

# Chronic obstructive pulmonary disease

Stephanie A Christenson, Benjamin M Smith, Mona Bafadhel, Nirupama Putcha



Chronic obstructive pulmonary disease (COPD) is a major cause of morbidity, mortality, and health-care use worldwide. COPD is caused by exposure to inhaled noxious particles, notably tobacco smoke and pollutants. However, the broad range of factors that increase the risk of development and progression of COPD throughout the life course are increasingly being recognised. Innovations in omics and imaging techniques have provided greater insight into disease pathobiology, which might result in advances in COPD prevention, diagnosis, and treatment. Although few novel treatments have been approved for COPD in the past 5 years, advances have been made in targeting existing therapies to specific subpopulations using new biomarker-based strategies. Additionally, COVID-19 has undeniably affected individuals with COPD, who are not only at higher risk for severe disease manifestations than healthy individuals but also negatively affected by interruptions in health-care delivery and social isolation. This Seminar reviews COPD with an emphasis on recent advances in epidemiology, pathophysiology, imaging, diagnosis, and treatment.

## Introduction

Chronic obstructive pulmonary disease (COPD) is a leading cause of death and disability worldwide. Although COPD is heterogeneous, defining features include persistent airflow obstruction and respiratory symptoms. COPD is caused by exposure to inhaled particulate matter, such as cigarette smoke and air pollutants, in combination with genetic, developmental, and social factors.<sup>1</sup> Chronic exposure to particulate matter affects much of the world's ageing population;<sup>2,3</sup> consequently, the projected increase in COPD prevalence is unsurprising.<sup>4</sup> Decreasing the burden of COPD will require better treatment strategies and public health and personalised efforts to limit exposures. Many individuals diagnosed with COPD in late adulthood begin having symptoms in midlife, which might progress for years before diagnosis.<sup>5,6</sup> A greater knowledge of early COPD symptoms has led to an improved awareness of the early-life factors contributing to risk of COPD. Although smoking cessation is crucial to COPD prevention, recognising the entire COPD exposome (ie, all the relevant exposures an individual has in their lifetime)<sup>7-9</sup> could be important in decreasing risk of COPD overall. Furthermore, implementing treatments early, before progression to severe irreversible disease, could minimise disability.

Contemporary COPD guidelines emphasise management of treatable traits, particularly dyspnoea and exacerbations, and comorbidities. The prevention of exacerbations, defined as a rapid increase in COPD symptoms outside of the normal day-to-day variation, is crucial because of their substantial contribution to detrimental outcomes.<sup>10</sup> By addressing treatable traits, rather than providing a standardised approach to a heterogeneous disease, clinicians and researchers aim to reduce COPD morbidity and mortality.

Current mechanistic concepts in COPD could provide new avenues for therapeutic development. Studies using modern genetic and omic techniques have advanced the mechanistic understanding of COPD subgroups. Imaging innovations have informed the association between lung structure and lung function. This progress has moved

the field closer to implementing a precision medicine approach to diagnosis and treatment.

In this Seminar, we summarise the current and evolving topics in COPD, with an emphasis on epidemiology, pathophysiology, imaging, diagnosis, and treatments. We also review the literature on COPD during the COVID-19 pandemic.

## Epidemiology, exposures, and disparities

In 2017, the number of people living with chronic respiratory disease was estimated to be 544.9 million, with approximately 55% of cases being attributed to COPD.<sup>11</sup> In 2019, COPD was the third leading cause of death globally.<sup>12</sup> Yet, the prevalence of COPD is expected to increase, partly due to an ageing population.<sup>4</sup>

COPD is commonly associated with tobacco smoking. In non-smokers, second-hand smoke, occupational exposures, air pollutants, and history of previous lung infections including tuberculosis have been identified as COPD risk factors.<sup>13,14</sup> In low-income and middle-income countries, fuel sources such as biomass and coal are common indoor air pollutants.<sup>14,15</sup> These exposures also probably contribute to and speed up COPD development among individuals who smoke,<sup>16</sup> and interact with host susceptibility factors,<sup>17,18</sup> ultimately resulting in COPD pathogenesis and progression.

The use of electronic nicotine device systems (ENDS; ie, vaping) is another potential increasing exposure risk,

Lancet 2022; 399: 2227-42

Published Online

May 6, 2022

[https://doi.org/10.1016/S0140-6736\(22\)00470-6](https://doi.org/10.1016/S0140-6736(22)00470-6)

Division of Pulmonary, Critical Care, Allergy, and Sleep Medicine, University of California San Francisco, San Francisco, CA, USA (S A Christenson MD);

Department of Medicine, Columbia University Medical Center, New York, NY, USA (B M Smith MD);

Department of Medicine, McGill University Health Centre, Montreal, QC, Canada (B M Smith);

School of Immunology and Microbial Sciences, Faculty of Life Sciences and Medicine,

King's College London, London, UK (Prof M Bafadhel PhD);

Department of Respiratory Medicine, Nuffield Department of Medicine, University of Oxford, Oxford, UK

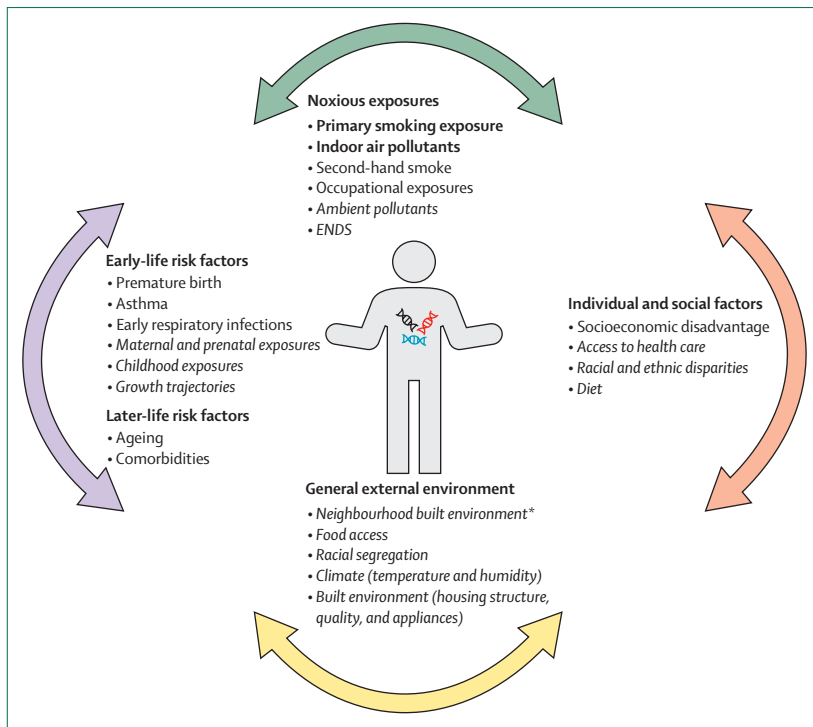
(Prof M Bafadhel); Division of Pulmonary and Critical Care Medicine, Johns Hopkins University School of Medicine, Baltimore, MD, USA (N Putcha MD)

Correspondence to:

Dr Nirupama Putcha, Division of Pulmonary and Critical Care Medicine, Johns Hopkins University School of Medicine, Baltimore, MD 21224, USA  
nputcha1@jhmi.edu

## Search strategy and selection criteria

We searched PubMed on chronic obstructive pulmonary disease (COPD) and related topics using the following terms: "COPD", "epidemiology", "exposures", "disparities", "exacerbations", "phenotyping", "genetics", "omics", "pathophysiology", "imaging", "treatment", "non-invasive ventilation", "pulmonary rehabilitation", "inhaler therapy", "BLVR", "COVID-19", and "SARS-CoV-2". We focused on works published in English and preferentially selected those published between Jan 1, 2018, and Jan 31, 2022.



**Figure 1: Risk factors for development, progression, and morbidity of COPD**

General categories for risk factors beyond genetic factors include early-life risk factors, later-life risk factors, noxious exposures, individual and social factors, and general external environment. Bold indicates highest level of evidence for risk factor, italics indicate that the risk factor is under investigation with smaller evidence base. COPD=chronic obstructive pulmonary disease. ENDS=electronic nicotine device systems. \*Neighbourhood built environment encompasses the structures, facilities, and make-up of the neighbourhood, including presence and types of business, greenspaces and recreation facilities, urbanity, cultural facilities, schools and educational institutions, and pollution.

particularly among adolescents and young adults.<sup>19,20</sup> Early cross-sectional studies and longitudinal analyses have shown that ENDS users have increased respiratory symptoms, incident airway disease, and lung function decline.<sup>21–23</sup> Furthermore, ENDS use has been associated with decreased smoking cessation,<sup>21</sup> and the dual use of cigarettes and ENDS might pose higher risks than those caused by the use of one of the two products alone.<sup>24</sup> Further studies that consider the rapidly changing constituents and delivery of ENDS products are needed to determine the risk of long-term use of ENDS with regard to the risk for developing COPD, and the harms and benefits of ENDS use for smoking cessation (figure 1).

Antenatal and early childhood exposures are also associated with COPD development.<sup>25,26</sup> Maternal smoking—the most studied early life exposure—leads to an increased risk for reduced lung function,<sup>25,27–29</sup> potentially by altering lung development. Such alteration could then heighten susceptibility to adverse effects from tobacco smoking throughout life (figure 1).<sup>30</sup>

Disparities by sex, country, race, and residence exist in COPD risk factors, incidence, and outcomes. Globally, 52–54% of cases of COPD among males and

19–24% of cases among females have been attributed to smoking, with large differences across countries.<sup>31</sup> Women might have higher susceptibility to development of and morbidity from COPD in response to exposures, and greater symptom burden than men.<sup>1,32–34</sup> Exposures leading to COPD development in non-smokers, such as cooking fuels and inefficient indoor ventilation, also disproportionately affect women.<sup>15</sup>

WHO estimates that 90% of COPD deaths are in low-income and middle-income countries.<sup>35</sup> This proportion might indicate the presence of disparities in extent and range of exposures, and access to health care compared with high-income countries.

Additionally, a study from the USA has shown racial disparities, with African Americans having greater risk of exacerbations and worse disease status than White individuals.<sup>36</sup> Individual-level and neighbourhood-level sociodemographic factors probably contribute to this disadvantage (figure 1).<sup>36,37</sup>

Rural residence also contributes to disparate COPD outcomes.<sup>38</sup> In the USA, death certificate data have shown increasing age-adjusted mortality from chronic lower respiratory disease in rural areas compared with metropolitan areas.<sup>39</sup> Similar disparities have also been identified in low-income and middle-income countries.<sup>40</sup> Distribution of exposures, availability of diagnostic testing, and access to health care might contribute to this disparity, which appears to be increasing.

The exposome is a contemporary holistic view of the environment that shapes COPD risk (figure 1).<sup>41</sup> Exposome models propose the contribution of exposures from multiple domains (eg, personal, social, neighbourhood, and environmental) to chronic disease risk.<sup>7–9,42,43</sup> Other than an association between childhood disadvantage factors (eg, parental history of asthma or smoking, and early respiratory infections) and COPD risk,<sup>44</sup> the contribution of social factors (eg, socioeconomic disadvantage and diet) and neighbourhood-level exposures (eg, climate and built environment) to COPD risk are understudied. Research is needed to identify the combinations of factors posing the greatest risks for disease development to inform prevention strategies locally and globally.

### Early COPD and trajectories of disease

COPD is often not diagnosed, and therapies not implemented, until symptoms are burdensome and the disease is pathologically advanced. Current research focuses on earlier timepoints to identify when and how exposure-induced damage could be halted or reversed before progression to advanced disease. COPD research usually studies older individuals (aged >60 years) in whom progression of mild disease is unlikely if it has not yet occurred. Early COPD refers to mild COPD manifestations in middle-aged individuals (approximately aged 35–55 years). These individuals are most at risk for developing clinically significant irreversible pathology.<sup>45</sup>

Studies have shown that airway obstruction and chronic respiratory symptoms before age 50 years are associated with COPD onset and progression.<sup>5,6,46–50</sup> For example, an increased prevalence of chronic mucous hypersecretion among smokers aged 36–43 years usually precedes the development of airflow obstruction.<sup>6</sup>

However, the timepoints crucial to COPD development might vary between individuals. The usual trajectory leading to COPD is accelerated decline of lung function from a normal function level, in response to noxious exposures during adulthood.<sup>51</sup> However, analyses have shown that only half of older adults (aged 50–65 years) with COPD have this trajectory. The other half do not attain normal maximal lung function by early adulthood and then decline at an age-appropriate rate to reach spirometrically-defined COPD.<sup>52</sup> These differing trajectories suggest that genetic risk, early life and prenatal exposures, and exposures in adulthood contribute to COPD pathogenesis to varying degrees in each individual.<sup>12,53–56</sup> COPD, however, is burdensome regardless of trajectory,<sup>57,58</sup> suggesting that assessment of the mechanisms leading to COPD requires examination across the lifespan (figure 1).

Mild disease in mid-to-late life (age 40–80 years) might be burdensome despite near-normal lung function. Indeed, COPD diagnosis based on partly reversible airway obstruction might be too conservative to capture all clinically relevant tobacco-related airway disease. In two large US observational studies, smokers with preserved lung function had several characteristics indicative of COPD.<sup>59–61</sup> Furthermore, in SPIROMICS, when smokers with preserved lung function were deeply phenotyped, over 80% had evidence of lung disease.<sup>62</sup> Accordingly, smoking might erode lung health before the persistent airflow limitation that defines COPD is established. A study is underway to determine whether treating smokers with symptoms but preserved lung function is beneficial.<sup>63</sup>

### Pathology: genetic and epigenetic risk

COPD pathogenesis is heterogeneous, with patients exhibiting airway disease, emphysema, inflammation, pathological mucus production, and vascular dysfunction to varying extents. Genetic risk has a crucial role in both COPD susceptibility and heterogeneity. An expanding list of genetic variants are associated with lung function, COPD, and aspects of the clinical presentation in genome-wide association studies (GWASs), including *HHIP* and *FAM13A*.<sup>64–66</sup>

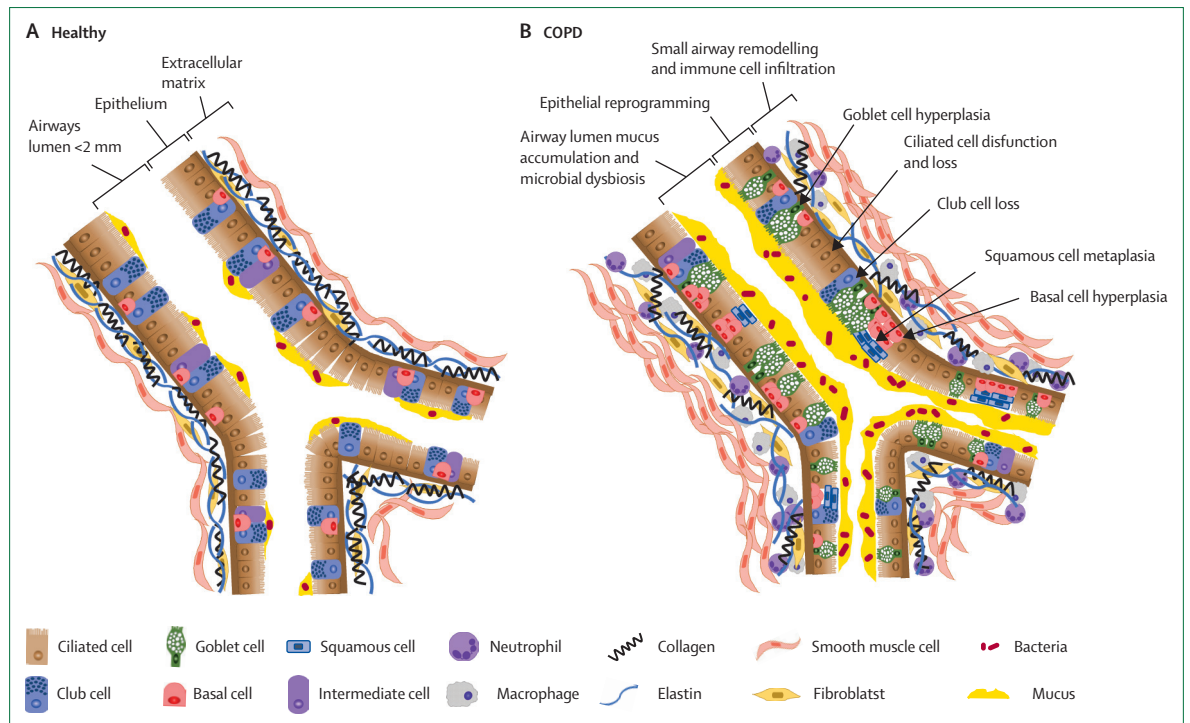
Although the heritability of lung function and COPD are estimated to be 38–50%, each genetic variant explains a small proportion of COPD risk.<sup>18,67,68</sup> In one of the largest lung function GWASs, the 279 variants identified accounted for at most 13·1% of lung function heritability.<sup>68</sup> Missing heritability is attributed to either common variants contributing small effects that miss GWASs significance thresholds or rare variants contributing to disease risk in a small portion of the population.<sup>69</sup> Research combines variants from GWASs

into genetic risk scores to predict larger proportions of COPD risk and heritability.<sup>17,70,71</sup> A recent polygenic risk score did not limit inclusion to significant GWASs variants, but included more than 2 million variants weighted on the basis of the full results of the largest lung function GWAS to date.<sup>17</sup> Individuals with the highest risk scores had a greatly increased risk of COPD, independent of smoking status. The score also correlated with emphysema and airway disease on CT imaging, and patterns of reduced lung growth in children with asthma. Genetic risk scores do not discriminate COPD cases and techniques that inherently incorporate both genetic and exposure-related risk (eg, CT imaging).<sup>70</sup> However, genetic scores could assist in disentangling the proportion of clinical, radiological, or biological findings due to genetics.

The contribution of rare genetic variants to COPD risk is another research area of interest. Rare variants are not captured in GWASs, but might have large effects on risk in a small proportion of the population.<sup>72</sup> For example, in SPIROMICS, rare variants in *SERPINA1* (ie, the gene causally linked to  $\alpha$ 1-antitrypsin deficiency) have cumulative effects on  $\alpha$ 1-antitrypsin concentrations, lung function, and emphysema in smokers.<sup>73</sup>

How exposures and genetic risk interact is an area of active research, and epigenetic mechanisms, including DNA methylation, might partly explain the interaction. Epigenetic alterations provide some of the earliest opportunities for exposures to silence or induce gene expression over the long term, and can accumulate over time in response to additional exposures. Smoking induces methylation in lung tissue and blood, probably contributing to xenobiotic metabolism, among other processes.<sup>74</sup> Methylation studies in COPD are scarce, and have only been conducted in small sample populations, but suggest diverse biological roles, including altered inflammatory and stress responses.<sup>75</sup> Epigenetic mechanisms might also partly explain the increased susceptibility of women to tobacco smoke. For example, methylation at *CYP1B1*, a gene involved in xenobiotic metabolism, in the buccal epithelium was correlated with lung function and radiographic emphysema in women but not men.<sup>76</sup> Importantly, differentially methylated sites in COPD are enriched adjacent to COPD-associated GWASs loci, suggesting that genetic regulation of gene expression in COPD might occur through DNA methylation.<sup>77</sup> These processes could partly explain why early life exposures contribute to COPD risk later in life.

Profiling of the transcriptome, metabolome, and proteome could aid in the understanding of lung-specific or systemic biology that contributes to COPD. Integrating these data with genetic data using methods such as gene expression quantitative trait locus analyses could provide a better understanding of how specific genetic variants contribute to COPD pathology. For example, alterations in lung gene expression that are regulated by lung function-associated genetic variants



**Figure 2: Small airways in a healthy individual (A) and small airway alterations in an individual with COPD (B)**

Small airways (<2 mm) depicted at the level of the terminal and transitional respiratory bronchioles. Part A shows the healthy small (<2 mm) airway epithelium, which is predominantly composed of ciliated, club, and basal cells, and cells intermediate between differentiated cell types. Part B shows how tobacco smoke and other inhalational exposures reprogramme the epithelium, stimulating basal cell hyperplasia and differentiation into squamous cells and mucus-producing goblet cells. Ciliated and club cell proportions decrease during this reprogramming, and the remaining ciliated cells are dysfunctional. Mucus might accumulate in the airway lumen in the setting of goblet cells hyperplasia and mucociliary defects, which, in parallel with smoking-induced immunosuppression, allow for microbial dysbiosis and inflammatory cell infiltration. Proteases produced by infiltrating immune cells contribute to extracellular matrix remodelling, in which elastins are reduced and collagen organisation is disordered. Not all components of the extracellular matrix are depicted. Adapted from Hogg and colleagues.<sup>79</sup> COPD=chronic obstructive pulmonary disease.

were found to be enriched in lung developmental pathways.<sup>78</sup> Although not ready for clinical practice, omic methods hold promise for explaining COPD pathobiology, identifying functions of causal genetic variants, and developing biomarkers that predict disease progression or outcomes.

### Pathological alterations: the airway epithelium, immune cells, and mesenchyme

The small (<2 mm) airways are an early site of alteration in COPD development (figure 2).<sup>79</sup> Small airway epithelium composition in healthy individuals provides an optimal environment for defence against pathogens and other inhaled insults.<sup>80</sup> The small airway epithelium is predominantly composed of secretory (club) cells, which synthesise and secrete products that line the small airway epithelium and aid in the innate immune response; ciliated cells, which aid in foreign material removal; and self-renewing basal cells, which replenish the major epithelial cell types after injury. Mucus-producing goblet cells that trap foreign materials are present to a lesser extent in the small airway epithelium than in the upper airway. Pulmonary neuroendocrine cells and ionocytes are

rare throughout the airways, and their functions are only partly understood.<sup>81,82</sup>

Inhaled exposures cause oxidant-induced injury leading to reprogramming of the basal cells that maintain the airway epithelium (figure 2). Reprogramming induces a shift in the small airway epithelium to more closely resemble the proximal airways, which are more exposed to irritants and microbes than the small airway epithelium and thus better equipped for defence against these factors.<sup>80</sup> Smoking-induced upregulation of epidermal growth factor and amphiregulin (ie, the ligands of the epidermal growth factor receptor) stimulates basal cell differentiation into squamous and goblet cells, respectively.<sup>83</sup> This transformation causes secretory and ciliated cell loss, and squamous and goblet cell metaplasia. The result is a new small airway epithelium micro-environment in which altered innate immune defences, pathological mucus secretion, and dysfunctional cilia contribute to the onset and progression of COPD. The epithelial reprogramming occurs in the absence of inflammation in most individuals who smoke, suggesting it occurs early in COPD pathogenesis.<sup>84</sup> However, advancing COPD stages are associated with increasing

small airway pathology, including mucous accumulation, immune cell infiltration, and airway wall thickening.<sup>85</sup> Epithelial reprogramming, in combination with immune and remodelling responses, probably culminates in this progressive response and contributes to the development of emphysema.

Imaging studies based on parametric response mapping (PRM) further suggest that small airway disease precedes emphysema. PRM, a voxel-based CT imaging technique, coregisters inspiratory and expiratory scans to distinguish regions of normal lung from functional small airways disease (fsad) and emphysema (emph). These are quantified as the relative volume of normal lungs compared with PRM-detected fsad (PRM<sup>fsad</sup>) and emph (PRM<sup>emph</sup>).<sup>86</sup> PRM<sup>fsad</sup> is associated with small airway epithelium pathology, including airway thickening and loss.<sup>87</sup> Conversely, PRM<sup>emph</sup>, which closely matches emphysema as defined in Hounsfield units, is associated with emphysema pathology, including decreased alveolar surface area and alveolar attachments. In the COPDGene study, disease progression for individuals with milder COPD was typified by increases in PRM<sup>fsad</sup>, whereas progression for individuals with advanced disease was typified by increases in PRM<sup>emph</sup>.<sup>88</sup>

Altered innate immune defences are a crucial contributor to COPD development and progression and are linked to epithelial reprogramming. Smoking-induced alterations to the small airway epithelium disturb epithelial barrier function and mucociliary clearance, leading to disruption of airway microbiome homeostasis (ie, dysbiosis).<sup>79</sup> Smoking stimulates an airway epithelium-specific immunosuppression that further contributes to dysbiosis and inflammatory cell infiltration. One mechanism for this immunosuppression is via a smoking-associated deficiency in intraluminal secretory IgA (sIgA), due to a loss of the polymeric immunoglobulin receptor that is required for the translocation of sIgA across the epithelium and into the lumen.<sup>89,90</sup> Intraluminal sIgA deficiency promotes bacterial invasion and macrophage and neutrophil accumulation.

Macrophages and neutrophils are crucial innate immune cells in COPD pathogenesis, implicated in chronic inflammation and emphysema development. Increased pathological macrophage concentrations in COPD are partly due to oxidant-induced resistance to apoptosis caused by smoking.<sup>91</sup> Despite an extended lifespan, COPD-associated macrophages exhibit defective phagocytosis of bacteria and apoptotic cells, leading to more inflammation to mitigate the reduced clearance. This defect might be caused by altered macrophage immunometabolism, including mitochondrial dysfunction and reduced compensatory glycolysis.<sup>92,93</sup> The matrix metalloproteinases (MMP), particularly MMP12 produced by macrophages, are the major proteinases implicated in emphysema; although, maybe to a lesser extent, neutrophil elastase and a disintegrin and metalloproteinase (known as ADAM) proteins also appear to contribute to the pathogenesis of

COPD.<sup>94,95</sup> Overall, the roles of innate immune cells in COPD are complex and not fully understood.

Although protease induced-tissue degradation is central to emphysema development, small airway epithelium remodelling occurs concurrently, leaving airways deficient in the elastin that contributes to elastic recoil but rich in disordered collagen (figure 2).<sup>96</sup> The extracellular matrix (ECM) that maintains the basement membrane is home to multiple mediators of profibrotic signalling, tissue degradation, and angiogenesis, all of which are altered in COPD, thus contributing to airway and vascular remodelling.<sup>97</sup> The remodelled ECM works with immune signalling to enhance protease-based destruction of ECM components. Together with endothelial cell death and loss of the microvasculature supporting lung architecture, protease-based tissue destruction eventually leads to emphysema when these processes occur at a faster rate than the increased maintenance and repair.<sup>97,98</sup>

Adaptive immune responses and shifts in the microbial environment are crucial but heterogeneous in COPD. Humoral immune responses seem particularly important in emphysema-predominant severe COPD, in which lymphoid follicles containing B cells are a major feature.<sup>99,100</sup> Cell-mediated adaptive immune responses can have contrasting contributions to COPD, steering inflammation towards one of four major polarised responses: type 1 (T1; interferon driven, generally considered a response to viruses); type 2 (T2; IL-4, IL-5, and IL-13 driven, a response to helminths or allergens); type 17 (T17; IL-17 and IL-22 driven, a response to extracellular bacteria); and T regulatory (regulatory T cell, anti-inflammatory). Markers of T17-driven inflammation in the airway are increased in association with emphysema, neutrophilic inflammation, and absence of response to inhaled corticosteroids (ICS).<sup>101,102</sup> T2-associated inflammation is probably a major component of the biology underlying the ill-defined asthma-COPD overlap entity.<sup>103</sup> Lung microbial community alterations might drive some of this heterogeneity in host inflammation.<sup>104</sup>

Genomic markers of T2 inflammation are associated with an increase in eosinophils (one of the main T2 effector cells) and a better ICS response.<sup>103</sup> The eosinophil count was the first blood biomarker added to the Global Initiative for Chronic Obstructive Lung Disease (GOLD) guidelines, on the basis of evidence showing that it aids in determining the role of ICS in symptomatic patients prone to exacerbations.<sup>1</sup> However, anti-IL-5 biologics did not meet primary endpoints in COPD trials.<sup>105,106</sup> A lower effectiveness in the sole treatment of eosinophilic inflammation in COPD might be due to overlapping inflammatory alterations or irreversible lung damage. The ageing lung could also be more difficult to treat because of competing pathological alterations, such as stem cell exhaustion (resulting in reduced regenerative capacity) and inflammageing (as indicated by a pro-inflammatory state).<sup>107-109</sup>

### Pathophysiology and phenotyping of exacerbations

COPD is often punctuated by periods of acute worsening, known as exacerbations. Exacerbations treated with systemic corticosteroids and antibiotic therapy are classified as moderate in the community setting, and severe in the hospital setting; yet, many unreported exacerbations go untreated.<sup>84,110</sup> Exacerbations are associated with substantial harm, including accelerated morbidity and mortality after severe and repeated events.<sup>10</sup>

Generally, the immunophysiological response during an exacerbation includes a reduction in forced expiratory volume in 1 s (FEV<sub>1</sub>), airway neutrophilia, and peripheral blood leukocytosis.<sup>111</sup> Frequently, the cause is a microbial pathogen. Viruses can be found in approximately 50% of patients with severe exacerbations and 25% of patients with moderate exacerbations,<sup>111,112</sup> and bacteria are often found in co-culture with other pathogens;<sup>113</sup> however, microbial causes are probably underestimated.

Exacerbations are heterogeneous. No clinical, physiological, radiological, or biological marker can predict exacerbation onset.<sup>114</sup> Until the early 2010s, the heterogeneity of COPD exacerbations was classified as infectious or non-infectious. Bafadhel and colleagues<sup>111</sup> examined airway and systemic inflammation in moderate exacerbations and identified four exacerbation clusters, also known as exacerbation endotypes, related to (1) high concentrations of airway TNF and IL-1 $\beta$  (pro-inflammatory exacerbation endotype); (2) high concentrations of airway CXCL10 (IP-10) and CXCL11 (IP-9; T1 inflammatory exacerbation endotype); (3) high concentrations of airway CCL17 and IL-5 (T2 inflammatory exacerbation endotype); and (4) low concentrations of measured airway inflammatory biomarkers (pauci-inflammatory exacerbation endotype). The first three endotypes were associated with the detection of bacteria, viruses, and eosinophilic inflammation, respectively. Microbiome profiling identified microbial community differences associated with each endotype, providing further insight into the interaction of infection and innate immune cells.<sup>115,116</sup> Clinical trials using blood eosinophils to direct systemic corticosteroid therapy for exacerbation treatment on the basis of endotype have been promising but require validation.<sup>117,118</sup>

At present, few treatment options at the time of exacerbation are available and have changed little in over four decades. Predicting who is most at risk for exacerbation is also difficult. Therapeutic guidelines suggest increased preventive management for patients having two or more exacerbations in a year, or for patients requiring admission to hospital.<sup>1</sup> The discovery of biological exacerbation endotypes and an increased understanding of the complex interplay between inflammation and the microbiome could lead to novel therapeutics targeting biological pathways for the management and prevention of exacerbations. Treatments targeted toward exacerbations are separately discussed in the Diagnosis and treatment section.

### Contributions of imaging to understanding COPD phenotypes and progression

Since the early roentgenographic descriptions of COPD in the mid-20th century,<sup>119,120</sup> imaging advances have contributed greatly to the understanding of COPD pathophysiology. Imaging methods such as CT and MRI permit in-vivo study of structure-function associations and are emerging as potential tools for individualised COPD management.<sup>121</sup>

In-vivo imaging has shown the variable extent of airway and airspace abnormalities in patients with COPD.<sup>122–124</sup> These observations support the long-standing hypothesis that COPD is a heterogeneous syndrome resulting from various pathologies with distinct causes, prognoses, and treatments (ie, endotypes).<sup>1</sup> Indeed, imaging studies of parenchymal and airway abnormalities associated with COPD show distinct associations with genetic loci, environmental exposures, and clinical manifestations (eg, exacerbations).<sup>70,123,125–127</sup>

Multi-resolution imaging of surgically isolated lungs showed 70% fewer terminal bronchioles in patients with COPD than in controls.<sup>128</sup> Moreover, the lower terminal bronchiole count and associated reduction in cross-sectional airway lumen area in lungs from patients with COPD were evident in regions without airspace enlargement, suggesting that airway loss might occur early in the disease.<sup>128</sup> Similar imaging techniques applied to lungs from non-smoking donors revealed an association between increasing age and a reduction in terminal bronchioles across the adult lifespan.<sup>129</sup> This association followed established age-related declines in lung function, supporting the mechanistic hypothesis of COPD as a disorder of accelerated ageing. Advances in functional imaging, such as PRM, have provided image-based biomarkers of small airway dysfunction to facilitate detection in vivo, opening avenues for early detection of small airway pathology and treatment.<sup>86,87,130</sup>

Imaging of general population samples has shed light on COPD risk factors beyond exposure to tobacco smoke. Dysanapsis, a mismatch of airway tree calibre relative to lung size, was initially inferred from the variation in maximal expiratory airflows among healthy adults and hypothesised to have a role in risk of obstructive lung disease.<sup>131,132</sup> Smaller than predicted airway tree calibre associated with dysanapsis has repeatedly been shown to be a major risk factor for COPD, at the same level as tobacco smoking and other risk factors (eg, second-hand smoke and air pollutants).<sup>131–133</sup> Moreover, adults who are heavy smokers who are free of spirometry-defined COPD exhibit airway tree calibres that are larger than predicted, suggesting that dysanapsis might help to explain heterogeneity of COPD susceptibility among individuals who smoke.<sup>132</sup> Understanding the biological basis of dysanapsis could lead to early life interventions to promote resilient lung health across the lifespan. Imaging lung structure can also serve as an intermediate outcome measure when

investigating the potential role of common exposures with small-to-moderate effect size that have potentially large population-attributable risk. Using this approach, higher concentrations of outdoor ozone, nitrogen oxides, and particulate matter less than 2.5  $\mu\text{m}$  were each associated with accelerated emphysema progression, as quantified by lung density on serial CT over 18 years of follow-up.<sup>134</sup> Such observations contribute to evidence that informs policy decisions related to air pollution and respiratory health.

Imaging has also advanced knowledge of comorbidities in COPD.<sup>1</sup> Cardiovascular disease is a common COPD comorbidity shown to affect outcomes.<sup>1</sup> In-vivo imaging has shown that decreased lung perfusion, increased vessel tapering, and altered large vessel and cardiac structure are evident even at early stages of COPD.<sup>135–139</sup> Ongoing studies might determine the contribution of these cardiovascular abnormalities to functional impairment and potential for therapeutic targeting.<sup>140–143</sup>

In the therapeutic context, the role of imaging as a tool for patient selection is expanding. For example, CT-assessed upper-lobe dominant emphysema is associated with survival benefit among patients undergoing lung volume reduction surgery,<sup>144</sup> among other factors, and is recommended for patient selection.<sup>1</sup> Bronchoscopic approaches to lung volume reduction have been developed, the success of which partly relies on the absence of collateral ventilation between lobes to facilitate atelectasis of the targeted lobe.<sup>145</sup> Clinical trials assessing bronchoscopic lung volume reduction have used imaging for patient selection (ie, identifying target lung regions and assessing fissure integrity as an indicator of collateral ventilation) and as an intermediate outcome (ie, assessing target lobe atelectasis).<sup>145–150</sup> Imaging-based intermediate outcome assessment has also been applied in the treatment of  $\alpha$ 1-antitrypsin deficiency. A clinical trial relied on CT-assessed lung density as the primary outcome to show that  $\alpha$ 1-antitrypsin slowed emphysema progression over 24 months.<sup>151</sup>

## Diagnosis and treatment

### Screening and diagnosis

Screening spirometry, although not universally recommended,<sup>152,153</sup> is appropriate among individuals with particular symptoms (eg, progressive dyspnoea, chronic cough or sputum production, recurrent pneumonia, or respiratory infections) or risk factors (eg, relevant exposures, genetic and family history, history of prematurity, or low birthweight).<sup>1,154,155</sup> Screening questionnaires to identify individuals needing spirometry have shown preliminary value<sup>156</sup> and are being tested more broadly in the primary care setting.<sup>157</sup> COPD diagnosis is made on the basis of the presence of risk factors, symptoms, and spirometry showing persistent airflow obstruction. GOLD recommends post-bronchodilator testing showing the ratio of FEV<sub>1</sub> to forced vital capacity be less than 70% to diagnose obstruction.<sup>1</sup>

### Panel: Pharmacological and non-pharmacological treatments for COPD, based on stable versus exacerbated state and setting of use

#### Stable COPD

##### Individualised non-pharmacological treatments

- Vaccinations (eg, influenza, pneumococcus, pertussis, SARS-CoV-2, and shingles)
- Smoking cessation counselling (which might include pharmacological aids)
- Pulmonary rehabilitation, exercise training, self-management, and disease education (eg, inhaler technique and adherence, breathing techniques, and written action plan)
- Long-term oxygen therapy
- Long-term non-invasive ventilation
- Surgical or bronchoscopic lung volume reduction
- Bullectomy
- Lung transplantation
- Screening for COPD-associated comorbid health conditions and diseases (eg, anxiety, depression, cardiovascular disease, lung cancer, and osteoporosis)
- Palliative care (eg, end-of-life planning)

##### Individualised pharmacotherapies

- $\beta_2$  agonists
- Anticholinergics
- Corticosteroids
- Antibiotic prophylaxis
- Phosphodiesterase-4 inhibitors
- Mucoregulators
- Methylxanthines
- $\alpha$ 1-antitrypsin augmentation therapy

#### Acute exacerbation of COPD

##### Individualised non-pharmacological treatments

- Oxygen
- Ventilation (eg, non-invasive positive pressure ventilation)

##### Individualised pharmacotherapies

- $\beta_2$  agonists
- Anticholinergics
- Corticosteroids
- Antibiotics

COPD=chronic obstructive pulmonary disease.

### Non-pharmacological interventions for COPD

Non-pharmacological treatments for COPD are a crucial part of the treatment plan (panel). Prevention strategies include vaccinations, smoking cessation, and avoidance of exposures.<sup>1</sup> Pulmonary rehabilitation is key for select individuals.<sup>158–160</sup> Supplemental oxygen and non-invasive ventilation are widely used adjunctive methods.<sup>161–163</sup> Lung volume reduction surgery is rarely pursued. However, bronchoscopic lung volume reduction<sup>145,164–166</sup> is a less invasive alternative than surgical lung volume reduction.

Pulmonary rehabilitation is particularly effective after exacerbations<sup>159</sup> and in individuals with exercise limitation.<sup>158</sup> However, barriers including programme scarcity and capacity limitations affect access to and implementation of pulmonary rehabilitation.<sup>160</sup> Patient-related factors including mobility, transportation access, social isolation, and cost are also barriers.<sup>160</sup> Medical literature on the use of virtual rehabilitation programmes is evolving, particularly as a method to reach sparsely populated areas.<sup>167,168</sup> Early telemedicine studies, bolstered by the COVID-19 pandemic, have been promising, showing feasibility and outcome improvement.<sup>169,170</sup> However, before widespread adoption, further studies, infrastructure development, and streamlined implementation of virtual programmes are needed.

Oxygen supplementation has long been indicated as a therapy for patients with COPD with severe resting hypoxaemia (oxygen saturation [ $\text{SpO}_2$ ]  $\leq 88\%$ ).<sup>171</sup> However, the 2016 LOTT trial suggested oxygen supplementation in moderate resting ( $\text{SpO}_2$ , 89–93%) and exertional hypoxaemia ( $\text{SpO}_2$ , 81–89%) might be less important than in severe resting hypoxaemia, because of absence of association with mortality, hospitalisations, and exacerbations.<sup>172</sup> Accordingly, American Thoracic Society clinical practice guidelines recommend against supplemental oxygen initiation for moderate resting hypoxaemia, but this recommendation is based on low-quality evidence.<sup>173</sup>

Non-invasive ventilation reduces intubation risk, length of hospital stay, and mortality in respiratory failure due to COPD exacerbations.<sup>174,175</sup> Consequently, non-invasive ventilation is recommended as the first line ventilatory support in this setting.<sup>1</sup> However, trials of non-invasive ventilation for severe resting hypercapnia in patients with chronic COPD have had mixed results. Some studies showed reduced mortality and hospital readmissions,<sup>162,163</sup> particularly in patients with resting hypercapnia and who have been admitted to hospital within the past 2–4 weeks for respiratory failure.<sup>163</sup> Other studies showed no clear benefit,<sup>161</sup> but differences in ventilatory strategy restrict the ability to draw definitive conclusions. Ultimately, chronic non-invasive ventilation might be beneficial in patient subgroups with suitable home care support.

Bronchoscopic lung volume reduction might be appropriate in a highly select patient subgroup, but benefits are largely limited to improvements in exercise capacity and symptoms.<sup>164</sup> Identifying the correct patients is crucial because of the relatively invasive nature of the bronchoscopic procedure and the moderate-to-high risk for adverse events such as pneumothorax. Considerations include presence of air trapping, continued exercise limitation after pulmonary rehabilitation, smoking cessation, emphysema heterogeneity, and collateral ventilation to the treated area.<sup>145,166</sup> Ultimately, palliative care and symptom management can be considered for patients with substantial disease burden and low quality of life despite available treatments.

### Pharmacotherapies for COPD

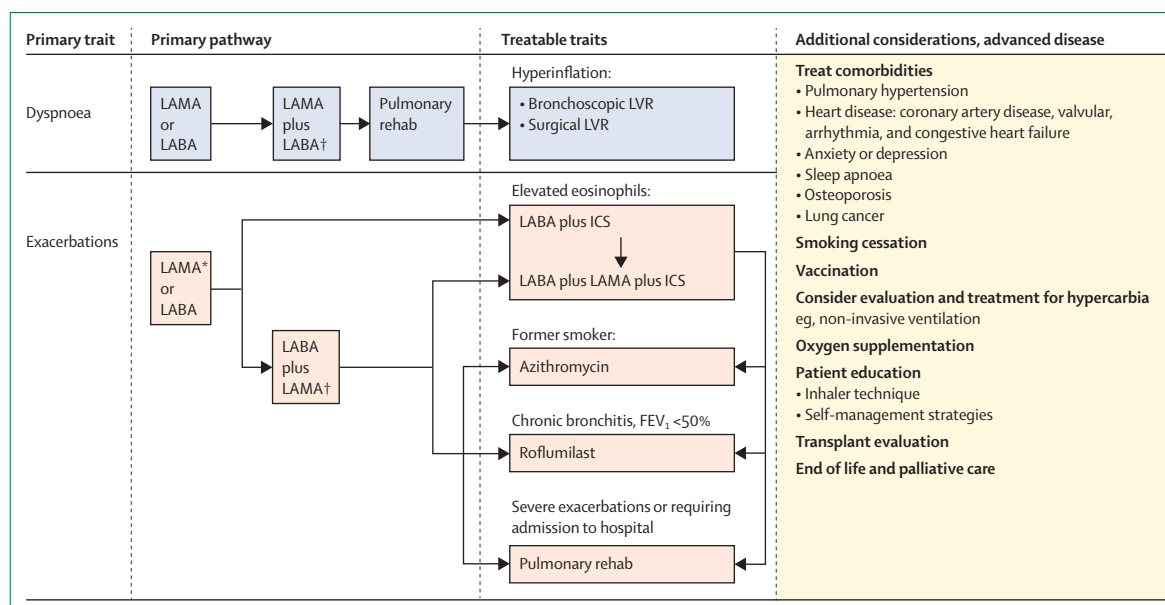
Since 2011, GOLD has used the symptom-based and exacerbation-based classification system using letters A, B, C, and D, which emphasises symptom scores and risk for exacerbations to determine long-term pharmacotherapy. Since 2019, follow-up treatment targeting exacerbations or dyspnoea has been considered separately from initial management (figure 3).<sup>176</sup> Although there is substantial overlap in strategies used in both pathways, we describe these pathways separately to better align with GOLD recommendations. Pathways targeting dyspnoea prioritise long-acting bronchodilators and de-emphasise ICS. Pathways targeting exacerbations draw on evolving literature<sup>118,177,178</sup> to suggest ICS initiation in individuals who frequently have exacerbations and have blood eosinophil counts of 300 cells per  $\mu\text{L}$  or greater ( $>100$  cells per  $\mu\text{L}$  if escalating treatment due to recent exacerbation).<sup>1</sup> The timing and frequency for assessing eosinophil counts to guide management are not clear. Although blood eosinophil measurements can be relatively stable over time in COPD,<sup>179–181</sup> studies show that variability increases with higher absolute counts.<sup>179,180</sup> Ultimately, studies are needed to better guide blood eosinophil targeted treatment in COPD and determine whether biomarkers that more accurately reflect eosinophilic inflammation in the lung could be developed.<sup>109</sup>

ICS withdrawal might be considered in patients with low risk for exacerbations or high risk for adverse outcomes (eg, pneumonia), but should be avoided in those with persistent elevations of eosinophil counts despite ICS.<sup>182–184</sup> Recent trials studied so-called triple therapy in patients with moderate-to-severe COPD, in which ICS, long-acting  $\beta_2$  agonists (LABAs), and long-acting muscarinic antagonists (LAMAs) are combined into a single inhaler, compared with ICS plus LABA or LABA plus LAMA combination therapies.<sup>185,186</sup> These studies have largely supported the GOLD approach to preventive management. Triple therapy is associated with exacerbation reduction, particularly in individuals with elevated eosinophil counts, and a moderate mortality benefit in secondary analyses. Triple therapy might prevent exacerbations even in patients with low eosinophil counts, but further studies are needed.

Other emerging pharmacotherapies in COPD include nebulised LAMAs,<sup>187,188</sup> a novel delivery mechanism for a mainstay of long-acting COPD treatment. Nebulisers might be useful in individuals with low peak inspiratory flow in whom medication delivery via some inhalers could be less efficient.<sup>189,190</sup> However, whether peak inspiratory flow-guided therapy choices affect delivery to the extent that clinical outcomes are improved is unclear.

GOLD guidelines also recommend screening for and treating other causes of dyspnoea. The prevalence of comorbidities among individuals with COPD is high,<sup>191–193</sup> including cardiovascular disease, depression, and





**Figure 3: Treatment pathways for COPD**

Pathways are based on primary trait, dyspnoea or exacerbations, including relevant treatable traits. Additional considerations that are important across all individuals with COPD are listed in the right column. COPD=chronic obstructive pulmonary disease. FEV<sub>1</sub>=forced expiratory volume in 1 s. ICS=inhaled corticosteroids.

LABA=long-acting  $\beta_2$  agonists. LAMA=long-acting muscarinic antagonists. LVR=lung volume reduction. \*LAMA is preferred initial therapy to LABA in exacerbation-prone COPD. †LAMA plus LABA therapy can be used as initial therapy in both dyspnoea and exacerbation pathways if severe dyspnoea is present.

anxiety. These comorbidities are associated with worse symptoms and exacerbations.<sup>194–197</sup>

### Treatment targeted at exacerbations

Pharmacological treatments for the prevention of exacerbations have largely targeted patients with at least two exacerbations in the past year (or at least one resulting in admission to hospital). Therapies of value beyond inhaled bronchodilators and ICS include azithromycin and roflumilast (figure 3).<sup>118,177,178</sup> Azithromycin is associated with reduction of exacerbations and improved quality of life;<sup>198</sup> subgroup analyses have shown higher efficacy among former smokers.<sup>199</sup> Roflumilast reduces exacerbations in individuals with chronic bronchitis symptoms and frequent exacerbations.<sup>200–202</sup> A meta-analysis of studies on vitamin D has prompted a recommendation for assessing vitamin D status (and providing supplementation if deficient) among individuals admitted to hospital for COPD exacerbations.<sup>203</sup>

Non-pharmacological treatments that are effective in preventing exacerbations include self-management programmes and pulmonary rehabilitation. Self-management programmes have been used for decades, often in association with pulmonary rehabilitation. Evidence for the incremental value of disease-specific educational interventions, including self-efficacy training and broader educational programmes for improved outcomes, is still unclear.<sup>204,205</sup>

### Palliative care

Palliative care strategies in COPD include treatments targeted at symptom control, both in the setting of

end-of-life care and in all patients with COPD. End-of-life palliative measures are probably underused in patients with COPD,<sup>206</sup> possibly because of challenges involved in establishing mortality risk.<sup>207</sup> Regardless, even among those patients not thought to be at the end of life, symptom-oriented treatments of debilitating symptoms, such as dyspnoea, have been studied. Some strategies showing promise include use of opiates,<sup>208</sup> fans,<sup>209</sup> and oxygen.<sup>210</sup>

### Impact of SARS-CoV-2 and the COVID-19 pandemic on COPD

The COVID-19 pandemic has had both direct and indirect effects on individuals with COPD, and the literature is evolving. Although the estimated prevalence of COPD among individuals infected with SARS-CoV-2 varies,<sup>211,212</sup> with a few exceptions,<sup>213,214</sup> most studies have shown heightened adverse effects of COVID-19 in individuals with COPD. These adverse effects include more frequent treatment in hospital, readmissions to hospital, admissions to intensive care units, necessity for mechanical ventilation, cardiovascular events, and higher mortality than among patients without COVID-19.<sup>212,215–225</sup> The mechanisms for such heightened adverse events are not clear. One possibility is related to the ACE2 receptor that binds SARS-CoV-2, which has been shown to be increased in the small airways of patients with COPD.<sup>226</sup> Individuals with COPD also appear to be at higher risk for inflammaging, a dysfunctional pro-inflammatory state associated with increasing age, which could provide a lung environment more prone to severe COVID-19 disease than in healthy individuals.<sup>227–229</sup>

Unlike other respiratory viruses, research has not suggested that SARS-CoV-2 is a major cause of COPD exacerbations. A recent meta-analysis of 13 studies showed that the proportion of patients admitted to hospital due to COPD exacerbations decreased by approximately 50% during the pandemic.<sup>230</sup> These numbers did not increase back to historical levels over time, whereas numbers for myocardial infarction did increase back to historical levels.<sup>231</sup> Hypothesised mechanisms for this decrease include reduction in exposure to respiratory viruses<sup>232–234</sup> that commonly trigger exacerbations due to social distancing<sup>235</sup> and enhanced respiratory precautions (eg, wearing face masks), or background ICS treatment.<sup>236</sup> Conversely, worse self-reported symptoms and lower physical capacity have been reported among individuals with COPD during the COVID-19 pandemic than before the pandemic.<sup>237</sup>

COVID-19 has also had indirect effects on individuals with COPD, who have been identified as a high risk group for COVID-19.<sup>238,239</sup> Concerns for increased social isolation, anxiety, and depression exist in this group,<sup>240</sup> in whom anxiety and depression are already common and linked to worse outcomes.<sup>241,242</sup> Other consequences include decreased access to in-person care.<sup>243</sup> Despite the negative impacts, the COVID-19 pandemic has resulted in the rapid adoption of digital health and innovation, enabling programmes such as virtual rehabilitation, which might ultimately improve overall COPD care.

### Future directions and conclusions

Although tobacco smoke is the greatest COPD risk factor, there is increasing awareness of the essential roles for genetics, early-life risk factors, and exposures incurred over the life course in COPD pathogenesis. Accordingly, more recognition is being given to the importance of identifying COPD at earlier stages, with the goal of preventing progression of disease and morbidity. Concurrently, as in many chronic diseases, precision medicine approaches hold promise for finding and targeting COPD characteristics amenable to specific treatments. Future studies are required to better understand both early COPD treatment and precision medicine in the context of existing treatment and prevention approaches.

#### Contributors

SAC and NP contributed to conception and design of the manuscript. All authors contributed to literature search, organisation of search results, and manuscript preparation. All authors reviewed the results and approved the final version of the manuscript.

#### Declaration of interests

SAC reports grant funding paid to her institution from the National Institutes of Health (NIH) and Merck; consulting fees paid from AstraZeneca, GlaxoSmithKline, and Glenmark Pharmaceuticals; payment and honoraria paid from AstraZeneca, Sanofi/Regeneron, Genentech, and Sunovion; and participation in advisory boards or Data and Safety Monitoring Boards (DSMBs) for AstraZeneca, GlaxoSmithKline, Sanofi/Regeneron, and Glenmark Pharmaceuticals. BMS reports grants paid to their institution from NIH, Canadian Institutes of Health Research, Canadian Lung Association, Quebec Respiratory Health Research Network, and McGill University Health Centre Foundation,

and leadership as director for the Centre for Outcomes and Research Evaluation of the McGill University Health Centre Research Institute. MB reports grants paid to their institution from AstraZeneca and Roche; consulting fees paid to their institution from AstraZeneca and GlaxoSmithKline; honoraria paid to their institution from AstraZeneca, Boehringer Ingelheim, and GlaxoSmithKline; and participation in advisory boards or DSMBs with fees paid to their institution from AstraZeneca and GlaxoSmithKline. NP reports research funding paid to their institution from NIH and CSL Behring, and participation in advisory boards for CSL Behring and Pharmacosmos.

#### Acknowledgments

We acknowledge the contribution of ideas to the epidemiology and exposome model of COPD from the Johns Hopkins BREATHE (Bridging Research, Lung Health, and the Environment) Center, including Michelle Eakin, Nadia Hansel, and Kirsten Koehler.

#### References

- GOLD. Global strategy for the diagnosis, management, and prevention of chronic obstructive pulmonary disease (2021 report). 2020. [https://goldcopd.org/wp-content/uploads/2020/11/GOLD-REPORT-2021-v1.1-25Nov20\\_WMV.pdf](https://goldcopd.org/wp-content/uploads/2020/11/GOLD-REPORT-2021-v1.1-25Nov20_WMV.pdf) (accessed March 15, 2021).
- WHO. Tobacco. 2021. <https://www.who.int/news-room/fact-sheets/detail/tobacco> (accessed Jan 16, 2021).
- WHO. Ambient (outdoor) air pollution. 2021. [https://www.who.int/news-room/fact-sheets/detail/ambient-\(outdoor\)-air-quality-and-health](https://www.who.int/news-room/fact-sheets/detail/ambient-(outdoor)-air-quality-and-health) (accessed Jan 15, 2021).
- Mathers CD, Loncar D. Projections of global mortality and burden of disease from 2002 to 2030. *PLoS Med* 2006; **3**: e442.
- Çolak Y, Afzal S, Nordestgaard BG, Lange P, Vestbo J. Importance of early COPD in young adults for development of clinical COPD: findings from the Copenhagen General Population Study. *Am J Respir Crit Care Med* 2021; **203**: 1245–56.
- Allinson JP, Hardy R, Donaldson GC, Shaheen SO, Kuh D, Wedzicha JA. The presence of chronic mucus hypersecretion across adult life in relation to chronic obstructive pulmonary disease development. *Am J Respir Crit Care Med* 2016; **193**: 662–72.
- Levy JI, Quirós-Alcalá L, Fabian MP, Basra K, Hansel NN. Established and emerging environmental contributors to disparities in asthma and chronic obstructive pulmonary disease. *Curr Epidemiol Rep* 2018; **5**: 114–24.
- Annesi-Maesano I, Maesano CN, Biagioni B, D'Amato G, Cecchi L. Call to action: air pollution, asthma, and allergy in the exposome era. *J Allergy Clin Immunol* 2021; **148**: 70–72.
- Juarez PD, Hood DB, Song MA, Ramesh A. Use of an exposome approach to understand the effects of exposures from the natural, built, and social environments on cardio-vascular disease onset, progression, and outcomes. *Front Public Health* 2020; **8**: 379.
- Suissa S, Dell'Aniello S, Ernst P. Long-term natural history of chronic obstructive pulmonary disease: severe exacerbations and mortality. *Thorax* 2012; **67**: 957–63.
- GBD Chronic Respiratory Disease Collaborators. Prevalence and attributable health burden of chronic respiratory diseases, 1990–2017: a systematic analysis for the Global Burden of Disease Study 2017. *Lancet Respir Med* 2020; **8**: 585–96.
- WHO. Global health estimates: leading causes of death. Cause-specific mortality 2000–2019. 2019. <https://www.who.int/data/gho/data/themes/mortality-and-global-health-estimates/ghe-leading-causes-of-death> (accessed Jan 30, 2021).
- Eisner MD, Anthonisen N, Coultas D, et al. An official American Thoracic Society public policy statement: novel risk factors and the global burden of chronic obstructive pulmonary disease. *Am J Respir Crit Care Med* 2010; **182**: 693–718.
- Salvi SS, Barnes PJ. Chronic obstructive pulmonary disease in non-smokers. *Lancet* 2009; **374**: 733–43.
- Sana A, Somda SMA, Meda N, Bouland C. Chronic obstructive pulmonary disease associated with biomass fuel use in women: a systematic review and meta-analysis. *BMJ Open Respir Res* 2018; **5**: e000246.
- Zheng XY, Li ZL, Li C, Guan WJ, Li LX, Xu YJ. Effects of cigarette smoking and biomass fuel on lung function and respiratory symptoms in middle-aged adults and the elderly in Guangdong province, China: a cross-sectional study. *Indoor Air* 2020; **30**: 860–71.

- 17 Moll M, Sakornsakolpat P, Shrine N, et al. Chronic obstructive pulmonary disease and related phenotypes: polygenic risk scores in population-based and case-control cohorts. *Lancet Respir Med* 2020; **8**: 696–708.
- 18 Zhou JJ, Cho MH, Castaldi PJ, Hersh CP, Silverman EK, Laird NM. Heritability of chronic obstructive pulmonary disease and related phenotypes in smokers. *Am J Respir Crit Care Med* 2013; **188**: 941–47.
- 19 Gottlieb MA. Regulation of e-cigarettes in the United States and its role in a youth epidemic. *Children (Basel)* 2019; **6**: 40.
- 20 Ali FRM, Diaz MC, Vallone D, et al. E-cigarette unit sales, by product and flavor type - United States, 2014–2020. *MMWR Morb Mortal Wkly Rep* 2020; **69**: 1313–18.
- 21 Bowler RP, Hansel NN, Jacobson S, et al. Electronic cigarette use in US adults at risk for or with COPD: analysis from two observational cohorts. *J Gen Intern Med* 2017; **32**: 1315–22.
- 22 Hedman L, Backman H, Stridsman C, et al. Association of electronic cigarette use with smoking habits, demographic factors, and respiratory symptoms. *JAMA Netw Open* 2018; **1**: e180789.
- 23 Bhatta DN, Glantz SA. Association of e-cigarette use with respiratory disease among adults: a longitudinal analysis. *Am J Prev Med* 2020; **58**: 182–90.
- 24 Wang JB, Olgin JE, Nah G, et al. Cigarette and e-cigarette dual use and risk of cardiopulmonary symptoms in the Health eHeart Study. *PLoS One* 2018; **13**: e0198681.
- 25 Rusconi F, Galassi C, Forastiere F, et al. Maternal complications and procedures in pregnancy and at birth and wheezing phenotypes in children. *Am J Respir Crit Care Med* 2007; **175**: 16–21.
- 26 Latzin P, Rössli M, Huss A, Kuehni CE, Frey U. Air pollution during pregnancy and lung function in newborns: a birth cohort study. *Eur Respir J* 2009; **33**: 594–603.
- 27 Stick SM, Burton PR, Gurrin L, Sly PD, LeSouëf PN. Effects of maternal smoking during pregnancy and a family history of asthma on respiratory function in newborn infants. *Lancet* 1996; **348**: 1060–64.
- 28 Li YF, Langholz B, Salam MT, Gilliland FD. Maternal and grandmaternal smoking patterns are associated with early childhood asthma. *Chest* 2005; **127**: 1232–41.
- 29 Postma DS, Bush A, van den Berge M. Risk factors and early origins of chronic obstructive pulmonary disease. *Lancet* 2015; **385**: 899–909.
- 30 Guerra S, Stern DA, Zhou M, et al. Combined effects of parental and active smoking on early lung function deficits: a prospective study from birth to age 26 years. *Thorax* 2013; **68**: 1021–28.
- 31 Ezzati M, Lopez AD. Estimates of global mortality attributable to smoking in 2000. *Lancet* 2003; **362**: 847–52.
- 32 Martinez FJ, Curtis JL, Sciruba F, et al. Sex differences in severe pulmonary emphysema. *Am J Respir Crit Care Med* 2007; **176**: 243–52.
- 33 Foreman MG, Zhang L, Murphy J, et al. Early-onset chronic obstructive pulmonary disease is associated with female sex, maternal factors, and African American race in the COPDGene Study. *Am J Respir Crit Care Med* 2011; **184**: 414–20.
- 34 Barnes PJ. Sex differences in chronic obstructive pulmonary disease mechanisms. *Am J Respir Crit Care Med* 2016; **193**: 813–14.
- 35 WHO. Chronic obstructive pulmonary disease (COPD). 2021. [https://www.who.int/news-room/fact-sheets/detail/chronic-obstructive-pulmonary-disease-\(copd\)](https://www.who.int/news-room/fact-sheets/detail/chronic-obstructive-pulmonary-disease-(copd)) (accessed July 7, 2021).
- 36 Ejike CO, Woo H, Galitsatos P, et al. Contribution of individual and neighborhood factors to racial disparities in respiratory outcomes. *Am J Respir Crit Care Med* 2021; **203**: 987–97.
- 37 Ejike CO, Dransfield MT, Hansel NN, et al. Chronic obstructive pulmonary disease in America's black population. *Am J Respir Crit Care Med* 2019; **200**: 423–30.
- 38 Raju S, Brigham EP, Paulin LM, et al. The burden of rural chronic obstructive pulmonary disease: analyses from the National Health and Nutrition Examination Survey. *Am J Respir Crit Care Med* 2019; **201**: 488–91.
- 39 Iyer AS, Cross SH, Dransfield MT, Warraich HJ. Urban-rural disparities in deaths from chronic lower respiratory disease in the United States. *Am J Respir Crit Care Med* 2021; **203**: 769–72.
- 40 Robertson NM, Nagourney EM, Pollard SL, et al. Urban-rural disparities in chronic obstructive pulmonary disease management and access in Uganda. *Chronic Obstr Pulm Dis* 2019; **6**: 17–28.
- 41 Vrijheid M. The exposome: a new paradigm to study the impact of environment on health. *Thorax* 2014; **69**: 876–78.
- 42 Guillien A, Lepeule J, Seyve E, et al. Profile of exposures and lung function in adults with asthma: an exposome approach in the EGEA study. *Environ Res* 2021; **196**: 110422.
- 43 Cecchi L, D'Amato G, Annesi-Maesano I. External exposome and allergic respiratory and skin diseases. *J Allergy Clin Immunol* 2018; **141**: 846–57.
- 44 Svanes C, Sunyer J, Plana E, et al. Early life origins of chronic obstructive pulmonary disease. *Thorax* 2010; **65**: 14–20.
- 45 Martinez FJ, Han MK, Allinson JP, et al. At the root: defining and halting progression of early chronic obstructive pulmonary disease. *Am J Respir Crit Care Med* 2018; **197**: 1540–51.
- 46 Kohansal R, Martinez-Cambor P, Agustí A, Buist AS, Mannino DM, Soriano JB. The natural history of chronic airflow obstruction revisited: an analysis of the Framingham offspring cohort. *Am J Respir Crit Care Med* 2009; **180**: 3–10.
- 47 Guerra S, Sherrill DL, Venker C, Ceccato CM, Halonen M, Martinez FD. Chronic bronchitis before age 50 years predicts incident airflow limitation and mortality risk. *Thorax* 2009; **64**: 894–900.
- 48 Çolak Y, Afzal S, Nordestgaard BG, Vestbo J, Lange P. Prevalence, characteristics, and prognosis of early chronic obstructive pulmonary disease. The Copenhagen General Population Study. *Am J Respir Crit Care Med* 2020; **201**: 671–80.
- 49 Kalhan R, Arynchyn A, Colangelo LA, Dransfield MT, Gerald LB, Smith LJ. Lung function in young adults predicts airflow obstruction 20 years later. *Am J Med* 2010; **123**: 468.e1–7.
- 50 de Marco R, Accordini S, Cerveri I, et al. Incidence of chronic obstructive pulmonary disease in a cohort of young adults according to the presence of chronic cough and phlegm. *Am J Respir Crit Care Med* 2007; **175**: 32–39.
- 51 Fletcher C, Peto R, Tinker C, Speizer FE. The natural history of chronic bronchitis and emphysema: an eight-year study of early chronic obstructive lung disease in working men in London. Oxford: Oxford University Press, 1976: 272.
- 52 Lange P, Celli B, Agustí A, et al. Lung-function trajectories leading to chronic obstructive pulmonary disease. *N Engl J Med* 2015; **373**: 111–22.
- 53 Bose S, Rosa MJ, Chiu YHM, et al. Prenatal nitrate air pollution exposure and reduced child lung function: timing and fetal sex effects. *Environ Res* 2018; **167**: 591–97.
- 54 Allinson JP, Hardy R, Donaldson GC, Shaheen SO, Kuh D, Wedzicha JA. Combined impact of smoking and early-life exposures on adult lung function trajectories. *Am J Respir Crit Care Med* 2017; **196**: 1021–30.
- 55 Bui DS, Lodge CJ, Burgess JA, et al. Childhood predictors of lung function trajectories and future COPD risk: a prospective cohort study from the first to the sixth decade of life. *Lancet Respir Med* 2018; **6**: 535–44.
- 56 Ross JC, Castaldi PJ, Cho MH, et al. Longitudinal modeling of lung function trajectories in smokers with and without chronic obstructive pulmonary disease. *Am J Respir Crit Care Med* 2018; **198**: 1033–42.
- 57 Marott JL, Ingebrigtsen TS, Çolak Y, Vestbo J, Lange P. Lung function trajectories leading to chronic obstructive pulmonary disease as predictors of exacerbations and mortality. *Am J Respir Crit Care Med* 2020; **202**: 210–18.
- 58 Agustí A, Noell G, Brugada J, Faner R. Lung function in early adulthood and health in later life: a transgenerational cohort analysis. *Lancet Respir Med* 2017; **5**: 935–45.
- 59 Woodruff PG, Barr RG, Bleecker E, et al. Clinical significance of symptoms in smokers with preserved pulmonary function. *N Engl J Med* 2016; **374**: 1811–21.
- 60 Regan EA, Lynch DA, Curran-Everett D, et al. Clinical and radiologic disease in smokers with normal spirometry. *JAMA Intern Med* 2015; **175**: 1539–49.
- 61 Garudadri S, Woodruff PG, Han MK, et al. Systemic markers of inflammation in smokers with symptoms despite preserved spirometry in SPIROMICS. *Chest* 2019; **155**: 908–17.
- 62 Oh AL, Mularski RA, Barjaktarevic I, et al. Defining resilience to smoking-related lung disease: a modified Delphi approach from SPIROMICS. *Ann Am Thorac Soc* 2021; **18**: 1822–31.
- 63 Han MK, Ye W, Kim DY, Woodruff P, Pulmonary Trials Cooperative Investigators. Design of the Redefining Therapy in Early COPD study. *Chronic Obstr Pulm Dis* 2020; **7**: 382–89.

- 64 Hancock DB, Eijgelsheim M, Wilk JB, et al. Meta-analyses of genome-wide association studies identify multiple loci associated with pulmonary function. *Nat Genet* 2010; **42**: 45–52.
- 65 Cho MH, Boutaoui N, Klanderman BJ, et al. Variants in *FAM13A* are associated with chronic obstructive pulmonary disease. *Nat Genet* 2010; **42**: 200–02.
- 66 Hobbs BD, de Jong K, Lamontagne M, et al. Genetic loci associated with chronic obstructive pulmonary disease overlap with loci for lung function and pulmonary fibrosis. *Nat Genet* 2017; **49**: 426–32.
- 67 Palmer LJ, Knuijan MW, Divitini ML, et al. Familial aggregation and heritability of adult lung function: results from the Busselton Health Study. *Eur Respir J* 2001; **17**: 696–702.
- 68 Shrine N, Guyatt AL, Erzurumluoglu AM, et al. New genetic signals for lung function highlight pathways and chronic obstructive pulmonary disease associations across multiple ancestries. *Nat Genet* 2019; **51**: 481–93.
- 69 Gibson G. Hints of hidden heritability in GWAS. *Nat Genet* 2010; **42**: 558–60.
- 70 Oelsner EC, Ortega VE, Smith BM, et al. A genetic risk score associated with chronic obstructive pulmonary disease susceptibility and lung structure on computed tomography. *Am J Respir Crit Care Med* 2019; **200**: 721–31.
- 71 Wain LV, Shrine N, Artigas MS, et al. Genome-wide association analyses for lung function and chronic obstructive pulmonary disease identify new loci and potential druggable targets. *Nat Genet* 2017; **49**: 416–25.
- 72 Bossé Y, Lamontagne M, Gaudreault N, et al. Early-onset emphysema in a large French-Canadian family: a genetic investigation. *Lancet Respir Med* 2019; **7**: 427–36.
- 73 Ortega VE, Li X, O'Neal WK, et al. The effects of rare *SERPINA1* variants on lung function and emphysema in SPIROMICS. *Am J Respir Crit Care Med* 2020; **201**: 540–54.
- 74 Stueve TR, Li WQ, Shi J, et al. Epigenome-wide analysis of DNA methylation in lung tissue shows concordance with blood studies and identifies tobacco smoke-inducible enhancers. *Hum Mol Genet* 2017; **26**: 3014–27.
- 75 Qiu W, Baccarelli A, Carey VJ, et al. Variable DNA methylation is associated with chronic obstructive pulmonary disease and lung function. *Am J Respir Crit Care Med* 2012; **185**: 373–81.
- 76 Koo HK, Morrow J, Kachroo P, et al. Sex-specific associations with DNA methylation in lung tissue demonstrate smoking interactions. *Epigenetics* 2021; **16**: 692–703.
- 77 Morrow JD, Glass K, Cho MH, et al. Human lung DNA methylation quantitative trait loci colocalize with chronic obstructive pulmonary disease genome-wide association loci. *Am J Respir Crit Care Med* 2018; **197**: 1275–84.
- 78 Obeidat M, Hao K, Bossé Y, et al. Molecular mechanisms underlying variations in lung function: a systems genetics analysis. *Lancet Respir Med* 2015; **3**: 782–95.
- 79 Hogg JC, Paré PD, Hackett TL. The contribution of small airway obstruction to the pathogenesis of chronic obstructive pulmonary disease. *Physiol Rev* 2017; **97**: 529–52.
- 80 Yang J, Zuo WL, Fukui T, et al. Smoking-dependent distal-to-proximal repatterning of the adult human small airway epithelium. *Am J Respir Crit Care Med* 2017; **196**: 340–52.
- 81 Plasschaert LW, Žilionis R, Choo-Wing R, et al. A single-cell atlas of the airway epithelium reveals the CFTR-rich pulmonary ionocyte. *Nature* 2018; **560**: 377–81.
- 82 Branchfield K, Nantie L, Verheyden JM, Sui P, Wienhold MD, Sun X. Pulmonary neuroendocrine cells function as airway sensors to control lung immune response. *Science* 2016; **351**: 707–10.
- 83 Zuo WL, Yang J, Gomi K, Chao I, Crystal RG, Shaykhi R. EGF-amphiregulin interplay in airway stem/progenitor cells links the pathogenesis of smoking-induced lesions in the human airway epithelium. *Stem Cells* 2017; **35**: 824–37.
- 84 Crystal RG. Airway basal cells. The “smoking gun” of chronic obstructive pulmonary disease. *Am J Respir Crit Care Med* 2014; **190**: 1355–62.
- 85 Hogg JC, Chu F, Utokaparch S, et al. The nature of small-airway obstruction in chronic obstructive pulmonary disease. *N Engl J Med* 2004; **350**: 2645–53.
- 86 Galbán CJ, Han MK, Boes JL, et al. Computed tomography-based biomarker provides unique signature for diagnosis of COPD phenotypes and disease progression. *Nat Med* 2012; **18**: 1711–15.
- 87 Vasilescu DM, Martinez FJ, Marchetti N, et al. Noninvasive imaging biomarker identifies small airway damage in severe chronic obstructive pulmonary disease. *Am J Respir Crit Care Med* 2019; **200**: 575–81.
- 88 Labaki WW, Gu T, Murray S, et al. Voxel-wise longitudinal parametric response mapping analysis of chest computed tomography in smokers. *Acad Radiol* 2019; **26**: 217–23.
- 89 Richmond BW, Mansouri S, Serezani A, et al. Monocyte-derived dendritic cells link localized secretory IgA deficiency to adaptive immune activation in COPD. *Mucosal Immunol* 2021; **14**: 431–42.
- 90 Polosukhin VV, Richmond BW, Du RH, et al. Secretory IgA deficiency in individual small airways is associated with persistent inflammation and remodeling. *Am J Respir Crit Care Med* 2017; **195**: 1010–21.
- 91 Ravi AK, Plumb J, Gaskell R, et al. COPD monocytes demonstrate impaired migratory ability. *Respir Res* 2017; **18**: 90.
- 92 O'Beirne SL, Kikkers SA, Oromendia C, et al. Alveolar macrophage immunometabolism and lung function impairment in smoking and chronic obstructive pulmonary disease. *Am J Respir Crit Care Med* 2020; **201**: 735–39.
- 93 Belchamber KBR, Singh R, Batista CM, et al. Defective bacterial phagocytosis is associated with dysfunctional mitochondria in COPD macrophages. *Eur Respir J* 2019; **54**: 1802244.
- 94 Gharib SA, Manicone AM, Parks WC. Matrix metalloproteinases in emphysema. *Matrix Biol* 2018; **73**: 34–51.
- 95 Polverino F, Rojas-Quintero J, Wang X, et al. A disintegrin and metalloproteinase domain-8: a novel protective proteinase in chronic obstructive pulmonary disease. *Am J Respir Crit Care Med* 2018; **198**: 1254–67.
- 96 Burgstaller G, Oehrle B, Gerckens M, White ES, Schiller HB, Eickelberg O. The instructive extracellular matrix of the lung: basic composition and alterations in chronic lung disease. *Eur Respir J* 2017; **50**: 1601805.
- 97 Åhrman E, Hallgren O, Malmström L, et al. Quantitative proteomic characterization of the lung extracellular matrix in chronic obstructive pulmonary disease and idiopathic pulmonary fibrosis. *J Proteomics* 2018; **189**: 23–33.
- 98 Strulovici-Barel Y, Staudt MR, Krause A, et al. Persistence of circulating endothelial microparticles in COPD despite smoking cessation. *Thorax* 2016; **71**: 1137–44.
- 99 Seys LJM, Verhamme FM, Schinwald A, et al. Role of B cell-activating factor in chronic obstructive pulmonary disease. *Am J Respir Crit Care Med* 2015; **192**: 706–18.
- 100 Faner R, Cruz T, Casserras T, et al. Network analysis of lung transcriptomics reveals a distinct B-cell signature in emphysema. *Am J Respir Crit Care Med* 2016; **193**: 1242–53.
- 101 Christenson SA, van den Berge M, Faiz A, et al. An airway epithelial IL-17A response signature identifies a steroid-unresponsive COPD patient subgroup. *J Clin Invest* 2019; **129**: 169–81.
- 102 Roos AB, Sandén C, Mori M, Bjermer L, Stampfli MR, Erjefält JS. IL-17A is elevated in end-stage chronic obstructive pulmonary disease and contributes to cigarette smoke-induced lymphoid neogenesis. *Am J Respir Crit Care Med* 2015; **191**: 1232–41.
- 103 Christenson SA, Steiling K, van den Berge M, et al. Asthma-COPD overlap. Clinical relevance of genomic signatures of type 2 inflammation in chronic obstructive pulmonary disease. *Am J Respir Crit Care Med* 2015; **191**: 758–66.
- 104 Opron K, Begley LA, Erb-Downward JR, et al. Lung microbiota associations with clinical features of COPD in the SPIROMICS cohort. *NPJ Biofilms Microbiomes* 2021; **7**: 14.
- 105 Criner GJ, Celli BR, Brightling CE, et al. Benralizumab for the prevention of COPD exacerbations. *N Engl J Med* 2019; **381**: 1023–34.
- 106 Pavord ID, Chanez P, Criner GJ, et al. Mepolizumab for eosinophilic chronic obstructive pulmonary disease. *N Engl J Med* 2017; **377**: 1613–29.
- 107 Ghosh M, Miller YE, Nakachi I, et al. Exhaustion of airway basal progenitor cells in early and established chronic obstructive pulmonary disease. *Am J Respir Crit Care Med* 2018; **197**: 885–96.
- 108 Franceschi C, Garagnani P, Parini P, Giuliani C, Santoro A. Inflammaging: a new immune-metabolic viewpoint for age-related diseases. *Nat Rev Endocrinol* 2018; **14**: 576–90.
- 109 Hastie AT, Martinez FJ, Curtis JL, et al. Association of sputum and blood eosinophil concentrations with clinical measures of COPD severity: an analysis of the SPIROMICS cohort. *Lancet Respir Med* 2017; **5**: 956–67.

- 110 Seemungal TA, Donaldson GC, Paul EA, Bestall JC, Jeffries DJ, Wedzicha JA. Effect of exacerbation on quality of life in patients with chronic obstructive pulmonary disease. *Am J Respir Crit Care Med* 1998; **157**: 1418–22.
- 111 Bafadhel M, McKenna S, Terry S, et al. Acute exacerbations of chronic obstructive pulmonary disease: identification of biologic clusters and their biomarkers. *Am J Respir Crit Care Med* 2011; **184**: 662–71.
- 112 Papi A, Bellettato CM, Braccioni F, et al. Infections and airway inflammation in chronic obstructive pulmonary disease severe exacerbations. *Am J Respir Crit Care Med* 2006; **173**: 1114–21.
- 113 Haldar K, Bafadhel M, Lau K, et al. Microbiome balance in sputum determined by PCR stratifies COPD exacerbations and shows potential for selective use of antibiotics. *PLoS One* 2017; **12**: e0182833.
- 114 Hurst JR, Donaldson GC, Perera WR, et al. Use of plasma biomarkers at exacerbation of chronic obstructive pulmonary disease. *Am J Respir Crit Care Med* 2006; **174**: 867–74.
- 115 Wang Z, Bafadhel M, Haldar K, et al. Lung microbiome dynamics in COPD exacerbations. *Eur Respir J* 2016; **47**: 1082–92.
- 116 Wang Z, Locantore N, Haldar K, et al. Inflammatory endotype-associated airway microbiome in chronic obstructive pulmonary disease clinical stability and exacerbations: a multicohort longitudinal analysis. *Am J Respir Crit Care Med* 2021; **203**: 1488–502.
- 117 Sivapalan P, Lapperre TS, Janner J, et al. Eosinophil-guided corticosteroid therapy in patients admitted to hospital with COPD exacerbation (CORTICO-COP): a multicentre, randomised, controlled, open-label, non-inferiority trial. *Lancet Respir Med* 2019; **7**: 699–709.
- 118 Bafadhel M, McKenna S, Terry S, et al. Blood eosinophils to direct corticosteroid treatment of exacerbations of chronic obstructive pulmonary disease: a randomized placebo-controlled trial. *Am J Respir Crit Care Med* 2012; **186**: 48–55.
- 119 Burrows B, Fletcher CM, Heard BE, Jones NL, Wootliff JS. The emphysematous and bronchial types of chronic airways obstruction. A clinicopathological study of patients in London and Chicago. *Lancet* 1966; **1**: 830–35.
- 120 Burrows B, Niden AH, Fletcher CM, Jones NL. Clinical types of chronic obstructive lung disease in London and in Chicago. A study of one hundred patients. *Am Rev Respir Dis* 1964; **90**: 14–27.
- 121 Washko GR, Parraga G. COPD biomarkers and phenotypes: opportunities for better outcomes with precision imaging. *Eur Respir J* 2018; **52**: 1801570.
- 122 Haghghi B, Choi S, Choi J, et al. Imaging-based clusters in former smokers of the COPD cohort associate with clinical characteristics: the subpopulations and intermediate outcome measures in COPD study (SPIROMICS). *Respir Res* 2019; **20**: 153.
- 123 Zou C, Li F, Choi J, et al. Longitudinal imaging-based clusters in former smokers of the COPD cohort associate with clinical characteristics: the subpopulations and intermediate outcome measures in COPD study (SPIROMICS). *Int J Chron Obstruct Pulmon Dis* 2021; **16**: 1477–96.
- 124 Haghghi B, Choi S, Choi J, et al. Imaging-based clusters in current smokers of the COPD cohort associate with clinical characteristics: the subpopulations and intermediate outcome measures in COPD study (SPIROMICS). *Respir Res* 2018; **19**: 178.
- 125 Billatos E, Ash SY, Duan F, et al. Distinguishing smoking-related lung disease phenotypes via imaging and molecular features. *Chest* 2021; **159**: 549–63.
- 126 Halper-Stromberg E, Cho MH, Wilson C, et al. Visual assessment of chest computed tomographic images is independently useful for genetic association analysis in studies of chronic obstructive pulmonary disease. *Ann Am Thorac Soc* 2017; **14**: 33–40.
- 127 Cho MH, Castaldi PJ, Hersh CP, et al. A genome-wide association study of emphysema and airway quantitative imaging phenotypes. *Am J Respir Crit Care Med* 2015; **192**: 559–69.
- 128 McDonough JE, Yuan R, Suzuki M, et al. Small-airway obstruction and emphysema in chronic obstructive pulmonary disease. *N Engl J Med* 2011; **365**: 1567–75.
- 129 Verleden SE, Kirby M, Everaerts S, et al. Small airway loss in the physiologically ageing lung: a cross-sectional study in unused donor lungs. *Lancet Respir Med* 2021; **9**: 167–74.
- 130 Kirby M, Tanabe N, Vasilescu DM, et al. Computed tomography total airway count is associated with the number of micro-computed tomography terminal bronchioles. *Am J Respir Crit Care Med* 2020; **201**: 613–15.
- 131 Sheel AW, Guenette JA, Yuan R, et al. Evidence for dysanapsis using computed tomographic imaging of the airways in older ex-smokers. *J Appl Physiol (1985)* 2009; **107**: 1622–28.
- 132 Smith BM, Kirby M, Hoffman EA, et al. Association of dysanapsis with chronic obstructive pulmonary disease among older adults. *JAMA* 2020; **323**: 2268–80.
- 133 Vameghestahbanati M, Kirby M, Tanabe N, et al. Central airway tree dysanapsis extends to the peripheral airways. *Am J Respir Crit Care Med* 2021; **203**: 378–81.
- 134 Wang M, Aaron CP, Madrigano J, et al. Association between long-term exposure to ambient air pollution and change in quantitatively assessed emphysema and lung function. *JAMA* 2019; **322**: 546–56.
- 135 Hueper K, Vogel-Claussen J, Parikh MA, et al. Pulmonary microvascular blood flow in mild chronic obstructive pulmonary disease and emphysema. The MESA COPD study. *Am J Respir Crit Care Med* 2015; **192**: 570–80.
- 136 Pistenmaa CL, Nardelli P, Ash SY, et al. Pulmonary arterial pruning and longitudinal change in percent emphysema and lung function: the genetic epidemiology of COPD study. *Chest* 2021; **160**: 470–480.
- 137 Barr RG, Bluemke DA, Ahmed FS, et al. Percent emphysema, airflow obstruction, and impaired left ventricular filling. *N Engl J Med* 2010; **362**: 217–27.
- 138 Barker AL, Eddy RL, MacNeil JL, McCormack DG, Kirby M, Parraga G. CT pulmonary vessels and MRI ventilation in chronic obstructive pulmonary disease: relationship with worsening FEV<sub>1</sub> in the TINCan cohort study. *Acad Radiol* 2021; **28**: 495–506.
- 139 Wells JM, Washko GR, Han MK, et al. Pulmonary arterial enlargement and acute exacerbations of COPD. *N Engl J Med* 2012; **367**: 913–21.
- 140 Hohlfeld JM, Vogel-Claussen J, Biller H, et al. Effect of lung deflation with indacaterol plus glycopyrronium on ventricular filling in patients with hyperinflation and COPD (CLAIM): a double-blind, randomised, crossover, placebo-controlled, single-centre trial. *Lancet Respir Med* 2018; **6**: 368–78.
- 141 Vogel-Claussen J, Schönfeld CO, Kaireit TF, et al. Effect of indacaterol/glycopyrronium on pulmonary perfusion and ventilation in hyperinflated patients with chronic obstructive pulmonary disease (CLAIM). A double-blind, randomized, crossover trial. *Am J Respir Crit Care Med* 2019; **199**: 1086–96.
- 142 Kovacs G, Agusti A, Barberà JA, et al. Pulmonary vascular involvement in chronic obstructive pulmonary disease. Is there a pulmonary vascular phenotype? *Am J Respir Crit Care Med* 2018; **198**: 1000–11.
- 143 Iyer KS, Newell JD Jr, Jin D, et al. Quantitative dual-energy computed tomography supports a vascular etiology of smoking-induced inflammatory lung disease. *Am J Respir Crit Care Med* 2016; **193**: 652–61.
- 144 Fishman A, Martinez F, Naunheim K, et al. A randomized trial comparing lung-volume-reduction surgery with medical therapy for severe emphysema. *N Engl J Med* 2003; **348**: 2059–73.
- 145 Criner GJ, Sue R, Wright S, et al. A multicenter randomized controlled trial of Zephyr Endobronchial Valve treatment in heterogeneous emphysema (LIBERATE). *Am J Respir Crit Care Med* 2018; **198**: 1151–64.
- 146 Davey C, Zoumot Z, Jordan S, et al. Bronchoscopic lung volume reduction with endobronchial valves for patients with heterogeneous emphysema and intact interlobar fissures (the BeLieVeR-HIFI study): a randomised controlled trial. *Lancet* 2015; **386**: 1066–73.
- 147 Deslée G, Mal H, Dutau H, et al. Lung volume reduction coil treatment vs usual care in patients with severe emphysema: the REVOLENS randomized clinical trial. *JAMA* 2016; **315**: 175–84.
- 148 Li S, Wang G, Wang C, et al. The REACH trial: a randomized controlled trial assessing the safety and effectiveness of the Spiration(R) Valve System in the treatment of severe emphysema. *Respiration* 2019; **97**: 416–27.
- 149 Sciruba FC, Ernst A, Herth FJF, et al. A randomized study of endobronchial valves for advanced emphysema. *N Engl J Med* 2010; **363**: 1233–44.

- 150 Shah PL, Zoumot Z, Singh S, et al. Endobronchial coils for the treatment of severe emphysema with hyperinflation (RESET): a randomised controlled trial. *Lancet Respir Med* 2013; **1**: 233–40.
- 151 Chapman KR, Burdon JGW, Piitulainen E, et al. Intravenous augmentation treatment and lung density in severe  $\alpha$ 1 antitrypsin deficiency (RAPID): a randomised, double-blind, placebo-controlled trial. *Lancet* 2015; **386**: 360–68.
- 152 Siu AL, Bibbins-Domingo K, Grossman DC, et al. Screening for chronic obstructive pulmonary disease: US Preventive Services Task Force recommendation statement. *JAMA* 2016; **315**: 1372–77.
- 153 Qaseem A, Wilt TJ, Weinberger SE, et al. Diagnosis and management of stable chronic obstructive pulmonary disease: a clinical practice guideline update from the American College of Physicians, American College of Chest Physicians, American Thoracic Society, and European Respiratory Society. *Ann Intern Med* 2011; **155**: 179–91.
- 154 Hill K, Goldstein RS, Guyatt GH, et al. Prevalence and underdiagnosis of chronic obstructive pulmonary disease among patients at risk in primary care. *CMAJ* 2010; **182**: 673–78.
- 155 López Varela MV, Montes de Oca M, Rey A, Casas A, Stirbulov R, Di Boscio V. Development of a simple screening tool for opportunistic COPD case finding in primary care in Latin America: the PUMA study. *Respirology* 2016; **21**: 1227–34.
- 156 Martinez FJ, Mannino D, Leidy NK, et al. A new approach for identifying patients with undiagnosed chronic obstructive pulmonary disease. *Am J Respir Crit Care Med* 2017; **195**: 748–56.
- 157 Yawn BP, Han M, Make BM, et al. Protocol summary of the COPD Assessment in Primary care To identify Undiagnosed Respiratory disease and Exacerbation risk (CAPTURE) validation in primary care study. *Chronic Obstr Pulm Dis* 2021; **8**: 60–75.
- 158 McCarthy B, Casey D, Devane D, Murphy K, Murphy E, Lacasse Y. Pulmonary rehabilitation for chronic obstructive pulmonary disease. *Cochrane Database Syst Rev* 2015; **2**: CD003793.
- 159 Puhan MA, Gimeno-Santos E, Cates CJ, Troosters T. Pulmonary rehabilitation following exacerbations of chronic obstructive pulmonary disease. *Cochrane Database Syst Rev* 2016; **12**: CD005305.
- 160 Rochester CL, Vogiatzis I, Holland AE, et al. An official American Thoracic Society/European Respiratory Society policy statement: enhancing implementation, use, and delivery of pulmonary rehabilitation. *Am J Respir Crit Care Med* 2015; **192**: 1373–86.
- 161 Struik FM, Sprooten RTM, Kerstjens HAM, et al. Nocturnal non-invasive ventilation in COPD patients with prolonged hypercapnia after ventilatory support for acute respiratory failure: a randomised, controlled, parallel-group study. *Thorax* 2014; **69**: 826–34.
- 162 Köhlein T, Windisch W, Köhler D, et al. Non-invasive positive pressure ventilation for the treatment of severe stable chronic obstructive pulmonary disease: a prospective, multicentre, randomised, controlled clinical trial. *Lancet Respir Med* 2014; **2**: 698–705.
- 163 Murphy PB, Rehal S, Arbane G, et al. Effect of home noninvasive ventilation with oxygen therapy vs oxygen therapy alone on hospital readmission or death after an acute COPD exacerbation: a randomized clinical trial. *JAMA* 2017; **317**: 2177–86.
- 164 Iftikhar IH, Schimmel M, Sardi A, Mehta I, Gonzalez E, Musani AI. Bronchoscopic lung volume reduction with valves and coils. A network meta-analysis. *Ann Am Thorac Soc* 2020; **17**: 1468–75.
- 165 van Agteren JE, Hnin K, Grosser D, Carson KV, Smith BJ. Bronchoscopic lung volume reduction procedures for chronic obstructive pulmonary disease. *Cochrane Database Syst Rev* 2017; **2**: CD012158.
- 166 Criner GJ, Delage A, Voelker K, et al. Improving lung function in severe heterogeneous emphysema with the spiration valve system (EMPROVE). A multicenter, open-label randomized controlled clinical trial. *Am J Respir Crit Care Med* 2019; **200**: 1354–62.
- 167 Moscovice IS, Casey MM, Wu Z. Disparities in geographic access to hospital outpatient pulmonary rehabilitation programs in the United States. *Chest* 2019; **156**: 308–15.
- 168 Selzler AM, Wald J, Sedeno M, et al. Telehealth pulmonary rehabilitation: a review of the literature and an example of a nationwide initiative to improve the accessibility of pulmonary rehabilitation. *Chronic Respir Dis* 2018; **15**: 41–47.
- 169 Holland AE, Hill CJ, Rochford P, Fiore J, Berlowitz DJ, McDonald CF. Telerehabilitation for people with chronic obstructive pulmonary disease: feasibility of a simple, real time model of supervised exercise training. *J Telemed Telecare* 2013; **19**: 222–26.
- 170 Bhatt SP, Patel SB, Anderson EM, et al. Video telehealth pulmonary rehabilitation intervention in chronic obstructive pulmonary disease reduces 30-day readmissions. *Am J Respir Crit Care Med* 2019; **200**: 511–13.
- 171 Nocturnal Oxygen Therapy Trial Group. Continuous or nocturnal oxygen therapy in hypoxemic chronic obstructive lung disease: a clinical trial. *Ann Intern Med* 1980; **93**: 391–98.
- 172 Albert RK, Au DH, Blackford AL, et al. A randomized trial of long-term oxygen for COPD with moderate desaturation. *N Engl J Med* 2016; **375**: 1617–27.
- 173 Jacobs SS, Krishnan JA, Lederer DJ, et al. Home oxygen therapy for adults with chronic lung disease. An official American Thoracic Society clinical practice guideline. *Am J Respir Crit Care Med* 2020; **202**: e121–41.
- 174 Kramer N, Meyer TJ, Meharg J, Cece RD, Hill NS. Randomized, prospective trial of noninvasive positive pressure ventilation in acute respiratory failure. *Am J Respir Crit Care Med* 1995; **151**: 1799–806.
- 175 Plant PK, Owen JL, Elliott MW. Early use of non-invasive ventilation for acute exacerbations of chronic obstructive pulmonary disease on general respiratory wards: a multicentre randomised controlled trial. *Lancet* 2000; **355**: 1931–35.
- 176 GOLD. Global strategy for the diagnosis, management, and prevention of chronic obstructive pulmonary disease (2019 report). 2018. <https://goldcopd.org/wp-content/uploads/2018/11/GOLD-2019-v1.7-FINAL-14Nov2018-WMS.pdf> (accessed March 8, 2021).
- 177 Suissa S, Dell’Aniello S, Ernst P. Comparative effectiveness of LABA-ICS versus LAMA as initial treatment in COPD targeted by blood eosinophils: a population-based cohort study. *Lancet Respir Med* 2018; **6**: 855–62.
- 178 Pascoe S, Locantore N, Dransfield MT, Barnes NC, Pavord ID. Blood eosinophil counts, exacerbations, and response to the addition of inhaled fluticasone furoate to vilanterol in patients with chronic obstructive pulmonary disease: a secondary analysis of data from two parallel randomised controlled trials. *Lancet Respir Med* 2015; **3**: 435–42.
- 179 Southworth T, Beech G, Foden P, Kolsum U, Singh D. The reproducibility of COPD blood eosinophil counts. *Eur Respir J* 2018; **52**: 1800427.
- 180 Oshagbemi OA, Burden AM, Braeken DCW, et al. Stability of blood eosinophils in patients with chronic obstructive pulmonary disease and in control subjects, and the impact of sex, age, smoking, and baseline counts. *Am J Respir Crit Care Med* 2017; **195**: 1402–04.
- 181 Landis SH, Suruki R, Hilton E, Compton C, Galwey NW. Stability of blood eosinophil count in patients with COPD in the UK Clinical Practice Research Datalink. *COPD* 2017; **14**: 382–88.
- 182 Chapman KR, Hurst JR, Frent SM, et al. Long-term triple therapy de-escalation to indacaterol/glycopyrronium in patients with chronic obstructive pulmonary disease (SUNSET): a randomized, double-blind, triple-dummy clinical trial. *Am J Respir Crit Care Med* 2018; **198**: 329–39.
- 183 Chalmers JD, Laska IF, Franssen FME, et al. Withdrawal of inhaled corticosteroids in COPD: a European Respiratory Society guideline. *Eur Respir J* 2020; **55**: 2000351.
- 184 Watz H, Tetzlaff K, Wouters EFM, et al. Blood eosinophil count and exacerbations in severe chronic obstructive pulmonary disease after withdrawal of inhaled corticosteroids: a post-hoc analysis of the WISDOM trial. *Lancet Respir Med* 2016; **4**: 390–98.
- 185 Lipson DA, Barnhart F, Brealey N, et al. Once-daily single-inhaler triple versus dual therapy in patients with COPD. *N Engl J Med* 2018; **378**: 1671–80.
- 186 Rabe KF, Martinez FJ, Ferguson GT, et al. Triple inhaled therapy at two glucocorticoid doses in moderate-to-very-severe COPD. *N Engl J Med* 2020; **383**: 35–48.
- 187 Ohar J, Tosiello R, Goodin T, Sanjar S. Efficacy and safety of a novel, nebulized glycopyrrolate for the treatment of COPD: effect of baseline disease severity and age; pooled analysis of GOLDEN 3 and GOLDEN 4. *Int J Chron Obstruct Pulmon Dis* 2019; **14**: 27–37.
- 188 Siler TM, Moran EJ, Barnes CN, Crater GD. Safety and efficacy of revefenacin and formoterol in sequence and combination via a standard jet nebulizer in patients with chronic obstructive pulmonary disease: a phase 3b, randomized, 42-day study. *Chronic Obstr Pulm Dis* 2020; **7**: 99–106.

- 189 Ghosh S, Ohar JA, Drummond MB. Peak inspiratory flow rate in chronic obstructive pulmonary disease: implications for dry powder inhalers. *J Aerosol Med Pulm Drug Deliv* 2017; **30**: 381–87.
- 190 Mahler DA, Waterman LA, Gifford AH. Prevalence and COPD phenotype for a suboptimal peak inspiratory flow rate against the simulated resistance of the Diskus® dry powder inhaler. *J Aerosol Med Pulm Drug Deliv* 2013; **26**: 174–79.
- 191 Frei A, Muggensturm P, Putcha N, et al. Five comorbidities reflected the health status in patients with chronic obstructive pulmonary disease: the newly developed COMCOLD index. *J Clin Epidemiol* 2014; **67**: 904–11.
- 192 Putcha N, Han MK, Martinez CH, et al. Comorbidities of COPD have a major impact on clinical outcomes, particularly in African Americans. *Chronic Obstr Pulm Dis* 2014; **1**: 105–14.
- 193 Vanfleteren LEGW, Spruit MA, Groenen M, et al. Clusters of comorbidities based on validated objective measurements and systemic inflammation in patients with chronic obstructive pulmonary disease. *Am J Respir Crit Care Med* 2013; **187**: 728–35.
- 194 Kunisaki KM, Dransfield MT, Anderson JA, et al. Exacerbations of chronic obstructive pulmonary disease and cardiac events. A post hoc cohort analysis from the SUMMIT randomized clinical trial. *Am J Respir Crit Care Med* 2018; **198**: 51–57.
- 195 Wang M, Lin EP, Huang LC, Li CY, Shyr Y, Lai CH. Mortality of cardiovascular events in patients with COPD and preceding hospitalization for acute exacerbation. *Chest* 2020; **158**: 973–85.
- 196 Eisner MD, Blanc PD, Yelin EH, et al. Influence of anxiety on health outcomes in COPD. *Thorax* 2010; **65**: 229–34.
- 197 Hanania NA, Müllerova H, Locantore NW, et al. Determinants of depression in the ECLIPSE chronic obstructive pulmonary disease cohort. *Am J Respir Crit Care Med* 2011; **183**: 604–11.
- 198 Albert RK, Connett J, Bailey WC, et al. Azithromycin for prevention of exacerbations of COPD. *N Engl J Med* 2011; **365**: 689–98.
- 199 Han MK, Tayob N, Murray S, et al. Predictors of chronic obstructive pulmonary disease exacerbation reduction in response to daily azithromycin therapy. *Am J Respir Crit Care Med* 2014; **189**: 1503–08.
- 200 Martinez FJ, Calverley PMA, Goehring U-M, Brose M, Fabbri LM, Rabe KF. Effect of roflumilast on exacerbations in patients with severe chronic obstructive pulmonary disease uncontrolled by combination therapy (REACT): a multicentre randomised controlled trial. *Lancet* 2015; **385**: 857–66.
- 201 Martinez FJ, Rabe KF, Sethi S, et al. Effect of roflumilast and inhaled corticosteroid/long-acting  $\beta_2$ -agonist on chronic obstructive pulmonary disease exacerbations (RE(2)SPOND). A randomized clinical trial. *Am J Respir Crit Care Med* 2016; **194**: 559–67.
- 202 Rabe KF, Calverley PMA, Martinez FJ, Fabbri LM. Effect of roflumilast in patients with severe COPD and a history of hospitalisation. *Eur Respir J* 2017; **50**: 1700158.
- 203 Jolliffe DA, Greenberg L, Hooper RL, et al. Vitamin D to prevent exacerbations of COPD: systematic review and meta-analysis of individual participant data from randomised controlled trials. *Thorax* 2019; **74**: 337–45.
- 204 Blackstock FC, Webster KE, McDonald CF, Hill CJ. Comparable improvements achieved in chronic obstructive pulmonary disease through pulmonary rehabilitation with and without a structured educational intervention: a randomized controlled trial. *Respirology* 2014; **19**: 193–202.
- 205 Selzler AM, Jourdain T, Wald J, et al. Evaluation of an enhanced pulmonary rehabilitation program: a randomized controlled trial. *Ann Am Thorac Soc* 2021; **18**: 1650–60.
- 206 Au DH, Udris EM, Fihn SD, McDonnell MB, Curtis JR. Differences in health care utilization at the end of life among patients with chronic obstructive pulmonary disease and patients with lung cancer. *Arch Intern Med* 2006; **166**: 326–31.
- 207 Patel K, Janssen DJA, Curtis JR. Advance care planning in COPD. *Respirology* 2012; **17**: 72–78.
- 208 Verberkt CA, van den Beuken-van Everdingen MHJ, Schols JMGA, Hameleers N, Wouters EFM, Janssen DJA. Effect of sustained-release morphine for refractory breathlessness in chronic obstructive pulmonary disease on health status: a randomized clinical trial. *JAMA Intern Med* 2020; **180**: 1306–14.
- 209 Marchetti N, Lammi MR, Travaline JM, Ciccolella D, Civic B, Criner GJ. Air current applied to the face improves exercise performance in patients with COPD. *Lung* 2015; **193**: 725–31.
- 210 Uronis HE, Ekström MP, Currow DC, McCrory DC, Samsa GP, Abernethy AP. Oxygen for relief of dyspnoea in people with chronic obstructive pulmonary disease who would not qualify for home oxygen: a systematic review and meta-analysis. *Thorax* 2015; **70**: 492–94.
- 211 Garg S, Kim L, Whitaker M, et al. Hospitalization rates and characteristics of patients hospitalized with laboratory-confirmed coronavirus disease 2019 — COVID-NET, 14 states, March 1–30, 2020. *MMWR Morb Mortal Wkly Rep* 2020; **69**: 458–64.
- 212 Lacedonia D, Scioscia G, Santomasi C, et al. Impact of smoking, COPD and comorbidities on the mortality of COVID-19 patients. *Sci Rep* 2021; **11**: 19251.
- 213 Kim Y, An TJ, Park YB, et al. Chronic obstructive pulmonary disease is not associated with a poor prognosis in COVID-19. *Tuberc Respir Dis (Seoul)* 2022; **85**: 74–79.
- 214 Jung Y, Wee JH, Kim J-H, Choi HG. The effects of previous asthma and COPD on the susceptibility to and severity of COVID-19: a nationwide cohort study in South Korea. *J Clin Med* 2021; **10**: 4626.
- 215 Alqahtani JS, Oyelade T, Aldhahir AM, et al. Prevalence, severity and mortality associated with COPD and smoking in patients with COVID-19: a rapid systematic review and meta-analysis. *PLoS One* 2020; **15**: e0233147.
- 216 Guan WJ, Liang WH, Zhao Y, et al. Comorbidity and its impact on 1590 patients with COVID-19 in China: a nationwide analysis. *Eur Respir J* 2020; **55**: 2000547.
- 217 Lippi G, Henry BM. Chronic obstructive pulmonary disease is associated with severe coronavirus disease 2019 (COVID-19). *Respir Med* 2020; **167**: 105941.
- 218 Bravi F, Flacco ME, Carradori T, et al. Predictors of severe or lethal COVID-19, including Angiotensin Converting Enzyme inhibitors and Angiotensin II Receptor Blockers, in a sample of infected Italian citizens. *PLoS One* 2020; **15**: e0235248.
- 219 Aveyard P, Gao M, Lindson N, et al. Association between pre-existing respiratory disease and its treatment, and severe COVID-19: a population cohort study. *Lancet Respir Med* 2021; **9**: 909–23.
- 220 Signes-Costa J, Núñez-Gil IJ, Soriano JB, et al. Prevalence and 30-day mortality in hospitalized patients with Covid-19 and prior lung diseases. *Arch Bronconeumol* 2021; **57**: 13–20.
- 221 Puebla Neira DA, Watts A, Seashore J, et al. Outcomes of patients with COPD hospitalized for coronavirus disease 2019. *Chronic Obstr Pulm Dis* 2021; **8**: 517–27.
- 222 Meza D, Khuder B, Bailey JI, Rosenberg SR, Kalhan R, Reyfman PA. Mortality from COVID-19 in patients with COPD: a US study in the N3C Data Enclave. *Int J Chron Obstruct Pulmon Dis* 2021; **16**: 2323–26.
- 223 Huang BZ, Chen Z, Sidell MA, et al. Asthma disease status, COPD, and COVID-19 severity in a large multiethnic population. *J Allergy Clin Immunol Pract* 2021; **9**: 3621–28.
- 224 Sheikh D, Tripathi N, Chandler TR, et al. Clinical outcomes in patients with COPD hospitalized with SARS-CoV-2 versus non-SARS-CoV-2 community-acquired pneumonia. *Respir Med* 2022; **191**: 106714.
- 225 Karlsson Sundbaum J, Vanfleteren LEGW, Konradsen JR, Nyberg F, Ekberg-Jansson A, Stridsman C. Severe COVID-19 among patients with asthma and COPD: a report from the Swedish National Airway Register. *Ther Adv Respir Dis* 2021; **15**: 17534666211049738.
- 226 Leung JM, Yang CX, Tam A, et al. ACE-2 expression in the small airway epithelia of smokers and COPD patients: implications for COVID-19. *Eur Respir J* 2020; **55**: 2000688.
- 227 Schneider JL, Rowe JH, Garcia-de-Alba C, Kim CF, Sharpe AH, Haigis MC. The aging lung: physiology, disease, and immunity. *Cell* 2021; **184**: 1990–2019.
- 228 Schulte-Schrepping J, Reusch N, Paclik D, et al. Severe COVID-19 is marked by a dysregulated myeloid cell compartment. *Cell* 2020; **182**: 1419–40.
- 229 Zheng Y, Liu X, Le W, et al. A human circulating immune cell landscape in aging and COVID-19. *Protein Cell* 2020; **11**: 740–70.
- 230 Alqahtani JS, Oyelade T, Aldhahir AM, et al. Reduction in hospitalised COPD exacerbations during COVID-19: a systematic review and meta-analysis. *PLoS One* 2021; **16**: e0255659.
- 231 Blecker S, Jones SA, Petrilli CM, et al. Hospitalizations for chronic disease and acute conditions in the time of COVID-19. *JAMA Intern Med* 2021; **181**: 269–71.

- 232 Tan JY, Conceicao EP, Wee LE, Sim XY, Venkatachalam I. COVID-19 public health measures: a reduction in hospital admissions for COPD exacerbations. *Thorax* 2021; **76**: 512–13.
- 233 Huh K, Kim YE, Ji W, et al. Decrease in hospital admissions for respiratory diseases during the COVID-19 pandemic: a nationwide claims study. *Thorax* 2021; **76**: 939–41.
- 234 Chan KPF, Ma TF, Kwok WC, et al. Significant reduction in hospital admissions for acute exacerbation of chronic obstructive pulmonary disease in Hong Kong during coronavirus disease 2019 pandemic. *Respir Med* 2020; **171**: 106085.
- 235 Saeed MI, Sivapalan P, Eklöf J, et al. Social distancing in relation to severe exacerbations of COPD—a nationwide semi-experimental study during the COVID-19 pandemic. *Am J Epidemiol* 2022; published online Jan 5. <https://doi.org/10.1093/aje/kwab292>.
- 236 Ramakrishnan S, Nicolau DV Jr, Langford B, et al. Inhaled budesonide in the treatment of early COVID-19 (STOIC): a phase 2, open-label, randomised controlled trial. *Lancet Resp Med* 2021; **9**: 763–72.
- 237 Kahnert K, Lutter JI, Welte T, et al. Impact of the COVID-19 pandemic on the behaviour and health status of patients with COPD: results from the German COPD cohort COSYCONET. *ERJ Open Res* 2021; **7**: 00242-2021.
- 238 WHO. Coronavirus disease (COVID-19) pandemic. 2020. <https://www.who.int/emergencies/diseases/novel-coronavirus-2019/> (accessed May 10, 2021).
- 239 CDC. People with certain medical conditions. 2020. <https://www.cdc.gov/coronavirus/2019-ncov/need-extra-precautions/people-with-medical-conditions.html> (accessed June 25, 2021).
- 240 Latham S, Sullivan J, Williams S, Eakin MN. Maintaining emotional well-being during the COVID-19 pandemic: a resource for your patients. *Chronic Obstr Pulm Dis* 2020; **7**: 76–78.
- 241 Iyer AS, Bhatt SP, Garner JJ, et al. Depression is associated with readmission for acute exacerbation of chronic obstructive pulmonary disease. *Ann Am Thorac Soc* 2016; **13**: 197–203.
- 242 Atlantis E, Fahey P, Cochrane B, Smith S. Bidirectional associations between clinically relevant depression or anxiety and COPD: a systematic review and meta-analysis. *Chest* 2013; **144**: 766–77.
- 243 Spitzer KA, Stefan MS, Priya A, et al. Participation in pulmonary rehabilitation after hospitalization for chronic obstructive pulmonary disease among Medicare beneficiaries. *Ann Am Thorac Soc* 2019; **16**: 99–106.

Copyright © 2022 Elsevier Ltd. All rights reserved.