

ANESTHESIOLOGY

Perioperative Pulmonary Atelectasis: Part I. Biology and Mechanisms

Congli Zeng, M.D., Ph.D., David Lagier, M.D., Ph.D., Jae-Woo Lee, M.D., Marcos F. Vidal Melo, M.D., Ph.D.

ANESTHESIOLOGY 2022; 136:181–205

The term *atelectasis* derives from the Greek words *atelez*, which means “imperfect,” and *ektasis*, which means “expansion.” Pulmonary atelectasis thus refers to the incomplete expansion of alveoli and terminal bronchioles. In its paradigmatic form, atelectasis is represented by complete deaeration of lung units. Atelectasis is pervasive in anesthesia practice, and already in 1963, Bendixen *et al.*¹ demonstrated that general anesthesia with mechanical ventilation resulted in deterioration of intraoperative oxygenation and compliance in patients with normal preoperative lung function. Brismar *et al.*² subsequently demonstrated that such deterioration was associated with pulmonary densities revealed by computed tomography. In addition to physiologic impairment, pulmonary atelectasis could contribute to perioperative lung injury.³ The clinical presentation of significant atelectasis in surgical patients is variable from no sequelae to prolonged oxygen requirement to hypoxemia requiring endotracheal intubation and ventilation to even acute respiratory distress syndrome (ARDS). This article focuses on the perioperative period and aims to review the etiology of pulmonary atelectasis and provide a pathophysiologic discussion including biologic as well as biomechanical processes.

Physiologic Principles of Bronchiolar and Alveolar Expansion

Bronchioles and alveoli walls are composed of cells and extracellular matrix and covered by a liquid film on their luminal side containing surfactant. Each of these elements are exposed to expanding and collapsing forces.

Stresses Acting on Bronchioles and Alveolar Walls

Normal stress is the force per unit of area (A) perpendicular to the surface where the force is exerted. Three main

ABSTRACT

Pulmonary atelectasis is common in the perioperative period. Physiologically, it is produced when collapsing forces derived from positive pleural pressure and surface tension overcome expanding forces from alveolar pressure and parenchymal tethering. Atelectasis impairs blood oxygenation and reduces lung compliance. It is increasingly recognized that it can also induce local tissue biologic responses, such as inflammation, local immune dysfunction, and damage of the alveolar–capillary barrier, with potential loss of lung fluid clearance, increased lung protein permeability, and susceptibility to infection, factors that can initiate or exaggerate lung injury. Mechanical ventilation of a heterogeneously aerated lung (*e.g.*, in the presence of atelectatic lung tissue) involves biomechanical processes that may precipitate further lung damage: concentration of mechanical forces, propagation of gas–liquid interfaces, and remote overdistension. Knowledge of such pathophysiologic mechanisms of atelectasis and their consequences in the healthy and diseased lung should guide optimal clinical management.

(*ANESTHESIOLOGY* 2022; 136:181–205)

components of the normal stresses acting on bronchioles and alveolar walls determine their expansion (fig. 1)⁴: fluid pressure, tethering stress, and surface tension. A conceptual note on the physical meaning of these mechanical components is that, although related, they are not equivalent as pressure is a scalar (a physical quantity having only magnitude), whereas stress is a vector (a physical quantity with direction and magnitude).

- (1) *Fluid pressure* represents the pressure applied by fluids (gas or liquid) to the surface of the alveolar or bronchiolar wall. The net result of the fluid pressures derives from the difference of inside (P_i) and outside (P_o) pressures, expressed by the formulation of transmural pressure:

$$\text{Transmural pressure} = \text{inside pressure } (P_i) - \text{outside pressure } (P_o)$$

- (2) *Tethering stress* represents radial stresses caused by attachments of bronchioles and alveolar walls to adjacent structures through the tissue matrix. The radial tethering stress is mechanically transmitted to alveoli, bronchioles, and pleural surface through a network of collagen and elastin fibers composing the extracellular matrix in the pulmonary septa. These fibers are the force-bearing elements. The parenchymal cells themselves (epithelial and endothelial cells) have a lower mechanical contribution. Preserved lung interstitial architecture thus ensures the transmission of the tethering stress inside

This article is featured in “This Month in Anesthesiology,” page A1. Martin J. London, M.D., served as Handling Editor for this article. C.Z. and D.L. contributed equally to this article.

Submitted for publication December 4, 2020. Accepted for publication July 13, 2021. Published online first on September 8, 2021. From the Department of Anesthesia, Critical Care and Pain Medicine, Massachusetts General Hospital, Harvard Medical School, Boston, Massachusetts (C.Z., D.L., M.F.V.M.); and the Department of Anesthesia, University of California San Francisco, San Francisco, California (J.-W.L.).

Copyright © 2021, the American Society of Anesthesiologists. All Rights Reserved. *Anesthesiology* 2022; 136:181–205. DOI: 10.1097/ALN.0000000000003943

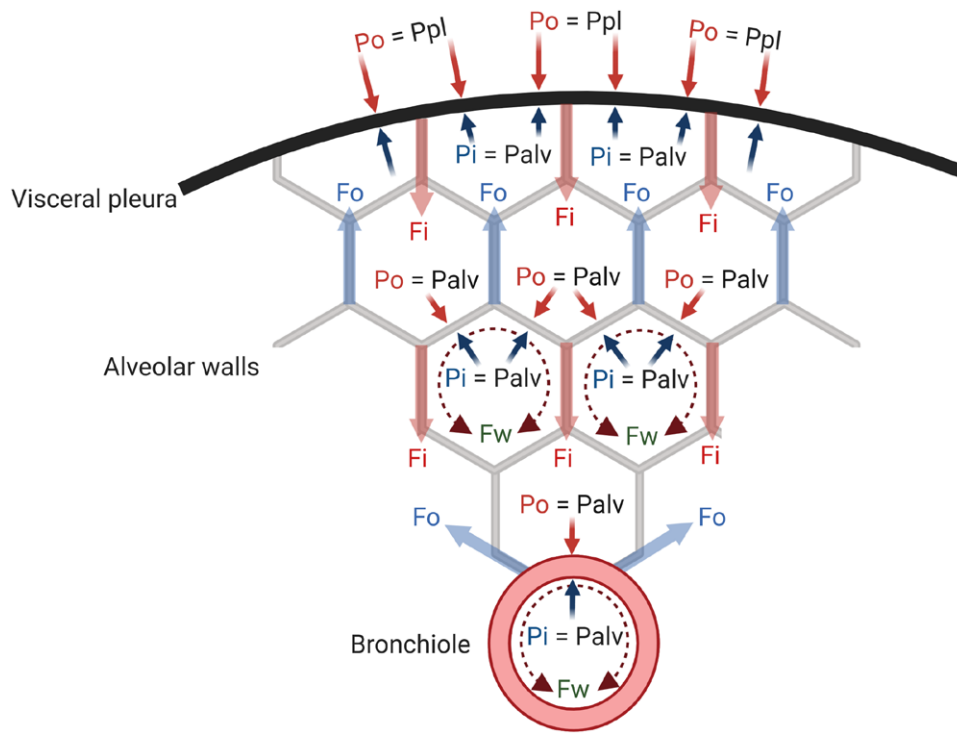


Fig. 1. Pressures and forces acting on alveolar and bronchiolar walls and visceral pleura surface. F_i , inward tethering; F_o , outward tethering; F_w , circumferential component of force applied by the layer of surface-active fluid; P_{alv} , alveolar pressure; P_i , inside pressure; P_o , outside pressure; P_{pl} , pleural pressure.

the lung parenchyma.⁵ The net effect of those stresses applied inside (F_i/A) and outside (F_o/A) the bronchioles or alveolar walls can be expressed as (fig. 1):

$$\text{Net tethering stress} = \left(\frac{\sum F_o}{A} \right) - \left(\frac{\sum F_i}{A} \right)$$

- (3) *Surface tension* represents the inward-acting radial stress arising from the circumferential components of forces applied by the thin layer of fluid lining the bronchioalveolar walls resulting from the effect of the surface tension (T). For a spherical structure with radius R (alveoli), the Young–Laplace pressure equation expresses the relationship between the pressure difference across the fluid interface (P_w) and the surface tension as:

$$P_w = \frac{2T}{R}$$

For a cylindrical structure of radius R (bronchioles), the relationship is:

$$P_w = \frac{T}{R}$$

Accordingly, the pressure difference across the fluid interface becomes substantial for small R . The surface tension

is likely more important in the cylindrical bronchioles than in alveoli, which are not strictly spherical.⁶ Pulmonary surfactant, a lipoprotein complex secreted by type II alveolar epithelial cells, is a critical biomechanical stabilizer to bronchioles and alveoli expansion.⁷ Its presence at the air–liquid interface strongly reduces surface tension, decreasing the magnitude of this collapsing contribution.

The balance of these forces and pressures allow for quantitative relationships in specific conditions (fig. 1):

- In equilibrium, the balance of the expanding and collapsing radial stresses acting on bronchioles or alveolar walls should be zero⁴:

$$(P_i - P_o) + \left(\frac{\sum F_o}{A} - \frac{\sum F_i}{A} \right) - P_w = 0$$

- No external tissue attachments are present at the pleural surface. Consequently, $F_o = 0$ and transmural pressure is determined by P_i (= alveolar pressure, P_{alv}) and P_o (= pleural pressure, P_{pl}). Radial stresses corresponding to the sum of inward-acting tissue and surface forces are balanced by the transmural pressure ($P_{alv} - P_{pl}$) acting on the pleural surface area (A_{pl}). Because the radius of the pleural surface curvature is large, the effect of surface

tension is negligible ($P_w \approx 0$). Accordingly, the balance of forces at the pleural surface is:

$$(P_{alv} - P_{pl}) = \frac{\sum F_i}{A_{pl}}$$

- Within the lung, if all airways are patent, pressures on the two sides of alveolar walls (i.e., P_i and P_o) equal the same alveolar pressure (P_{alv}). Therefore, transmural pressure between adjacent alveoli is null, and the outward-acting tethering force (F_o) counteracts inward-acting tissue and surface forces:

$$\frac{\sum F_o}{A} = \frac{\sum F_i}{A} + P_w$$

The Elastic Recoil of the Lung

Lung elastic recoil represents the propensity of lung tissue to shrink and is the main physiologic mechanism of passive exhalation. It results from the combined effects of: (1) extracellular matrix elastic fibers (contributing to F_i) and (2) bronchioloalveolar surface tension.^{4,7} Accordingly, degradation of the elastic fibers in the extracellular matrix, as during emphysema, reduces elastic recoil, thus reducing the expiratory capacity and acting against alveolar collapse.⁸ Conversely, diseases leading to quantitative or qualitative surfactant impairment increase surface tension and facilitate alveolar collapse.⁷

The Interdependent Lung Expansion

Pulmonary interdependence represents the interplay of mechanical forces among lung tissue components: alveolar units, airways, vasculature, and extracellular matrix. For instance, interdependence during lung expansion transmits tethering stress to traction airway walls outwards.^{5,9-11} Interdependence relies on normal lung architecture, including the extracellular matrix fibers.¹² In a homogeneous lung, outward tethering stresses ($\sum F_o/A_{pl}$) are transmitted from the visceral pleura surface to the innermost lung regions. These stresses are determined by the elastic recoil pressure of the lung $P_{el}(L)$,¹³ equal to the transmural pressure at the pleural surface:

$$P_{el}(L) = (P_{alv} - P_{pl}) = \frac{\sum F_o}{A_{pl}}$$

A positive $P_{el}(L)$, transmitted to the inner lung through interdependence, is the primary determinant of lung expansion. During awake spontaneous breathing, P_{pl} is negative throughout the pleural space, leading to a positive $P_{el}(L)$ as $P_{alv} = 0$ (= atmospheric pressure). In contrast, $P_{el}(L) \leq 0$ is associated with unphysiologic conditions resulting in lung collapse, such as open-chest or general anesthesia with mechanical ventilation.

The transpulmonary pressure (P_L) has been advanced as a surrogate of the elastic recoil pressure of the lung when the alveolar pressure (P_{alv}) can be approximated by the pressure at the airway opening (P_{ao}). This occurs when respiratory flows are zero (usually at end expiration and end inspiration) and no gas trapping exists¹³:

$$P_L = P_{ao} - P_{pl}$$

Hence, a positive transpulmonary pressure throughout the respiratory cycle is required to maintain alveolar expansion.

Mechanisms of Atelectasis in the Perioperative Period

General anesthesia, mechanical ventilation, and surgical interventions produce several biophysical factors promoting lung tissue collapse (fig. 2). Three major interrelated collapsing factors influence the balance of forces discussed above and contribute to perioperative atelectasis: increased pleural pressure, low alveolar pressure, and surfactant impairment. As a result of these factors, continuous or intermittent airway and alveolar closure occur, presumably more commonly the first than the latter.^{14,15}

Increased Pleural Pressure

Pleural pressure is the pressure within the pleural cavity. It varies regionally across the pleural space depending on anatomical and physiologic interactions between the lung parenchyma, chest wall, and gravity.¹⁶ General anesthesia affects such interactions increasing regional pleural pressure (e.g., dorso-caudal in supine patients), resulting in negative transpulmonary pressure and compressive atelectasis (fig. 2).

Functional Changes of the Diaphragm and Additional Chest Wall Components.

The chest wall can be understood as composed by two functional portions: an elastic portion represented by the rib cage and abdominal wall and a constant weight component exerting a hydrostatic pressure represented by the abdomen. Changes in these portions will affect pleural pressure and lung expansion in the perioperative period, in line with the previously discussed equilibration of forces throughout the lung. The diaphragm is the primary muscle of lung ventilation and, consequently, significantly contributes to lung expansion and atelectasis development during anesthesia. For example, in anesthetized intubated patients without cardiopulmonary disease, phrenic nerve stimulation to produce diaphragm contraction reduces atelectatic area by approximately 33% as compared to mechanical ventilation with equal tidal volumes.¹⁷

In supine spontaneously breathing humans, diaphragmatic displacement and lung expansion are larger in dependent than nondependent lung regions.^{18,19} This is due to the diaphragm dome shape with a smaller dependent radius of

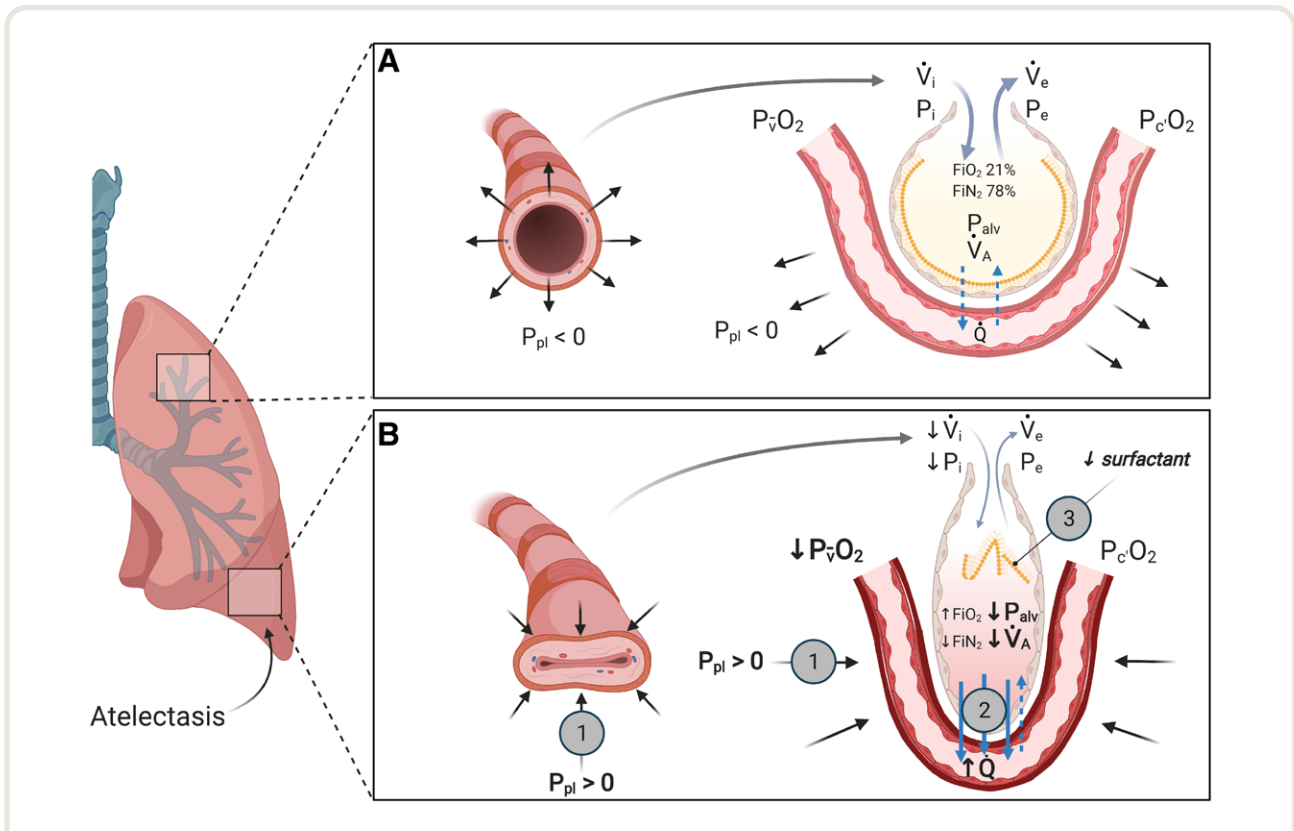


Fig. 2. Mechanisms producing atelectasis in the perioperative period. (A) Normal lung unit in awake conditions. Adequate inspiratory (P_i) and expiratory (P_e) intraluminal pressure and bronchiolar or alveolar tethering stress associated with negative pleural pressure (P_{pl}) allow for the normal opening of the bronchiole and a normal alveolar ventilation (\dot{V}_A). Alveolar gas absorption is physiologic due to physiologic \dot{V}_A / lung perfusion (\dot{Q}) and atmospheric fraction of inspired oxygen (FiO_2). Normal surfactant reduces alveolar surface tension. (B) Lung unit exposed to perioperative atelectasis. The increase in pleural pressure (P_{pl}) due to extrinsic or intrinsic compression (circle 1) is responsible for the loss of expansion and reduced alveolar ventilation (\dot{V}_A). Increased alveolar gas absorption (circle 2) reduces intraluminal alveolar pressure (P_{alv}). Low \dot{V}_A / \dot{Q} , high FiO_2 , and low mixed venous oxygen partial pressure ($P_{\bar{v}O_2}$) may participate in such gas exchange imbalance. Quantitative or qualitative surfactant impairment leads to higher surface tension and facilitates alveolar collapse (circle 3). FiN_2 , fraction of inspired nitrogen; P_{cO_2} , end-capillary oxygen partial pressure.

curvature, higher dependent stretch producing more favorable dorsal length-tension relationships, and possibly larger number of muscle fibers²⁰ and higher compliance of the crural than costal diaphragm.¹⁸ Diaphragm tension reduces the transmission of abdominal pressure to the lungs.²¹ Reduction or loss of such diaphragmatic tone during anesthesia thus affects the net balance of stresses acting on the lungs, not only reducing the preferential dependent displacement of the diaphragm but also facilitating the transmission of abdominal pressure to the lungs. This results in a cephalad shift of the dependent diaphragm with dependent lung compression and atelectasis^{22,23} and no change or caudad shift of nondependent regions.^{19,23} Relaxation of accessory respiratory muscles such as intercostals, scalenes, and sternocleidomastoids further contribute to reduction in cross-section chest area and lung aeration (fig. 3). In spontaneously breathing normal subjects receiving volatile anesthesia, the activity of parasternal muscles is abolished, and phasic expiratory activity in abdominal and lateral rib cage

muscles is enhanced,²⁴ contributing to caudad-dependent atelectasis.²³ Muscle paralysis compounds to the dependent cephalad shift of the diaphragm and atelectasis during general anesthesia,²³ as the balance between alveolar pressure and the gravity-dependent hydrostatic pressure of abdominal contents becomes the main determinant of diaphragm motion.¹⁹ Ultimately, atelectasis that is preferentially dependent and caudad is detected in 90% of a broad population of patients without cardiopulmonary disease undergoing general anesthesia,²⁵ with up to 20 to 25% of initially normal lung either atelectatic or poorly aerated in transverse computed tomography during anesthesia.²⁶

Increased abdominal pressure as present with pneumoperitoneum, obesity, abdominal compartment syndrome, peritonitis, or abdominal shift of intrathoracic blood^{27,28} produces further imbalance of net stresses on the lung, because it exposes the dorso-caudal lung to higher pleural pressure and susceptibility to atelectasis,^{2,29} with cephalad shift of both diaphragm and intra-abdominal organs.^{19,23,27}

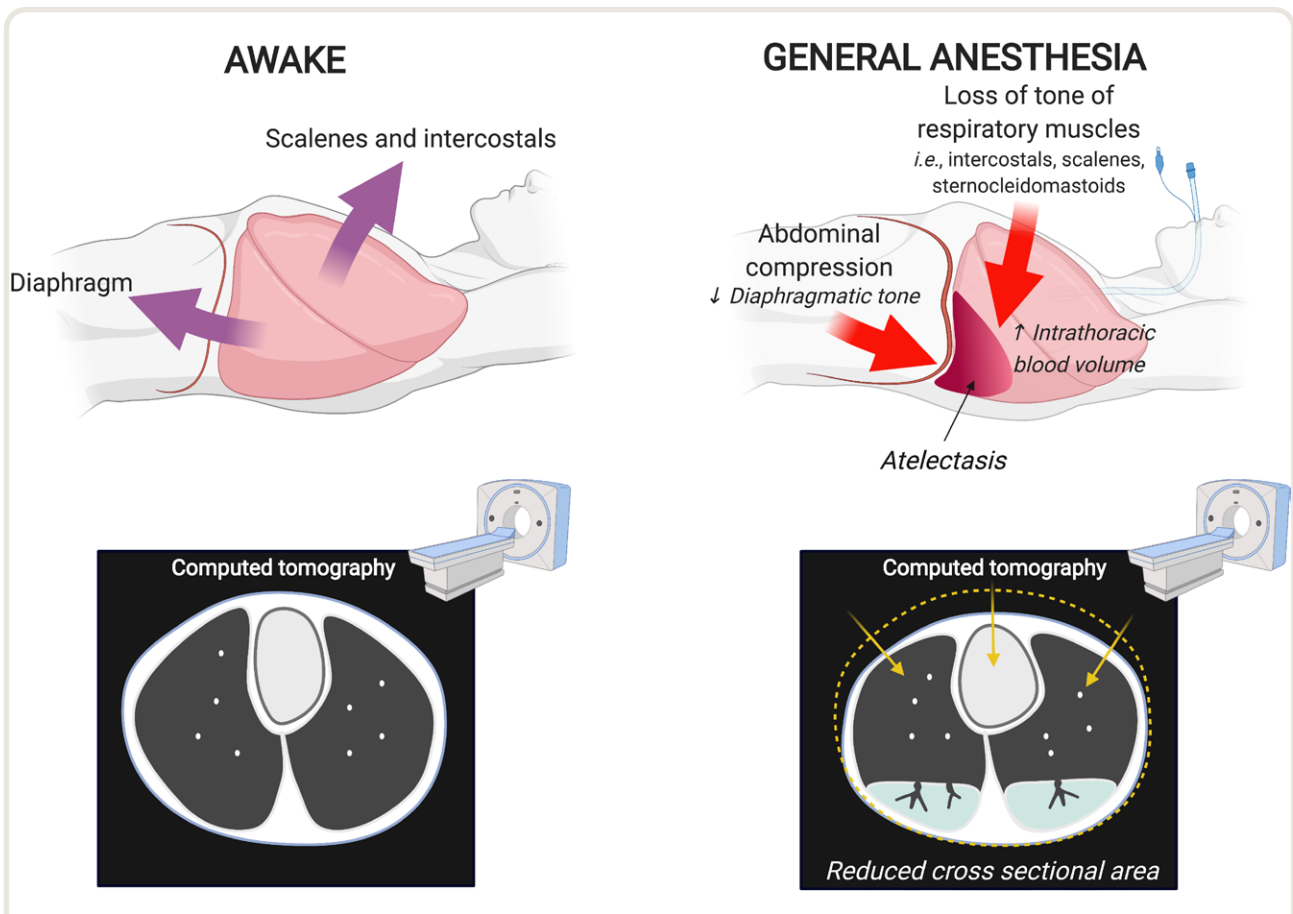


Fig. 3. Changes in chest wall shape due to general anesthesia in a supine patient. During awake spontaneous breathing, contraction of diaphragm and accessory muscles of respiration maintain lung expansion. Loss of muscular tone during anesthesia is associated with cephalad motion of the dependent diaphragm, reduction in cross-sectional chest area, and generation of nongravitational compressive forces (*i.e.*, cephalocaudal gradients). Together with gravitational forces and potential increase in intrathoracic blood volume, these factors contribute to reduction of lung volume and lung collapse, particularly on the dorsal and basal lung regions.

Of note, cephalad-outward movement of the lower ribs potentially produced by those factors can increase the cross-section of the lower chest and partially compensate for the loss of lung volume.²¹

Although gravity has been frequently cited as a key determinant of lung expansion, cephalocaudal gradients of lung expansion present in large animals³⁰ and humans^{22,31} indicate the relevance of factors other than gravity. These factors include the matching of the lung to the thoracic cavity and the partially independent displacement of lobes, which are relevant determinants of regional lung expansion in supine and prone positions beyond gravitational factors.^{30,32} Perioperative chest wall reshaping is influenced by body position, with proning allowing for recruitment of dorso-caudal lung.³³

Postoperative respiratory muscle dysfunction, particularly diaphragm dysfunction, has been documented after abdominal,³⁴ thoracic,³⁵ and cardiac surgery.³⁶ It facilitates the development of atelectasis as demonstrated

by the significantly larger fraction of patients with atelectasis 24 h after thoracic surgery in the presence of postoperative ultrasound-diagnosed diaphragmatic dysfunction (35%) than in its absence (13%).³⁵ Diaphragm dysfunction can persist from a day to a week^{37,38} and even up to a year.³⁹ It can occur because of direct injury to the diaphragm³⁶ or phrenic nerve⁴⁰ or because of indirect factors such as phrenic nerve dysfunction^{37,41} and impaired thoracoabdominal mechanics.⁴² These factors could compound with previous diaphragmatic compromise, for example, as present in neuromuscular disorders, sepsis,⁴³ abdominal hernias,⁴⁴ and potentially obesity.⁴⁵ Of note, diaphragmatic function could conversely affect regional lung inflammation by producing local high transpulmonary pressures as shown by the observation that spontaneously breathing lung-injured pigs exposed to low positive end-expiratory pressure (PEEP) present more dependent lung inflammation than those receiving high PEEP.⁴⁶

Although anesthetics (e.g., isoflurane, sevoflurane, and propofol) can compromise diaphragmatic function,^{47–49} they do not affect contractility.⁵⁰ The diaphragmatic electromyographic activity can also be impaired by unwarranted administration of cholinesterase inhibitors, for example, neostigmine followed by sugammadex in humans⁵¹ or neostigmine administered after full recovery from neuromuscular block in rats.⁵²

Intrapulmonary Gravity Gradient. The weight of the nondependent lung compresses the dependent lung and pleural space determining pleural pressure increases along the vertical axis¹¹ with transpulmonary pressure reduction in dependent lung regions.^{53,54} Pulmonary edema increases the weight of the lung tissues, increasing the risk of dependent atelectasis caused by the superimposed hydrostatic pressure.^{54,55} Body position influences the effect of intrapulmonary compression by modulating the volume of dependent lung. For instance, the triangular shape of the lungs with the large dorsal base results in a greater volume of dependent lung in the supine than in the prone position.^{55,56}

Compression by Intrathoracic Elements. In supine patients, the mediastinal weight, particularly the heart, has been associated with pleural space compression and preferential retrocardiac lung collapse.⁵⁷ Pleural effusions may also compress the lung. However, the effusion volume does not entirely translate into compression⁵⁸ because of the compliance of the chest wall. For instance, in ARDS patients, chest wall expansion in the presence of a pleural effusion accommodates ~70% of the effusion volume.^{58,59}

Low Alveolar Pressure

The concept of critical opening pressure has been introduced as the minimal alveolar pressure (P_{alv} in the previously described formulation) required to counteract the regional effect of collapsing forces.⁶⁰ Accordingly, lung units are expanded when alveolar pressure is higher than the critical opening pressure. A parallel concept is that of critical closing pressure, *i.e.*, the alveolar pressure below which open lung units collapse. Mean closing pressure has been estimated as 6 cm H₂O in a small number of anesthetized mechanically ventilated patients,⁶¹ an interesting value to compare to the usual initial clinical setting of 5 cm H₂O. As determined experimentally in animal and computational models,^{62,63} the critical closing pressure is lower than the critical opening pressure due to lung hysteresis, *i.e.*, the difference between the inspiratory and expiratory components of the pulmonary pressure–volume curve, produced by opening of previously nonaerated peripheral airspaces.⁶⁴ Due to the vertical dependence of pleural pressures, critical opening pressures are higher in dependent regions as lung regions exposed to positive pleural pressure require alveolar

pressures higher than these pleural pressures to achieve positive transpulmonary pressure and expansion.

The rationale for the use of PEEP derives from such a concept, ultimately aiming to keep alveolar pressures above critical closing pressures at end-exhalation to prevent lung collapse. Local variation in critical opening and closing pressures conditions the regions expanded and kept inflated throughout the breathing cycle at a given PEEP. Even normal lungs, when mechanically ventilated without PEEP for many hours, will progressively lose aeration preferentially in dorsal regions.⁶⁵ Of note, lung hysteresis imply that the PEEP required to keep lung regions open is lower than that required to open them (fig. 4).⁶⁶ This provides support to the practice of recruiting the lungs at pressures higher than those used during steady state mechanical ventilation.

Resistance of Upstream Airways. The transmission of upper airway pressures to distal lung regions, *i.e.*, the proximity between P_{alv} and P_{ao} , depends on the patency of regional airways (fig. 2). Increased airway resistance, secondary to airway constriction, obstruction, or compression¹³ determines a pressure drop in the distal lung with local alveolar pressures potentially lower than tracheal pressures ($P_{alv} < P_{ao}$). *Obstructive atelectasis* is the term used to describe lung collapse resulting from airway obstruction, usually caused by mucous plugs and retention of secretions superimposed or not to airway constriction. Anesthetics dose-dependently compromise ciliary motility of respiratory epithelial cells (isoflurane, ketamine, thiopental) potentially facilitating obstruction, and this compromise seems weaker with sevoflurane,⁶⁷ fentanyl or propofol.⁶⁸ Mucociliary clearance appears to be more compromised by cuffed endotracheal tubes than laryngeal mask airways.⁶⁹

Balance of Alveolar Gas Exchange. Lung units presenting larger alveolar gas outflow than inflow will ultimately collapse. This is the basic concept of *absorption atelectasis*.⁷⁰ Such an imbalance is mostly determined by low local alveolar ventilation-to-perfusion (\dot{V}_A/\dot{Q}) ratios and high fraction of inspired oxygen. Low \dot{V}_A/\dot{Q} determines low inflow of fresh air into alveoli in relation to the local perfusion associated with O₂ absorption. The lowest \dot{V}_A/\dot{Q} ratios are found in the most gravity-dependent regions,⁷¹ where intraoperative atelectasis is typically present.^{72,73} High fraction of inspired oxygen facilitates outflow as alveolar gas absorption by capillary blood is higher with O₂ than with gases presenting lower blood:gas solubility as nitrogen.^{74–77} Lower mixed venous oxygen content further increases the rate of oxygen absorption (fig. 2).

Surfactant Impairment

Several factors during general anesthesia could impair surfactant function and contribute to the development of atelectasis: inflammatory response, mechanical ventilation, high

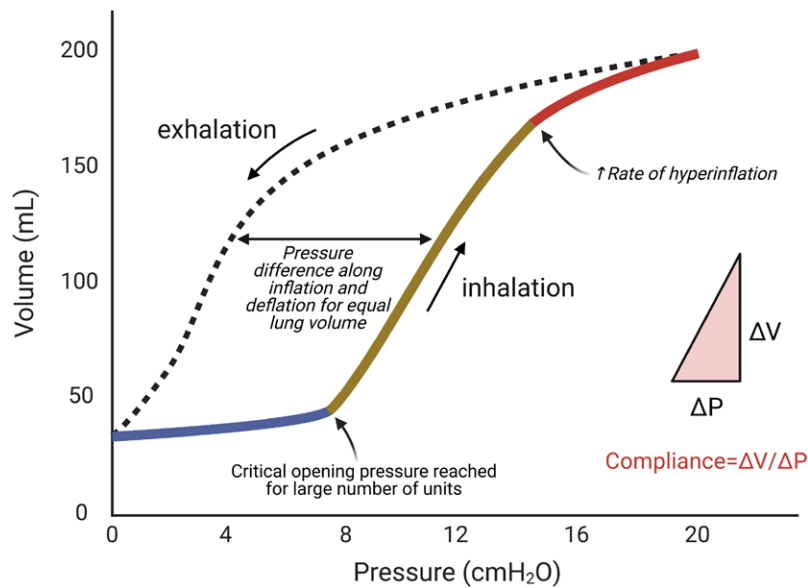


Fig. 4. Pulmonary pressure–volume curve during inhalation and exhalation showing lung hysteresis. The shape of the lung pressure–volume curve is sigmoidal. There are three main portions of the curve. The initial portion (*blue*) of lung recruitment at low pressures and volumes is related to low compliance (*i.e.*, the change in volume [ΔV] divided by the change in pressure [ΔP] is low). This is followed by a portion with a linear relationship between volume and pressure with higher compliance (*ochre*). Finally, hyperinflation ensues at high pressures and volumes with return of lower compliance (*red*). The transition between the first and second portions indicate that critical opening pressures for a large number of bronchoalveolar regions has been reached (lower inflection point). Note the higher pressure during inhalation to reach the same lung volume as during exhalation. Modified from Radford.⁶⁶

oxygen concentration, anesthetics, and pulmonary edema. While these factors produce minimal compromise in short uncomplicated cases, they could become relevant as the surgical insult and patient compromise increase.

Inflammatory lung injury resulting from endotoxemia and bacteremia lead to reduced production of surfactant phospholipids,⁷⁸ increased surfactant turnover,⁷⁹ decreased tubular myelin⁸⁰ and altered surfactant protein A gene expression.⁸¹ Inflammation with surfactant dysfunction is also present during severe respiratory failure and pneumonia.⁸² This dysfunction can be mediated by inflammatory cytokines,⁸³ proteases secreted from immune cells,⁸⁴ and increased proteins in alveoli.⁸⁵ In line with these findings, *in vivo* lung neutrophilic inflammation developing within few hours of mechanical ventilation in poorly aerated areas was reported in association with surfactant dysfunction,⁸⁶ with inflammation worsened by endotoxemia.⁸⁷ The translational relevance of such data is suggested by the quantitative and qualitative surfactant impairment observed in surgeries associated with large systemic and pulmonary inflammatory response (*e.g.*, on-pump cardiac surgery) or lung injury.^{88,89}

Mechanical ventilation impairs surfactant production by type II alveolar cells^{90,91} through alveolar overstretching,⁹² under-stretching⁹³ and monotonic stretching.⁹⁴ Conversely, deep breaths⁹⁵ and biologically variable ventilation⁹⁶ increase

the release of active surfactant. Short-term exposure to high oxygen concentrations (100%) adversely affects surfactant function by increasing its susceptibility to rupture.⁹⁷ Suggestion that inhaled anesthetics could compromise surfactant biosynthesis in time- and dose-dependent patterns comes to date essentially from *in vitro* studies and is rapidly reversible after discontinuation.⁹⁸ Pulmonary edema, *e.g.*, from fluid overload, can change surfactant activity and increase surface tension, potentially by the loss of surfactant into the edema fluid.⁹⁹ For permeability pulmonary edema, surfactant function can be inactivated by proteins in alveoli secondary to barrier disruption,^{82,100} *via* increasing its conversion to non-surface-active forms.⁸⁵

Pathophysiologic Effects of Pulmonary Atelectasis

Global Physiologic Effects

Respiratory Mechanics and Lung Volumes. Functional residual capacity is reduced in the supine position, and further by general anesthesia and muscle paralysis. Such decrease is associated with loss of muscle tone, and related reduction of the cross-sectional area of the thorax,²³ cephalad displacement of the diaphragm,¹⁹ increased curvature of the vertebral column,²⁴ and increased intrathoracic blood

volume.²² Of note, change in diaphragm displacement, thorax cross-section or functional residual capacity during general anesthesia were found not to correlate to the magnitude of atelectasis^{22,23} suggesting the relevance of other factors for ultimate lung collapse, such as intrathoracic blood volume and decreased volume of the aerated lung.

Atelectasis is associated with lower respiratory system and lung compliances. This is because closure of alveoli and small airways corresponds to the low-volume portion of the pressure–volume curve associated with smaller change in lung volumes in relation to applied pressures, *i.e.*, low compliance (fig. 4).^{101,102} Indeed, in mechanically ventilated dogs, the respiratory system compliance is linearly related to lung volume.¹⁰³ Alveolar and airway closure is affected by supine position and may be further influenced by obesity (fig. 5).¹⁰⁴ Higher driving pressures ($P_{\text{plateau}} - \text{PEEP} = \text{tidal volume/respiratory system compliance}$) consequently also ensue.¹⁰⁵ End-expiratory lung volumes can be lower than closing capacity during mechanical ventilation likely due to loss of radial traction from parenchymal interdependence.^{10,106} The same mechanism may contribute to the increased lung and respiratory system resistance associated with atelectasis in obese patients.¹⁰⁷ Of note, once atelectasis settles, the lung pressure–volume curve also becomes abnormal, further compounding the loss of lung volume.

Gas Exchange. The most clinically evident pathophysiologic effect of pulmonary atelectasis is hypoxemia.^{1,102} Impaired blood oxygenation has been described during routine general anesthesia with both controlled¹⁰⁸ and spontaneous ventilation,¹⁰⁹ and correlated with the degree of atelectasis.^{22,110} The mechanisms are low \dot{V}_A/\dot{Q} ratios and intrapulmonary right-to-left shunt.^{109,111} In experimental and clinical studies, alveolar recruitment promptly reverses gas exchange dysfunction.^{1,101,112} Chronic obstructive pulmonary disease patients are less susceptible to oxygen absorption atelectasis¹¹³ and may develop less atelectasis during mechanical ventilation after cardiopulmonary bypass,¹¹⁴ presumably due to a combination of loss of elastic recoil and high airway resistance.

Hypoxic Pulmonary Vasoconstriction. Hypoxic pulmonary vasoconstriction is a reflex constriction particularly of distal pulmonary arteries but also venules in response to hypoxia.^{115,116} Oxygen sensing occurs at the alveolo-capillary level,¹¹⁷ with endothelial cell depolarization and retrograde propagation of the signal *via* gap junctions to upstream arterioles, where it is transmitted to pulmonary arterial smooth muscle cells to produce vasoconstriction.¹¹⁷ In health, the onset of the reflex to hypoxic gas mixtures occurs within seconds, and progresses into a plateau period (phase 1) of at least 20 min, and then a further rise (phase 2) starting after ~43 min and reaching a peak at ~2 h.¹¹⁸ This pattern is consistent with the response times to atelectasis observed in a dog model.¹¹⁹

Hypoxic pulmonary vasoconstriction mitigates right-to-left shunt diverting blood away from poorly oxygenated lung areas, thus supporting adequate arterial oxygenation during general anesthesia.^{120,121} The more effective the hypoxic pulmonary vasoconstriction, the lower the effect of atelectasis on right-to-left shunt and consequent hypoxemia. In normal humans, 47% of blood flow is diverted from a hypoxemic lobe within 5 min.¹²¹ Factors that impair hypoxic pulmonary vasoconstriction accentuate hypoxemia produced by atelectasis: pneumonia,¹²² ARDS,¹²³ endotoxemia,¹²⁴ sepsis,¹²⁵ calcium channel blockers,¹²⁶ atelectatic size,¹²⁷ or volatile agents (isoflurane, sevoflurane, desflurane) above 1 minimum alveolar concentration.^{128–130} Mechanical factors associated with atelectasis could also impair hypoxic vasoconstriction; for example, unstable alveoli in the collapsed large animal lung could stent open pulmonary corner vessels through outward radial traction, reducing the hypoxic constriction.¹³¹ Intravenous anesthetics present a discrete to nonexistent effect on hypoxic vasoconstriction, because no blunting has been found with propofol,¹³² ketamine,¹³³ or fentanyl,¹³⁴ whereas others found even oxygenation improvement with propofol.^{133,135} During general anesthesia, the significant correlation between shunt and atelectatic area calculated from computed tomography in patients without significant lung disease indicates that hypoxic pulmonary vasoconstriction is not complete and contributes to hypoxemia even in normal lungs.¹¹⁰ In disease conditions, a strong correlation between shunt and atelectatic volume suggests more compromised hypoxic pulmonary vasoconstriction such as observed after mitral valve surgery when compared to coronary artery bypass graft surgery.¹³⁶

In normal humans, increases in the mean pulmonary artery pressure of ~10 mmHg are observed due to hypoxic vasoconstriction with arterial oxygen saturation changes from more than 95% to 85 to 90% and of ~16 mmHg with arterial oxygen saturation of 75 to 80%, corresponding to a duplication and more of the pulmonary vascular resistance.¹³⁷ In severe cases, right ventricular dysfunction can ensue as a consequence of the afterload elevation during atelectasis.^{138,139} Accordingly, alveolar recruitment reduces pulmonary vascular resistance and increases pulmonary blood flow in patients after cardiopulmonary bypass¹⁴⁰ and in dogs with healthy or injured lungs,^{141,142} subsequently improving right ventricular function.

Regional Molecular and Cellular Response

Molecular (*e.g.*, cytokine, chemokine, and pathways) and cellular (*e.g.*, alveolar endothelial, epithelial, and inflammatory) changes during atelectasis imply significant local biologic responses and allow for insights into the mechanisms of lung injury. Atelectasis-associated lung injury could relate to direct or indirect, independent or

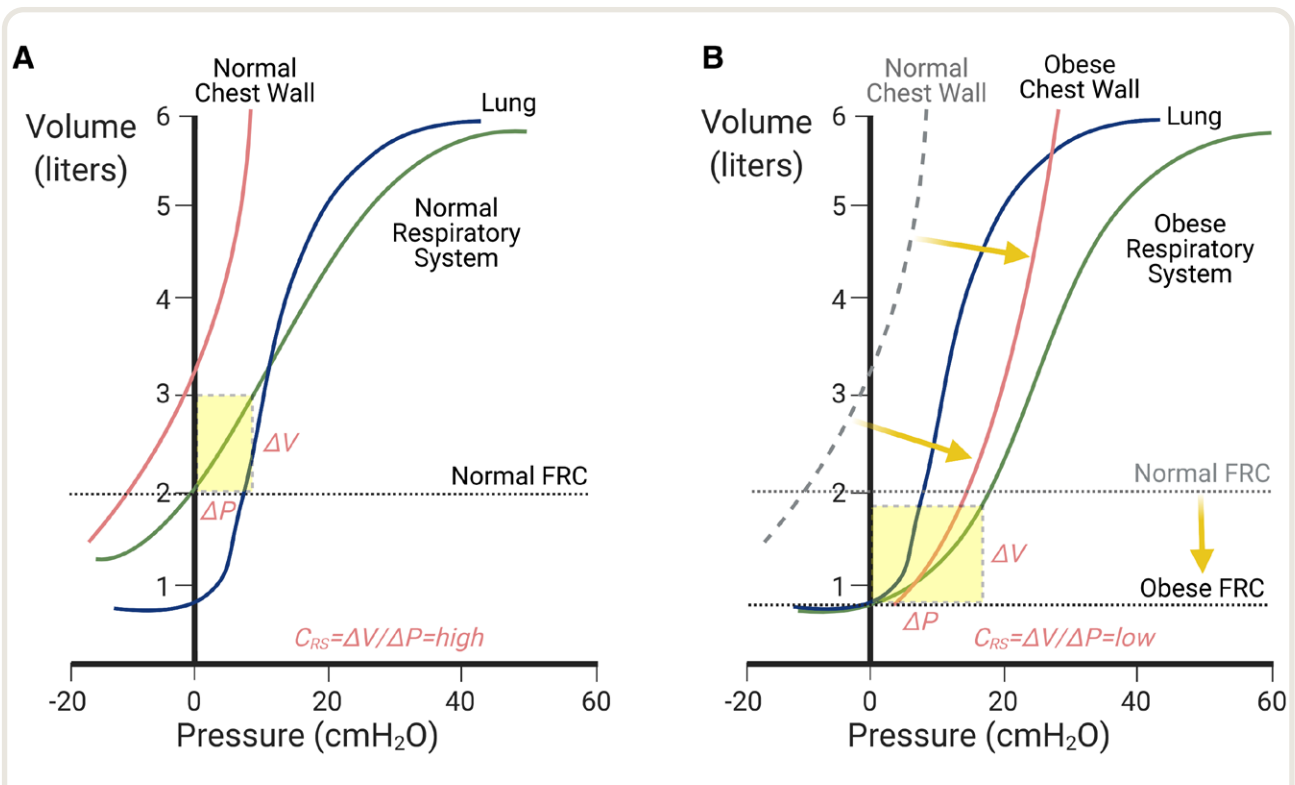


Fig. 5. Pressure–volume relationship for the chest wall, lungs, and their combination (respiratory system) in normal (A) and obese (B) subjects in supine positions. (A) The shape of the respiratory system pressure–volume curve reflects the balance of the forces from the chest wall and lung parenchyma. In normal subjects, functional residual capacity (FRC) is reduced as compared to the upright position but large enough to locate an operating range of the respiratory system pressure–volume curve within a region of high compliance (dashed yellow rectangle). (B) In obese subjects, increased weight of the chest wall and abdomen shift the chest wall pressure–volume curve to the right at similar chest wall compliances. Combined with the substantial reduction of functional residual capacity, the operating range of the respiratory system pressure–volume curve moves to a region of low compliance (dashed yellow rectangle). This occurs even in the presence of the same normal pressure–volume curve of the lungs. C_{RS} , compliance of the respiratory system; ΔP , change in pressure; ΔV , change in volume. Modified from Behazin *et al.*¹⁰⁴

synergistic local biologic effects such as inflammation, structural damage, hypoxic injury, surfactant dysfunction, and susceptibility to infection (fig. 6).

Inflammatory Response. Links between atelectasis and inflammation have been indicated by clinical and experimental studies. Indeed, normal lungs exposed to 16 h of atelectasis and mechanical ventilation with low tidal volumes presented metabolic changes suggestive of incipient inflammation in large animals with aeration heterogeneity comparable to that of humans.⁶⁵ The hallmarks of atelectasis-related inflammatory response include the presence of cytokines and immune cells and their functional alteration (table 1).

Cytokine Response

Atelectasis is often associated with local production of inflammatory cytokines. Multiple clinical studies of

one-lung ventilation^{145,146,153} have reported increased levels of proinflammatory cytokines in the atelectatic lung, such as interleukins 1, 6, and 8 and tumor necrosis factor α , all involved in inflammatory injury. These cytokine levels were directly related to the duration of atelectasis^{146,153} and potentially increase the susceptibility to postoperative pulmonary complications in patients undergoing lung resection surgery.¹⁴⁵ Moreover, atelectasis could result in significant concentrations of chemotactic cytokines, including chemokine (C-X-C motif) ligand 1,¹⁴⁴ a potent neutrophil chemoattractant; platelet-activating factor,¹⁴⁷ a mediator of platelet aggregation and degranulation, and leukocyte chemotaxis; and keratinocyte-derived chemokine,¹⁴³ another immune cell chemoattractant particularly for neutrophils. As a result, cytokines increased in atelectatic areas may cause direct injury and additionally act as homing molecules recruiting cells (e.g., neutrophils) into these regions that could further magnify damage, for example by releasing injurious cytokines.

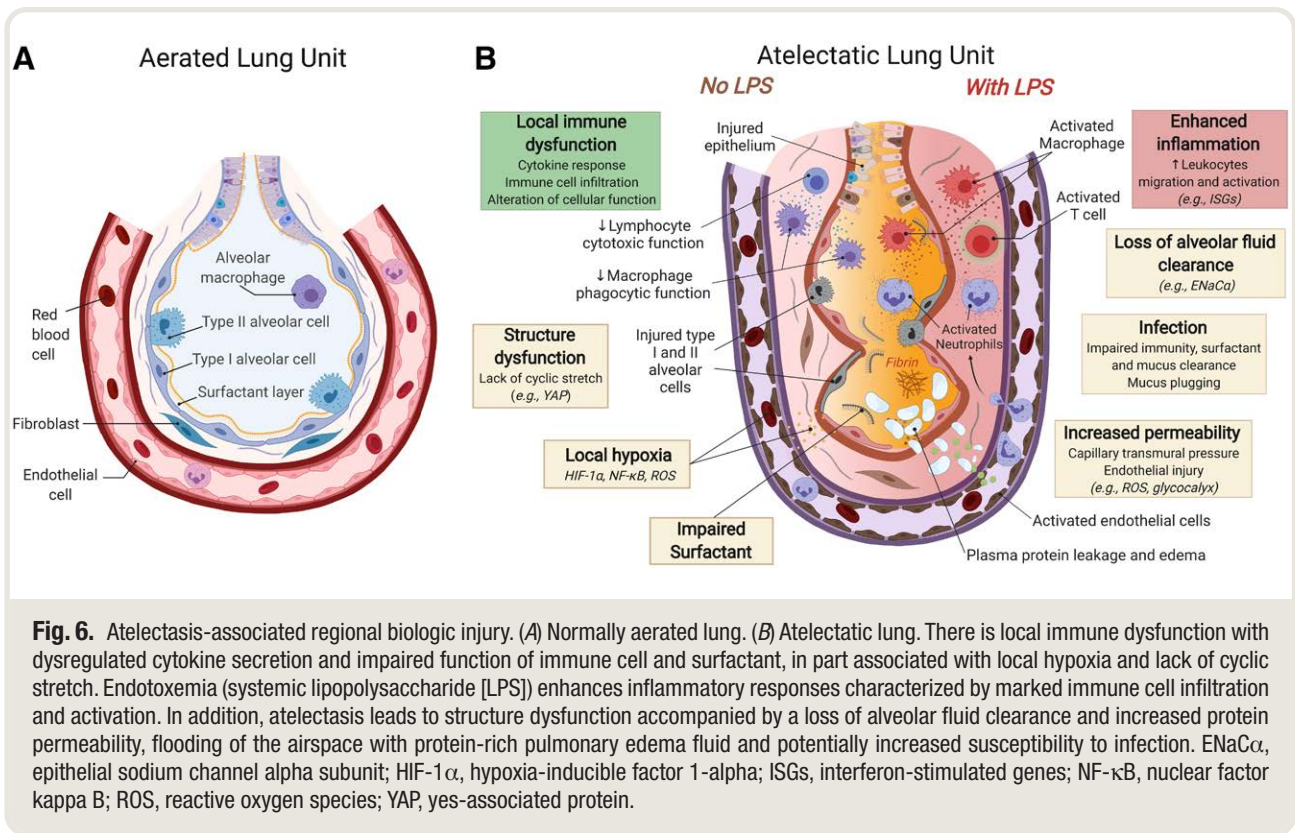


Fig. 6. Atelectasis-associated regional biologic injury. (A) Normally aerated lung. (B) Atelectatic lung. There is local immune dysfunction with dysregulated cytokine secretion and impaired function of immune cell and surfactant, in part associated with local hypoxia and lack of cyclic stretch. Endotoxemia (systemic lipopolysaccharide [LPS]) enhances inflammatory responses characterized by marked immune cell infiltration and activation. In addition, atelectasis leads to structure dysfunction accompanied by a loss of alveolar fluid clearance and increased protein permeability, flooding of the airspace with protein-rich pulmonary edema fluid and potentially increased susceptibility to infection. ENaC α , epithelial sodium channel α subunit; HIF-1 α , hypoxia-inducible factor 1- α ; ISGs, interferon-stimulated genes; NF- κ B, nuclear factor kappa B; ROS, reactive oxygen species; YAP, yes-associated protein.

Inflammatory Cell Response

Atelectasis contributes to inflammatory cell infiltration, at least in part through the inflammatory cytokines described above. For example, neutrophils, key immune cells in the inflammatory response and tissue damage are increased in bronchoalveolar lavage fluid of atelectatic regions in mechanically ventilated patients or spontaneously breathing dogs when compared to fluid obtained before atelectasis.^{147,149,154} Those inflammatory infiltrates related to atelectasis duration¹⁵⁴ and were further magnified by systemic endotoxemia.¹⁵⁵ Additionally, atelectasis by itself can alter cellular immune function; for example, it can enhance alveolar macrophage cytokine secretion in rats,¹⁵¹ impair macrophage phagocytosis against bacteria *in vitro* in piglets,¹⁵² and reduce local bronchoalveolar lymphocyte function in dogs.¹⁴⁹

Current evidence reinforces the concept that atelectasis produces an inflammatory response with pathophysiologic mechanisms different from those occurring in aerated lung regions. Indeed, different transcriptomic patterns in immunity have been documented recently in the atelectatic *versus* ventilated sheep lung, with fewer NF- κ B-related genes in sterile lungs and more interferon-stimulated genes in the presence of systemic endotoxemia.¹⁴⁸ Such regional differences have also been found in a one-lung ventilation rat model showing increased myeloperoxidase, a neutrophil marker, in atelectasis and CCL2, a

macrophage chemoattractant, in aerated lung regions.¹⁴⁴ Accordingly, findings reporting the similarity of inflammatory injury between atelectatic and ventilated lung either in humans^{145,153,156} or in animals^{144,150} may actually derive from different underlying cytokine and genomics responses in aerated and atelectatic areas. Understanding such regional responses to atelectasis could help to identify potential treatments beyond the usual ventilatory interventions. For example, nanoparticle delivery of micro-RNAs (*i.e.*, miR-146a) mitigated mouse lung injury during mechanical ventilation.¹⁵⁷

Structural Dysfunction. Pulmonary structure disruption is a hallmark of lung injury. Immobility (lack of cyclic stretch) associated with atelectasis could contribute to structural damage potentially by disorganization of actin networks,¹⁵⁸ loss of adherens junction,¹⁵⁹ and impairment of barrier properties.^{160,161} A recent sheep study also provided genomic support to these findings by revealing in initially healthy atelectatic lungs dysfunction of the lung tissue transcriptome related to structural components: endothelium, epithelium, and actin cytoskeleton.¹⁵⁴

Other factors potentially present during atelectasis such as inflammation and ischemia can also lead to structural dysfunction, such as impairment of sodium and chloride channels (*i.e.*, ENaC α),¹⁶² an ATP-dependent process involved in alveolar fluid clearance; and injury of the endothelial

Table 1. Atelectasis-associated Inflammatory Response in Clinical and Animal Studies

Inflammatory Response	Subject	Model/Design	Mechanical Ventilation	Samples	Results	Reference
Cytokine production	C57BL/6 mice	<i>Ex vivo</i> model of isolated, buffer-perfused lungs	$V_T = 7$ ml/kg, PEEP = 0 cm H_2O , no recruitment	Bronchoalveolar lavage fluid	↑ Keratinocyte-derived chemokine	Wakabayashi <i>et al.</i> 2014 ¹⁴³
	Sprague–Dawley rats	One-lung ventilation model	$V_T = 8$ ml/kg, PEEP = 4 cm H_2O , two-lung ventilation, and one-lung ventilation	Lung homogenates	↑ Myeloperoxidase ↓ Chemokine (C-C motif) ligand 2	Tojo <i>et al.</i> 2015 ¹⁴⁴
	Patients, lung resection surgery	Prospective, observational	Two-lung ventilation: $V_T = 8$ ml/kg, PEEP = 3–5 cm H_2O ; one-lung ventilation: $V_T = 6$ ml/kg, PEEP = 5 cm H_2O	Bronchoalveolar lavage fluid	↑ Interleukins 1, 2, and 6, tumor necrosis factor α , nitric oxide, carbon monoxide, and matrix metalloproteinase 2	de la Gala <i>et al.</i> 2015 ¹⁴⁵
	Patients, lung resection surgery	Prospective, observational	$V_T = 10$ ml/kg, RR to maintain normal $Paco_2$	Epithelial lining fluid	↑ Interleukin 8	Komatsu <i>et al.</i> 2012 ¹⁴⁶
	ICU patients with atelectasis and no cardiopulmonary disease	Prospective controlled study	$V_T = 9–11$ ml/kg with PEEP = 3–5 cm H_2O	Bronchoalveolar lavage fluid	↑ Platelet-activating factor	Nakos <i>et al.</i> 2003 ¹⁴⁷
	Sheep	Left lung collapse and right lung ventilated model with or without systemic LPSs	$V_T = 10$ ml/kg with PEEP = 2 cm H_2O	Lung tissue mRNA	↓ Chemokine (C-X-C motif) ligand 8 and coagulation factor II (thrombin) receptor-like 1 (without systemic LPSs) ↑ Chemokine (C-X-C motif) ligands 9 and 10, chemokine (C-C motif) ligand-5, interleukin 12B, interferon-induced GTP-binding proteins 1 and 2 (with systemic LPSs)	Zeng <i>et al.</i> 2020 ¹⁴⁸
Cell infiltration	Dogs	Lobar atelectasis		Bronchoalveolar lavage fluid	↑ Neutrophils	Nguyen <i>et al.</i> 1991 ¹⁴⁹
	ICU patients with atelectasis and no cardiopulmonary disease	Prospective controlled study	$V_T = 9–11$ ml/kg with PEEP = 3–5 cm H_2O	Bronchoalveolar lavage fluid	↑ Neutrophils	Nakos <i>et al.</i> 2003 ¹⁴⁷
	Wistar albino rats	Pneumothorax model		Lung tissue	↑ Neutrophils	Sivrikoz <i>et al.</i> 2002 ¹⁵⁰
Cellular function	Sprague–Dawley rats	Left main stem bronchus ligation	$V_T = 2.5$ ml/kg, RR = 90 breaths/min	Alveolar macrophages	↑ Activation with increased interleukin 1 and tumor necrosis factor release	Kisala <i>et al.</i> 1993 ¹⁵¹
	Yorkshire swine	Right upper lobe atelectasis		Alveolar macrophages	↓ <i>In vitro</i> phagocytosis against <i>Pseudomonas aeruginosa</i>	Shennib <i>et al.</i> 1984 ¹⁵²
	Dogs	Lobar atelectasis		Bronchoalveolar lymphocytes	↓ Cytotoxic activity	Nguyen <i>et al.</i> 1991 ¹⁴⁹

ICU, intensive care unit; LPS, lipopolysaccharide; NO, nitric oxide; $Paco_2$, partial tension of carbon dioxide; PEEP, positive end-expiratory pressure; RR, respiratory rate; V_T , tidal volume.

glycocalyx layer,¹⁶³ a critical component for lung barrier homeostasis. Re-expansion of atelectatic lung, a common process after one-lung ventilation, could be another contributing factor to structural damage caused by oxidative stress and inflammation.^{164,165} Increased capillary transmural pressure from reversal of hypoxic pulmonary vasoconstriction after re-expansion and decreased pulmonary vascular resistance could mechanically injure the basement membrane of the alveolar–capillary lining.¹⁶⁶

Yes-associated protein 1 (YAP) signaling is a key pathway in the control of cell proliferation, apoptosis, and fate¹⁶⁷ and related to regulation of actin cytoskeleton dynamics¹⁶⁸ and alveolar epithelium repair and regeneration.¹⁶⁹ YAP signaling has been reported to be less activated in static

pulmonary epithelial cells¹⁷⁰ and in atelectatic lung than in normally ventilated lung.¹⁵⁴ Together, these experimental studies suggest the potential role of YAP signaling and its possible use as a treatment target in structural dysfunction during atelectasis.

In line with those findings, microvascular endothelial disruption has been documented in atelectatic rat lung.¹³⁸ Such structural compromise could lead to lung edema,¹⁵⁶ microvascular protein leakage,^{147,171} and even bacterial translocation to the bloodstream,¹⁷² suggesting an additional mechanism contributing to increased lung permeability and decompartmentalization of the lung inflammatory response, increasing the risk for multiorgan dysfunction.¹⁷³ Potential therapies for structural dysfunction, such as $\beta 2$

agonists directed at accelerating fluid clearance attempted in an acute lung injury trial, are examples of treatment targets derived from basic knowledge,¹⁷⁴ which illustrate the relevance of advancing the area.

Ultraprotective ventilation (limiting stress and strain with limited tidal volume and pressure) during extracorporeal membrane oxygenation (ECMO) for respiratory failure^{175–177} is a recently discussed strategy in which the biologic effects of static and dynamic stretch may be relevant. The expected advantages of “lung rest” could benefit from barrier (e.g., epithelial and endothelial cells) protective effects of low cyclic stretch^{178,179} and yet conflict with the damaging effects of lung immobility as well as the injurious effects of large static stretch on alveolar epithelial cells and extracellular matrix.^{180,181} A recent trial reported no association of mechanical ventilation settings during the first 2 days of ECMO with survival of patients with severe lung injury.¹⁸² A possible explanation is that the severity of the inflammatory response in these patients is so high that the ventilatory intervention would not be able to generate a biologic response. Thus, optimal ventilatory settings and length of their application for best lung recovery strategies in ECMO patients, including the best balance between immobility and cyclic load, remains an open question.

Hypoxic Injury. Lung collapse results in local hypoxia, a potent inducer of lung inflammation,¹⁸³ and microvascular injury.¹⁸⁴ Attenuating hypoxia or eliminating atelectasis by lung recruitment reverses lung injury induced by alveolar hypoxia.¹⁷¹ Experimental data suggest that such hypoxia-related lung injury may be associated with NF- κ B-dependent chemokine (C-X-C motif) ligand 1 secretion from lung epithelial cells¹⁴⁶; macrophage recruitment and activation¹⁸³; decreased expression of lung neprilysin (a neutral endopeptidase)¹⁸⁴; and excess reactive oxygen and nitrogen species (superoxide anion radical O₂^{•-} and nitric oxide NO[•]).¹⁸⁵

The hypoxia activated transcription factor hypoxia-inducible factor 1 could be another important regulator in atelectatic tissue associated both with pro- and anti-inflammatory mechanisms.¹⁸⁶ Hypoxia-inducible factor 1 α is increased and activated in nonventilated atelectatic rat lungs,¹⁴⁶ with distinct cellular effects. In myeloid cells, hypoxia-inducible factor 1 α promotes acute inflammatory response through the regulation of glycolytic capacity.¹⁸⁷ In endothelial cells, hypoxia-inducible factor 1 α reduces mitochondrial respiratory capacity and activates vascular inflammation by promoting glycolysis.^{188,189} In contrast, in lung epithelial cells, hypoxia-inducible factor 1 contributes to anti-inflammation¹⁴⁶ and barrier protection.¹⁹⁰

Surfactant Dysfunction. Although surfactant dysfunction produces atelectasis as discussed above, conversely, atelectasis can lead to surfactant dysfunction. Classic studies reported

that surfactant compression beyond 50% of its initial area, as potentially present during atelectasis, could result in film rupture on re-expansion and loss of function,^{191,192} in line with increased surface forces associated with low PEEP (i.e., deaerated lung) during *in vitro* ventilation.¹⁹³ High surface forces in the alveoli causes transudation of proteinaceous fluid from capillaries into alveoli, further contributing to surfactant dysfunction.¹⁹⁴ Such dysfunction after atelectasis has been reinforced by clinical data from patients without cardiopulmonary disease, showing that surfactant phospholipids in bronchoalveolar lavage of atelectatic regions were lower after onset of atelectasis and remained low even after its resolution.¹⁴⁷

Atelectasis-related Pneumonia. Pneumonia is a major postoperative pulmonary complication. Its incidence has been reported as 1.8% in American Society of Anesthesiologists status III patients undergoing noncardiothoracic predominantly abdominal and pelvic surgery,¹⁹⁵ 3.5% after cardiac surgery,¹⁹⁶ and up to 25% after major lung resection.¹⁹⁷

Atelectasis has been often suggested as associated with pneumonia. The biologic compromise of the atelectatic lung immune defenses could facilitate the development of pneumonia, as detailed under “Inflammatory Response” above. Local depletion and dysfunction of surfactant secondary to significant atelectasis or after pulmonary edema could further compromise the anti-infectious response because surfactant possesses antimicrobial properties¹⁹⁸ and enhances macrophage phagocytosis and bacterial clearance.¹⁹⁹ Additionally, mucus plugging or impaired mucus clearance after long periods of atelectasis can increase the risk of infection by compromising mucociliary clearance against organisms entering the lung and trapping them within collapsed regions.^{200,201}

Experimental studies support that atelectasis was associated with larger bacterial growth and pneumonia when bacteria were present or instilled into collapsed lungs.^{172,200,201} Similarly, mechanical ventilation settings facilitating atelectasis (PEEP = 0 cm H₂O) increased lung bacterial burden in rabbits after tracheal bacterial instillation when compared with spontaneously breathing controls.²⁰² Also, after the systemic intravenous injection of bacteria, the susceptibility to bacterial infection of atelectatic regions was greater than that of aerated regions.²⁰⁰ Of note, such effects of atelectasis might not be present when collapsed lung tissue is not exposed to any infectious agent, because atelectasis did not increase the incidence of pneumonia in dogs with noninfected lungs in a historical study.²⁰⁰

Clinical evidence has been more conflicting than such experimental studies. A large trial during major abdominal surgery indicated the high incidence of atelectasis and pneumonia in patients with ventilation settings predisposing to atelectasis (PEEP = 0 cm H₂O).³ However, the specific

role of atelectasis or even an association could not be determined because large tidal volumes were combined with PEEP = 0 cm H₂O, and subsequent trials comparing high vs low PEEP in patients at different risk for alveolar collapse in similar settings did not show an effect of PEEP on postoperative pneumonia.^{203,204} A potential explanation for those findings could be that the short-lasting intraoperative reduction of intraoperative atelectasis might not be enough for a longer-lasting effect in preventing infections through the first 5 to 7 days after surgery. Indeed, use of interventions addressing not only intraoperative but also immediate postoperative lung expansion resulted in less postoperative atelectasis and infectious complications in patients receiving lung expansion, suggesting a clinical effect.²⁰⁵ Such hypothesis generating clinical results together with the basic science and translational findings suggest that interventions to at least minimize atelectasis could be relevant and require further investigation.

Regional Mechanical Injury

Lung tissues are continuously subjected to different mechanical forces associated with lung inflation during spontaneous and mechanical ventilation, as discussed above under “Physiologic Principles of Bronchiolar and Alveolar Expansion.” During atelectasis, lung mechanical forces contributing significantly to lung injury might be ascribed to different biomechanical processes, including cyclic opening and closing, stress concentration, and overdistension of the nonatelectatic lung (fig. 7).

Cyclic Opening and Closing. Cyclic opening and closing of lung units (*i.e.*, bronchioles and alveoli), presumably resulting from the unfavorable balance of forces acting on airways and alveoli, is a frequently cited but still incompletely understood mechanism for lung injury associated with atelectasis. Different processes potentially present during repeated opening and closing have been studied to explain the resulting injury, such as cyclic airway and/or alveolar reopening, the propagation of air–liquid interfaces with production of injurious longitudinal gradients of pressure, and shear stress.

Airways and/or Alveoli Reopening

Histological injury in lungs ventilated with PEEP below the inflection point of the pressure–volume curve (fig. 4), representative of PEEP insufficient to maintain lung units open,²⁰⁶ led to the concept of mechanical trauma caused by cyclic opening and closing. The critical opening pressure of an airway depends directly on airway fluid surface tension (γ) and inversely on airway radius (R ; $P_{crit} = 8.3\gamma/R$).²⁰⁷ Such a relationship suggests a distribution of opening pressures along the airway tree with higher critical pressures and presumably injury from tidal recruitment at smaller airways.

Airway closure has been documented *in vivo* by computed tomography imaging in injured experimental lung models.^{208,209} Cyclic opening and closing of airways results in bronchiolar injury as reported in animal models ventilated with zero²¹⁰ or negative end-expiratory pressure.²¹¹ In addition, repetitive alveolar collapse and expansion, directly visualized in surfactant-deactivated lung using *in vivo* microscope,²¹² produces histologic injury with thickened alveolar walls, significant intra-alveolar edema, and numerous neutrophils.^{212,213} Experiments document significant regional ventilation heterogeneity in poorly aerated regions in healthy lungs comparable with those of humans compatible with intermittent airway closure and reversible with PEEP.²¹⁴ The extent to which cyclic opening and closing occurs in human lungs and contributes to injury remains to be defined.

Surface Forces during Propagation of Gas–Liquid Interfaces

Surface forces can importantly contribute to epithelial injury during ventilation of atelectatic regions and associated opening–closing of airways and alveoli.^{215,216} Secretions, surfactant dysfunction, and alveolar edema affect the fluid lining the airway and can lead to the formation of liquid plugs or liquid bridges in the airway lumen in association with lung collapse. Mechanical or spontaneous ventilation of such airways and underlying alveoli produces the propagation of these gas–liquid interfaces; that is, movement of the liquid plugs/bridges by the incoming air (fig. 7). The mechanical forces acting on the epithelium lining of airways and alveoli resulting from this movement have been advanced as a key mechanism of cell injury in mechanical ventilation of atelectatic regions.^{215,216} The relevance of this mechanism has been experimentally supported in large tidal volume ventilation of normal rat lungs by observation of more wounded epithelial cells when gas–liquid interfaces were present (partial lung instillation of normal saline) than when lungs were either exclusively overdistended or completely saline-filled (*i.e.*, no gas–liquid interface).²¹⁷

Cellular injury produced by propagation of gas–liquid interfaces include cell detachment and necrosis,²¹⁸ cell membrane fracture,²¹⁹ impairment of cell–cell adhesion,²²⁰ and deterioration of cytoskeletal structure.²²¹ Such damage increased with reduced airway compliance²²² and diameter.²¹⁸ The rupture of liquid plugs can also lead to epithelial cell injury caused by fluid mechanical stresses in the vicinity and downstream of plug rupture²¹⁶ with associated inflammatory response.²²³ Different mechanical forces generated during interface propagation and acting on the epithelial cells lining opening airways include pressure and pressure gradients, shear stress, and shear stress gradients (fig. 7), with the *pressure gradient* likely being the primary determinant of mechanical damage.^{215,224}

Surfactant treatment reduces the mechanical stress imparted by the propagation of gas–liquid interfaces.²²⁵ This

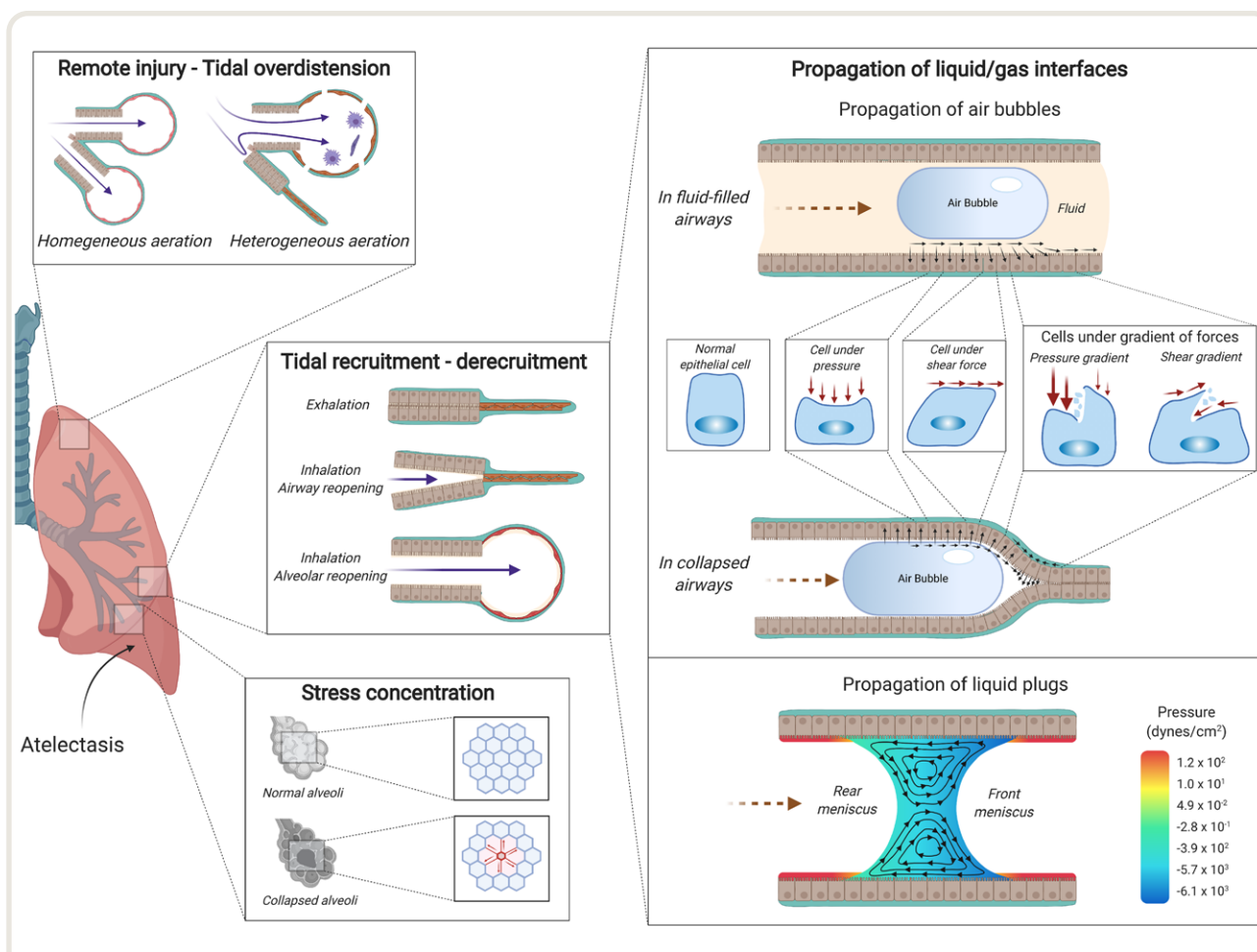


Fig. 7. Atelectasis-associated regional mechanical injury. Airway or alveolar injury can occur during tidal recruitment-derecruitment. Propagation of gas–liquid interfaces is a potential mechanism. During inhalation, air propagates into a fluid-filled airway (top right) or a collapsed airway (middle right), generating mechanical forces at the interface of air bubble and airway with resulting cell deformations due to normal pressure, shear stress, and their gradients. The pressure gradient is likely the major determinant of injury. Propagation of liquid plugs and rupture of the liquid menisci also generate abnormally large mechanical forces in the area of smallest film thickness where the front meniscus converges to a precursor film (bottom right). Stress concentration (bottom left) is another potential mechanism for atelectasis-related lung injury. In normally expanded lungs, the alveoli are ventilated homogeneously. During atelectasis, however, collapsed areas may result in stress concentration, locally multiplying the stress around the atelectatic regions. Atelectasis also leads to the redistribution of tidal volume from atelectatic to aerated areas, resulting in remote tidal overdistension (top left). Copyright (2007) National Academy of Sciences, U.S.A.

is consistent with its success in neonatal use.²²⁶ In adults, failure of surfactant trials may have resulted from inadequate surfactant delivery to the distal airways and alveoli because of low instilled dose volume.²²⁷

Shear Stress

Shear stress is defined as the force divided by the area parallel to the applied force (fig. 7). Cyclic opening and closing of the small airways or alveolar ducts could generate shear stress, acting on the collapsed and surrounding lung.^{215,218} Although frequently mentioned as a common cause of injury during repeated opening and closing, no studies directly assessed shear stress *in vivo*. During the propagation

of gas–liquid interfaces *in vitro*, shear stress at the air bubble cap was estimated as far greater than that in the regions upstream or downstream of the bubble tip.²¹⁵ However, theoretical investigations as detailed above suggested that shear stress is less important than the longitudinal pressure gradient in producing cell injury.^{215,224}

Stress Concentration. Atelectasis-related mechanical injury can also be produced by “stress concentration,” first proposed by Mead *et al.*⁴ It is due to the distribution of mechanical forces in the three-dimensional lung structure around a region whose initially surrounding area is reduced by atelectasis. Stress concentration occurs in normal regions

at the interface between open and closed lung, which are thus exposed to exaggerated stress (e.g., tethering stress described in physiology section) during ventilation (fig. 7).^{228,229}

This mechanism could explain the injury observed around the atelectatic lung tissues, as presented in an *ex vivo* isolated, perfused rat lung model.²³⁰ Acting as a stress concentrator, atelectasis can generate structural alveolar injury and inflammation in the surrounding lung tissue.²³¹ Even microatelectasis can lead to histological epithelial injury caused by stress concentration as reported in a bleomycin-injured rat lung when ventilated with low PEEP and large tidal volume for 3 h.²³² In addition, such stress concentration around atelectasis helps explain the clinical phenomenon of increased local neutrophilic activation at the interface between inflated and noninflated tissue in patients detected by positron emission tomography.²³³

Remote Injury–Tidal Overdistension. Atelectasis leads to loss of aerated lung volume with redistribution of tidal lung volume during ventilation to the remaining smaller aerated lung (fig. 7).¹⁵¹ Thus, regional strain increases in such ventilated areas, with susceptibility to hyperinflation detectable by computed tomography.^{234–236} This hyperinflation of aerated regions could promote higher lung inflammation than atelectasis at comparable low tidal volume and lower driving pressure.²³⁷ Consistent with these considerations, experimental findings in a rat lavage model of dependent atelectasis showed the coexistence of dependent atelectasis and remote nondependent lung injury characterized by distal airway injury and increased alveolar epithelial mRNA expression of inflammatory cytokines (e.g., interleukins 6 and 1 and macrophage inflammatory protein 2).²³⁸ Also, in initially healthy sheep with lung size and heterogeneity comparable to that of humans, receiving protective ventilation in the presence of mild systemic inflammation progressive atelectasis was associated with lung strain increased to areas of high aeration.¹⁵¹ Of note, these regions showed increased inflammation as assessed by positron emission tomography both in large animals¹⁵¹ and in patients with inflamed lungs,²³⁹ suggesting their contribution to ultimate clinical lung injury.

Closing Remarks

The perioperative period is associated with a profound imbalance of the physical forces that maintain, in the awake conditions, the physiologic expansion of the lung. Accordingly, pulmonary atelectasis, most frequently located in the dorso-caudal regions, represents an almost constant feature of general anesthesia. Hypoxemia and lowered respiratory system compliance are classical presentations of atelectasis at the bedside. Prolonged lung collapse and the associated biomechanical processes secondary to the ventilation of a heterogeneously aerated lung may actively

participate in significant lung injury. The biologic response associated with atelectasis, before and after re-expansion, could further compound the injurious process. The impact of intraoperative pulmonary atelectasis on postoperative outcomes such as pneumonia and acute lung injury while presumed is still in need of high-level evidence. The presented information is expected to provide a basis for future inquire and physiologic-based clinical practice. Although the current focus on preventing postoperative pulmonary complications lies on using ventilator strategies to prevent atelectasis or overexpansion of atelectatic lungs, future approaches may take advantage of common or novel perioperative medications, which would address some of the sequelae of significant atelectasis at the cellular and molecular levels.

Acknowledgments

The figures were created with BioRender.com (Toronto, Ontario, Canada).

Research Support

Supported by National Heart, Lung, and Blood Institute, National Institutes of Health (Bethesda, Maryland) grant Nos. R01 HL121228 and UH3 HL140177 (to Dr. Vidal Melo). Dr. Lagier was supported by research grants from Societe Francaise d'Anesthesie Reanimation (Paris, France), European Association of Cardiothoracic Anaesthesiology (Rome, Italy), and Fondation Monahan. Dr. Lee was supported by National Heart, Lung, and Blood Institute, National Institutes of Health grant Nos. R01 HL113022 and HL148781.

Competing Interests

The authors declare no competing interests.

Correspondence

Address correspondence to Dr. Vidal Melo: Massachusetts General Hospital, 55 Fruit Street, Boston, Massachusetts 02114. vidalmelo.marcos@mgh.harvard.edu. ANESTHESIOLOGY's articles are made freely accessible to all readers on www.anesthesiology.org, for personal use only, 6 months from the cover date of the issue.

References

1. Bendixen HH, Hedley-Whyte J, Laver MB: Impaired oxygenation in surgical patients during general anesthesia with controlled ventilation: A concept of atelectasis. *N Engl J Med* 1963; 269:991–6
2. Brismar B, Hedenstierna G, Lundquist H, Strandberg A, Svensson L, Tokics L: Pulmonary densities during anesthesia with muscular relaxation: A proposal of atelectasis. *ANESTHESIOLOGY* 1985; 62:422–8

3. Futier E, Constantin JM, Paugam-Burtz C, Pascal J, Eurin M, Neuschwander A, Marret E, Beaussier M, Gutton C, Lefrant JY, Allaouchiche B, Verzilli D, Leone M, De Jong A, Bazin JE, Pereira B, Jaber S; IMPROVE Study Group: A trial of intraoperative low-tidal-volume ventilation in abdominal surgery. *N Engl J Med* 2013; 369:428–37
4. Mead J, Takishima T, Leith D: Stress distribution in lungs: A model of pulmonary elasticity. *J Appl Physiol* 1970; 28:596–608
5. Burgstaller G, Oehrle B, Gerckens M, White ES, Schiller HB, Eickelberg O: The instructive extracellular matrix of the lung: Basic composition and alterations in chronic lung disease. *Eur Respir J* 2017; 50:1601805
6. Prange HD: Laplace's law and the alveolus: A misconception of anatomy and a misapplication of physics. *Adv Physiol Educ* 2003; 27:34–40
7. Albert RK: The role of ventilation-induced surfactant dysfunction and atelectasis in causing acute respiratory distress syndrome. *Am J Respir Crit Care Med* 2012; 185:702–8
8. Scieurba FC, Rogers RM, Keenan RJ, Slivka WA, Gorcsan J III, Ferson PF, Holbert JM, Brown ML, Landreneau RJ: Improvement in pulmonary function and elastic recoil after lung-reduction surgery for diffuse emphysema. *N Engl J Med* 1996; 334:1095–9
9. Anafi RC, Wilson TA: Airway stability and heterogeneity in the constricted lung. *J Appl Physiol* (1985) 2001; 91:1185–92
10. Paré PD, Mitzner W: Airway-parenchymal interdependence. *Compr Physiol* 2012; 2:1921–35
11. Tawhai MH, Nash MP, Lin CL, Hoffman EA: Supine and prone differences in regional lung density and pleural pressure gradients in the human lung with constant shape. *J Appl Physiol* (1985) 2009; 107:912–20
12. Ito S, Ingenito EP, Brewer KK, Black LD, Parameswaran H, Lutchen KR, Suki B: Mechanics, nonlinearity, and failure strength of lung tissue in a mouse model of emphysema: Possible role of collagen remodeling. *J Appl Physiol* (1985) 2005; 98:503–11
13. Loring SH, Topulos GP, Hubmayr RD: Transpulmonary pressure: The importance of precise definitions and limiting assumptions. *Am J Respir Crit Care Med* 2016; 194:1452–7
14. Hedenstierna G, McCarthy G, Bergström M: Airway closure during mechanical ventilation. *ANESTHESIOLOGY* 1976; 44:114–23
15. Rothen HU, Sporre B, Engberg G, Wegenius G, Hedenstierna G: Airway closure, atelectasis and gas exchange during general anaesthesia. *Br J Anaesth* 1998; 81:681–6
16. Lai-Fook SJ, Rodarte JR: Pleural pressure distribution and its relationship to lung volume and interstitial pressure. *J Appl Physiol* (1985) 1991; 70:967–78
17. Hedenstierna G, Tokics L, Lundquist H, Andersson T, Strandberg A, Brismar B: Phrenic nerve stimulation during halothane anesthesia: Effects of atelectasis. *ANESTHESIOLOGY* 1994; 80:751–60
18. Krayer S, Rehder K, Vettermann J, Didier EP, Ritman EL: Position and motion of the human diaphragm during anesthesia-paralysis. *ANESTHESIOLOGY* 1989; 70:891–8
19. Froese AB, Bryan AC: Effects of anesthesia and paralysis on diaphragmatic mechanics in man. *ANESTHESIOLOGY* 1974; 41:242–55
20. Boriek AM, Rodarte JR: Inferences on passive diaphragm mechanics from gross anatomy. *J Appl Physiol* (1985) 1994; 77:2065–70
21. Hubmayr RD, Sprung J, Nelson S: Determinants of transdiaphragmatic pressure in dogs. *J Appl Physiol* (1985) 1990; 69:2050–6
22. Warner DO, Warner MA, Ritman EL: Atelectasis and chest wall shape during halothane anesthesia. *ANESTHESIOLOGY* 1996; 85:49–59
23. Reber A, Nylund U, Hedenstierna G: Position and shape of the diaphragm: Implications for atelectasis formation. *Anaesthesia* 1998; 53:1054–61
24. Warner DO, Warner MA, Ritman EL: Human chest wall function while awake and during halothane anesthesia: I. Quiet breathing. *ANESTHESIOLOGY* 1995; 82:6–19
25. Hedenstierna G, Tokics L, Reinius H, Rothen HU, Östberg E, Öhrvik J: Higher age and obesity limit atelectasis formation during anaesthesia: An analysis of computed tomography data in 243 subjects. *Br J Anaesth* 2020; 124:336–44
26. Reber A, Engberg G, Sporre B, Kviele L, Rothen HU, Wegenius G, Nylund U, Hedenstierna G: Volumetric analysis of aeration in the lungs during general anaesthesia. *Br J Anaesth* 1996; 76:760–6
27. Hedenstierna G, Strandberg A, Brismar B, Lundquist H, Svensson L, Tokics L: Functional residual capacity, thoracoabdominal dimensions, and central blood volume during general anesthesia with muscle paralysis and mechanical ventilation. *ANESTHESIOLOGY* 1985; 62:247–54
28. Mutoh T, Lamm WJ, Embree LJ, Hildebrandt J, Albert RK: Volume infusion produces abdominal distension, lung compression, and chest wall stiffening in pigs. *J Appl Physiol* (1985) 1992; 72:575–82
29. Lundquist H, Hedenstierna G, Strandberg A, Tokics L, Brismar B: CT-assessment of dependent lung densities in man during general anaesthesia. *Acta Radiol* 1995; 36:626–32
30. Rodarte JR, Hubmayr RD, Stamenovic D, Walters BJ: Regional lung strain in dogs during deflation from total lung capacity. *J Appl Physiol* (1985) 1985; 58:164–72
31. Puybasset L, Cluzel P, Chao N, Slutsky AS, Coriat P, Rouby JJ: A computed tomography scan assessment of regional lung volume in acute lung injury: The CT

- Scan ARDS Study Group. *Am J Respir Crit Care Med* 1998; 158:1644–55
32. Hubmayr RD, Rodarte JR, Walters BJ, Tonelli FM: Regional ventilation during spontaneous breathing and mechanical ventilation in dogs. *J Appl Physiol* (1985) 1987; 63:2467–75
 33. Xin Y, Cereda M, Hamedani H, Martin KT, Tustison NJ, Pourfathi M, Kadlecsek S, Siddiqui S, Amzajerdian F, Connell M, Abate N, Kajanaku A, Duncan I, Gee JC, Rizi RR: Positional therapy and regional pulmonary ventilation. *ANESTHESIOLOGY* 2020; 133:1093–105
 34. Ayoub J, Cohendy R, Prioux J, Ahmaidi S, Bourgeois JM, Dauzat M, Ramonatxo M, Préfaut C: Diaphragm movement before and after cholecystectomy: A sonographic study. *Anesth Analg* 2001; 92:755–61
 35. Spadaro S, Grasso S, Dres M, Fogagnolo A, Dalla Corte F, Tamburini N, Maniscalco P, Cavallesco G, Alvisi V, Stripoli T, De Camillis E, Ragazzi R, Volta CA: Point of care ultrasound to identify diaphragmatic dysfunction after thoracic surgery. *ANESTHESIOLOGY* 2019; 131:266–78
 36. Laghnam D, Lê MP, Srouf A, Monsonogo R, Estagnasié P, Brusset A, Squara P: Diaphragm dysfunction after cardiac surgery: Reappraisal. *J Cardiothorac Vasc Anesth* 2021 [Epub ahead of print]
 37. Ford GT, Whitelaw WA, Rosenal TW, Cruse PJ, Guenter CA: Diaphragm function after upper abdominal surgery in humans. *Am Rev Respir Dis* 1983; 127:431–6
 38. Simonneau G, Vivien A, Sartene R, Kunstlinger F, Samii K, Noviant Y, Duroux P: Diaphragm dysfunction induced by upper abdominal surgery: Role of postoperative pain. *Am Rev Respir Dis* 1983; 128:899–903
 39. Merino-Ramirez MA, Juan G, Ramón M, Cortijo J, Rubio E, Montero A, Morcillo EJ: Electrophysiologic evaluation of phrenic nerve and diaphragm function after coronary bypass surgery: Prospective study of diabetes and other risk factors. *J Thorac Cardiovasc Surg* 2006; 132:530–6, 536.e1–2
 40. Canbaz S, Turgut N, Halici U, Balci K, Ege T, Duran E: Electrophysiological evaluation of phrenic nerve injury during cardiac surgery: A prospective, controlled, clinical study. *BMC Surg* 2004; 4:2
 41. Easton PA, Fitting JW, Arnoux R, Guerraty A, Grassino AE: Recovery of diaphragm function after laparotomy and chronic sonomicrometer implantation. *J Appl Physiol* (1985) 1989; 66:613–21
 42. Duggan J, Drummond GB: Activity of lower intercostal and abdominal muscle after upper abdominal surgery. *Anesth Analg* 1987; 66:852–5
 43. Demoule A, Jung B, Prodanovic H, Molinari N, Chanques G, Coirault C, Matecki S, Duguet A, Similowski T, Jaber S: Diaphragm dysfunction on admission to the intensive care unit: Prevalence, risk factors, and prognostic impact: A prospective study. *Am J Respir Crit Care Med* 2013; 188:213–9
 44. Koo P, Gartman EJ, Sethi JM, McCool FD: Physiology in medicine: Physiological basis of diaphragmatic dysfunction with abdominal hernias: Implications for therapy. *J Appl Physiol* (1985) 2015; 118:142–7
 45. Lal S: Apomorphine in the evaluation of dopaminergic function in man. *Prog Neuropsychopharmacol Biol Psychiatry* 1988; 12:117–64
 46. Morais CCA, Koyama Y, Yoshida T, Plens GM, Gomes S, Lima CAS, Ramos OPS, Pereira SM, Kawaguchi N, Yamamoto H, Uchiyama A, Borges JB, Vidal Melo MF, Tucci MR, Amato MBP, Kavanagh BP, Costa ELV, Fujino Y: High positive end-expiratory pressure renders spontaneous effort noninjurious. *Am J Respir Crit Care Med* 2018; 197:1285–96
 47. Ide T, Kochi T, Isono S, Mizuguchi T: Diaphragmatic activity during isoflurane anaesthesia in dogs. *Acta Anaesthesiol Scand* 1993; 37:253–7
 48. Jalde FC, Jalde F, Sackey PV, Radell PJ, Eksborg S, Wallin MK: Neurally adjusted ventilatory assist feasibility during anaesthesia: A randomised crossover study of two anaesthetics in a large animal model. *Eur J Anaesthesiol* 2016; 33:283–91
 49. Rocco M, Maggi L, Ranieri G, Ferrari G, Gregoretti C, Conti G, DE Blasi RA: Propofol sedation reduces diaphragm activity in spontaneously breathing patients: Ultrasound assessment. *Minerva Anesthesiol* 2017; 83:266–73
 50. Nishina K, Mikawa K, Kodama S, Kagawa T, Uesugi T, Obara H: The effects of enflurane, isoflurane, and intravenous anesthetics on rat diaphragmatic function and fatigability. *Anesth Analg* 2003; 96:1674–8
 51. Cammu G, Schepens T, De Neve N, Wildemeersch D, Foubert L, Jorens PG: Diaphragmatic and intercostal electromyographic activity during neostigmine, sugammadex and neostigmine-sugammadex-enhanced recovery after neuromuscular blockade: A randomised controlled volunteer study. *Eur J Anaesthesiol* 2017; 34:8–15
 52. Eikermann M, Fassbender P, Malhotra A, Takahashi M, Kubo S, Jordan AS, Gautam S, White DP, Chamberlin NL: Unwarranted administration of acetylcholinesterase inhibitors can impair genioglossus and diaphragm muscle function. *ANESTHESIOLOGY* 2007; 107:621–9
 53. Gattinoni L, Caironi P, Cressoni M, Chiumello D, Ranieri VM, Quintel M, Russo S, Patroniti N, Cornejo R, Bugedo G: Lung recruitment in patients with the acute respiratory distress syndrome. *N Engl J Med* 2006; 354:1775–86
 54. Pelosi P, D'Andrea L, Vitale G, Pesenti A, Gattinoni L: Vertical gradient of regional lung inflation in adult respiratory distress syndrome. *Am J Respir Crit Care Med* 1994; 149:8–13
 55. Gattinoni L, Caironi P: Prone positioning: Beyond physiology. *ANESTHESIOLOGY* 2010; 113:1262–4

56. Musch G, Layfield JD, Harris RS, Melo MF, Winkler T, Callahan RJ, Fischman AJ, Venegas JG: Topographical distribution of pulmonary perfusion and ventilation, assessed by PET in supine and prone humans. *J Appl Physiol* (1985) 2002; 93:1841–51
57. Neves FH, Carmona MJ, Auler JO Jr, Rodrigues RR, Rouby JJ, Malbouisson LM: Cardiac compression of lung lower lobes after coronary artery bypass graft with cardiopulmonary bypass. *PLoS One* 2013; 8:e78643
58. Chiumello D, Marino A, Cressoni M, Mietto C, Berto V, Gallazzi E, Chiurazzi C, Lazzerini M, Cadringer P, Quintel M, Gattinoni L: Pleural effusion in patients with acute lung injury: A CT scan study. *Crit Care Med* 2013; 41:935–44
59. Melo MF, Bates JH: Pleural effusion in acute respiratory distress syndrome: Water, water, everywhere, nor any drop to drain. *Crit Care Med* 2013; 41:1133–4
60. Bates JH, Irvin CG: Time dependence of recruitment and derecruitment in the lung: A theoretical model. *J Appl Physiol* (1985) 2002; 93:705–13
61. Hedenstierna G, McCarthy GS: Airway closure and closing pressure during mechanical ventilation. *Acta Anaesthesiol Scand* 1980; 24:299–304
62. Massa CB, Allen GB, Bates JH: Modeling the dynamics of recruitment and derecruitment in mice with acute lung injury. *J Appl Physiol* (1985) 2008; 105:1813–21
63. Gil J, Weibel ER: Morphological study of pressure–volume hysteresis in rat lungs fixed by vascular perfusion. *Respir Physiol* 1972; 15:190–213
64. Cereda M, Xin Y, Emami K, Huang J, Rajaei J, Profka H, Han B, Mongkolwisetwara P, Kadlecsek S, Kuzma NN, Pickup S, Kavanagh BP, Deutschman CS, Rizi RR: Positive end-expiratory pressure increments during anesthesia in normal lung result in hysteresis and greater numbers of smaller aerated airspaces. *ANESTHESIOLOGY* 2013; 119:1402–9
65. Tucci MR, Costa EL, Wellman TJ, Musch G, Winkler T, Harris RS, Venegas JG, Amato MB, Melo MF: Regional lung derecruitment and inflammation during 16 hours of mechanical ventilation in supine healthy sheep. *ANESTHESIOLOGY* 2013; 119:156–65
66. Radford EP Jr: Static mechanical properties of mammalian lungs, *Handbook of Physiology*. Edited by Fenn W. Bethesda, MD, American Physiological Society, 1964, pp 429–49
67. Matsuura S, Shirakami G, Iida H, Tanimoto K, Fukuda K: The effect of sevoflurane on ciliary motility in rat cultured tracheal epithelial cells: A comparison with isoflurane and halothane. *Anesth Analg* 2006; 102:1703–8
68. Feldman KS, Kim E, Czachowski MJ, Wu Y, Lo CW, Zahid M: Differential effect of anesthetics on mucociliary clearance *in vivo* in mice. *Sci Rep* 2021; 11:4896
69. Keller C, Brimacombe J: Bronchial mucus transport velocity in paralyzed anesthetized patients: A comparison of the laryngeal mask airway and cuffed tracheal tube. *Anesth Analg* 1998; 86:1280–2
70. Rehder K, Knopp TJ, Sessler AD, Didier EP: Ventilation–perfusion relationship in young healthy awake and anesthetized–paralyzed man. *J Appl Physiol Respir Environ Exerc Physiol* 1979; 47:745–53
71. West JB: Distribution of blood and gas in lungs. *Phys Med Biol* 1966; 11:357–70
72. Glenny RW: Determinants of regional ventilation and blood flow in the lung. *Intensive Care Med* 2009; 35:1833–42
73. Tokics L, Hedenstierna G, Svensson L, Brismar B, Cederlund T, Lundquist H, Strandberg A: V/Q distribution and correlation to atelectasis in anesthetized paralyzed humans. *J Appl Physiol* (1985) 1996; 81:1822–33
74. Dantzker DR, Wagner PD, West JB: Proceedings: Instability of poorly ventilated lung units during oxygen breathing. *J Physiol* 1974; 242:72P
75. Rothen HU, Sporre B, Engberg G, Wegenius G, Högman M, Hedenstierna G: Influence of gas composition on recurrence of atelectasis after a reexpansion maneuver during general anesthesia. *ANESTHESIOLOGY* 1995; 82:832–42
76. Rothen HU, Sporre B, Engberg G, Wegenius G, Reber A, Hedenstierna G: Prevention of atelectasis during general anaesthesia. *Lancet* 1995; 345:1387–91
77. Joyce CJ, Williams AB: Kinetics of absorption atelectasis during anesthesia: A mathematical model. *J Appl Physiol* (1985) 1999; 86:1116–25
78. Oldham KT, Guice KS, Stetson PS, Wolfe RR: Bacteremia-induced suppression of alveolar surfactant production. *J Surg Res* 1989; 47:397–402
79. Davidson KG, Bersten AD, Barr HA, Dowling KD, Nicholas TE, Doyle IR: Endotoxin induces respiratory failure and increases surfactant turnover and respiration independent of alveolocapillary injury in rats. *Am J Respir Crit Care Med* 2002; 165:1516–25
80. Castiello A, Paterson JF, Shelley SA, Haller EM, Balis JU: Depletion of surfactant tubular myelin with pulmonary dysfunction in a rat model for acute endotoxemia. *Shock* 1994; 2:427–32
81. George CL, White ML, O'Neill ME, Thorne PS, Schwartz DA, Snyder JM: Altered surfactant protein A gene expression and protein metabolism associated with repeat exposure to inhaled endotoxin. *Am J Physiol Lung Cell Mol Physiol* 2003; 285:L1337–44
82. Günther A, Siebert C, Schmidt R, Ziegler S, Grimminger F, Yabut M, Temmesfeld B, Walmrath D, Morr H, Seeger W: Surfactant alterations in severe pneumonia, acute respiratory distress syndrome, and cardiogenic lung edema. *Am J Respir Crit Care Med* 1996; 153:176–84
83. Arias-Díaz J, Vara E, García C, Balibrea JL: Tumor necrosis factor- α -induced inhibition of phosphatidylcholine synthesis by human type II pneumocytes is

- partially mediated by prostaglandins. *J Clin Invest* 1994; 94:244–50
84. Liao DF, Yin NX, Huang J, Ryan SF: Effects of human polymorphonuclear leukocyte elastase upon surfactant proteins *in vitro*. *Biochim Biophys Acta* 1996; 1302:117–28
 85. Ueda T, Ikegami M, Jobe A: Surfactant subtypes: *In vitro* conversion, *in vivo* function, and effects of serum proteins. *Am J Respir Crit Care Med* 1994; 149:1254–9
 86. Prost N de, Costa EL, Wellman T, Musch G, Winkler T, Tucci MR, Harris RS, Venegas JG, Vidal Melo MF: Effects of surfactant depletion on regional pulmonary metabolic activity during mechanical ventilation. *J Appl Physiol* (1985) 2011; 111:1249–58
 87. Prost N de, Feng Y, Wellman T, Tucci MR, Costa EL, Musch G, Winkler T, Harris RS, Venegas JG, Chao W, Vidal Melo MF: ¹⁸F-FDG kinetics parameters depend on the mechanism of injury in early experimental acute respiratory distress syndrome. *J Nucl Med* 2014; 55:1871–7
 88. Govender M, Bihari S, Bersten AD, De Pasquale CG, Lawrence MD, Baker RA, Bennetts J, Dixon DL: Surfactant and lung function following cardiac surgery. *Heart Lung* 2019; 48:55–60
 89. Griese M, Wilnhammer C, Jansen S, Rinker C: Cardiopulmonary bypass reduces pulmonary surfactant activity in infants. *J Thorac Cardiovasc Surg* 1999; 118:237–44
 90. Veldhuizen RA, Tremblay LN, Govindarajan A, van Rozendaal BA, Haagsman HP, Slutsky AS: Pulmonary surfactant is altered during mechanical ventilation of isolated rat lung. *Crit Care Med* 2000; 28:2545–51
 91. Veldhuizen RA, Slutsky AS, Joseph M, McCaig L: Effects of mechanical ventilation of isolated mouse lungs on surfactant and inflammatory cytokines. *Eur Respir J* 2001; 17:488–94
 92. Verbrugge SJ, Böhm SH, Gommers D, Zimmerman LJ, Lachmann B: Surfactant impairment after mechanical ventilation with large alveolar surface area changes and effects of positive end-expiratory pressure. *Br J Anaesth* 1998; 80:360–4
 93. Letsiou E, Kitsioulis E, Nakos G, Lekka ME: Mild stretch activates cPLA₂ in alveolar type II epithelial cells independently through the MEK/ERK and PI3K pathways. *Biochim Biophys Acta* 2011; 1811:370–6
 94. Arold SP, Bartolák-Suki E, Suki B: Variable stretch pattern enhances surfactant secretion in alveolar type II cells in culture. *Am J Physiol Lung Cell Mol Physiol* 2009; 296:L574–81
 95. Hildebran JN, Goerke J, Clements JA: Surfactant release in excised rat lung is stimulated by air inflation. *J Appl Physiol Respir Environ Exerc Physiol* 1981; 51:905–10
 96. Arold SP, Suki B, Alencar AM, Lutchen KR, Ingenito EP: Variable ventilation induces endogenous surfactant release in normal guinea pigs. *Am J Physiol Lung Cell Mol Physiol* 2003; 285:L370–5
 97. Smallwood CD, Boloori-Zadeh P, Silva MR, Gouldstone A: High oxygen concentrations adversely affect the performance of pulmonary surfactant. *Respir Care* 2017; 62:1085–90
 98. Molliex S, Crestani B, Dureuil B, Rolland C, Aubier M, Desmonts JM: Differential effects of isoflurane and i.v. anaesthetic agents on metabolism of alveolar type II cells. *Br J Anaesth* 1999; 82:767–9
 99. Said SI, Avery ME, Davis RK, Banerjee CM, El-Gohary M: Pulmonary surface activity in induced pulmonary edema. *J Clin Invest* 1965; 44:458–64
 100. Nakos G, Pneumatikos J, Tsangaris I, Tellis C, Lekka M: Proteins and phospholipids in BAL from patients with hydrostatic pulmonary edema. *Am J Respir Crit Care Med* 1997; 155:945–51
 101. Egbert LD, Laver MB, Bendixen HH: Intermittent deep breaths and compliance during anesthesia in man. *ANESTHESIOLOGY* 1963; 24:57–60
 102. Laver MB, Morgan J, Bendixen HH, Radford EP Jr: Lung volume, compliance, and arterial oxygen tensions during controlled ventilation. *J Appl Physiol* 1964; 19:725–33
 103. Mead J, Collier C: Relation of volume history of lungs to respiratory mechanics in anesthetized dogs. *J Appl Physiol* 1959; 14:669–78
 104. Behazin N, Jones SB, Cohen RI, Loring SH: Respiratory restriction and elevated pleural and esophageal pressures in morbid obesity. *J Appl Physiol* (1985) 2010; 108:212–8
 105. Neto AS, Hemmes SN, Barbas CS, Beiderlinden M, Fernandez-Bustamante A, Futier E, Gajic O, El-Tahan MR, Ghamdi AA, Günay E, Jaber S, Kokulu S, Kozian A, Licker M, Lin WQ, Maslow AD, Memtsoudis SG, Reis Miranda D, Moine P, Ng T, Paparella D, Ranieri VM, Scavonetto F, Schilling T, Selmo G, Severgnini P, Sprung J, Sundar S, Talmor D, Treschan T, Unzueta C, Weingarten TN, Wolthuis EK, Wrigge H, Amato MB, Costa EL, de Abreu MG, Pelosi P, Schultz MJ; PROVE Network Investigators: Association between driving pressure and development of postoperative pulmonary complications in patients undergoing mechanical ventilation for general anaesthesia: A meta-analysis of individual patient data. *Lancet Respir Med* 2016; 4:272–80
 106. Ma B, Bates JH: Mechanical interactions between adjacent airways in the lung. *J Appl Physiol* (1985) 2014; 116:628–34
 107. Bonatti G, Robba C, Ball L, Silva PL, Rocco PRM, Pelosi P: Controversies when using mechanical ventilation in obese patients with and without acute distress respiratory syndrome. *Expert Rev Respir Med* 2019; 13:471–9

108. Nunn JF, Bergman NA, Coleman AJ: Factors influencing the arterial oxygen tension during anaesthesia with artificial ventilation. *Br J Anaesth* 1965; 37:898–914
109. Bendixen HH, Bullwinkel B, Hedley-Whyte J, Laver MB: Atelectasis and shunting during spontaneous ventilation in anesthetized patients. *ANESTHESIOLOGY* 1964; 25:297–301
110. Tokics L, Hedenstierna G, Strandberg A, Brismar B, Lundquist H: Lung collapse and gas exchange during general anesthesia: Effects of spontaneous breathing, muscle paralysis, and positive end-expiratory pressure. *ANESTHESIOLOGY* 1987; 66:157–67
111. Magnusson L, Zemgulis V, Wicky S, Tydén H, Thelin S, Hedenstierna G: Atelectasis is a major cause of hypoxemia and shunt after cardiopulmonary bypass: An experimental study. *ANESTHESIOLOGY* 1997; 87:1153–63
112. Magnusson L, Zemgulis V, Tenling A, Wernlund J, Tydén H, Thelin S, Hedenstierna G: Use of a vital capacity maneuver to prevent atelectasis after cardiopulmonary bypass: An experimental study. *ANESTHESIOLOGY* 1998; 88:134–42
113. Wagner PD, Dantzker DR, Dueck R, Clausen JL, West JB: Ventilation–perfusion inequality in chronic obstructive pulmonary disease. *J Clin Invest* 1977; 59:203–16
114. Carvalho AR, Ichinose F, Schettino IA, Hess D, Rojas J, Giannella-Neto A, Agnihotri A, Walker J, MacGillivray TE, Vidal Melo MF: Tidal lung recruitment and exhaled nitric oxide during coronary artery bypass grafting in patients with and without chronic obstructive pulmonary disease. *Lung* 2011; 189:499–509
115. Nagasaka Y, Bhattacharya J, Nanjo S, Gropper MA, Staub NC: Micropuncture measurement of lung microvascular pressure profile during hypoxia in cats. *Circ Res* 1984; 54:90–5
116. von Euler US, Liljestrand G: Observations on the pulmonary arterial blood pressure in the cat. *Acta Physiol Scand* 1946; 12:301–20
117. Wang L, Yin J, Nickles HT, Ranke H, Tabuchi A, Hoffmann J, Tabeling C, Barbosa-Sicard E, Chanson M, Kwak BR, Shin HS, Wu S, Isakson BE, Witzernath M, de Wit C, Fleming I, Kuppe H, Kuebler WM: Hypoxic pulmonary vasoconstriction requires connexin 40-mediated endothelial signal conduction. *J Clin Invest* 2012; 122:4218–30
118. Talbot NP, Balanos GM, Dorrington KL, Robbins PA: Two temporal components within the human pulmonary vascular response to approximately 2h of isocapnic hypoxia. *J Appl Physiol* (1985) 2005; 98:1125–39
119. Glasser SA, Domino KB, Lindgren L, Parcella P, Marshall C, Marshall BE: Pulmonary blood pressure and flow during atelectasis in the dog. *ANESTHESIOLOGY* 1983; 58:225–31
120. Lumb AB, Slinger P: Hypoxic pulmonary vasoconstriction: Physiology and anesthetic implications. *ANESTHESIOLOGY* 2015; 122:932–46
121. Morrell NW, Nijran KS, Biggs T, Seed WA: Magnitude and time course of acute hypoxic pulmonary vasoconstriction in man. *Respir Physiol* 1995; 100:271–81
122. McCormack DG, Paterson NA: Loss of hypoxic pulmonary vasoconstriction in chronic pneumonia is not mediated by nitric oxide. *Am J Physiol* 1993; 265:H1523–8
123. Pandolfi R, Barreira B, Moreno E, Lara-Acedo V, Morales-Cano D, Martínez-Ramas A, de Olaiz Navarro B, Herrero R, Lorente JÁ, Cogolludo Á, Pérez-Vizcaíno F, Moreno L: Role of acid sphingomyelinase and IL-6 as mediators of endotoxin-induced pulmonary vascular dysfunction. *Thorax* 2017; 72:460–71
124. Wepler M, Beloiartsev A, Buswell MD, Panigrahy D, Malhotra R, Buys ES, Radermacher P, Ichinose F, Bloch DB, Zapol WM: Soluble epoxide hydrolase deficiency or inhibition enhances murine hypoxic pulmonary vasoconstriction after lipopolysaccharide challenge. *Am J Physiol Lung Cell Mol Physiol* 2016; 311:L1213–21
125. Fischer LG, Freise H, Hilpert JH, Wendholt D, Lauer S, Van Aken H, Sielenkämper AW: Modulation of hypoxic pulmonary vasoconstriction is time and nitric oxide dependent in a peritonitis model of sepsis. *Intensive Care Med* 2004; 30:1821–8
126. Simonneau G, Escourrou P, Duroux P, Lockhart A: Inhibition of hypoxic pulmonary vasoconstriction by nifedipine. *N Engl J Med* 1981; 304:1582–5
127. Marshall BE, Marshall C, Benumof J, Saidman LJ: Hypoxic pulmonary vasoconstriction in dogs: Effects of lung segment size and oxygen tension. *J Appl Physiol Respir Environ Exerc Physiol* 1981; 51:1543–51
128. Pagel PS, Fu JL, Damask MC, Davis RF, Samuelson PN, Howie MB, Wartier DC: Desflurane and isoflurane produce similar alterations in systemic and pulmonary hemodynamics and arterial oxygenation in patients undergoing one-lung ventilation during thoracotomy. *Anesth Analg* 1998; 87:800–7
129. Kerbaul F, Bellezza M, Guidon C, Roussel L, Imbert M, Carpentier JP, Auffray JP: Effects of sevoflurane on hypoxic pulmonary vasoconstriction in anesthetized piglets. *Br J Anaesth* 2000; 85:440–5
130. Benumof JL, Augustine SD, Gibbons JA: Halothane and isoflurane only slightly impair arterial oxygenation during one-lung ventilation in patients undergoing thoracotomy. *ANESTHESIOLOGY* 1987; 67:910–5
131. McCann UG II, Schiller HJ, Gatto LA, Steinberg JM, Carney DE, Nieman GF: Alveolar mechanics alter

- hypoxic pulmonary vasoconstriction. *Crit Care Med* 2002; 30:1315–21
132. Van Keer L, Van Aken H, Vandermeersch E, Vermaut G, Lerut T: Propofol does not inhibit hypoxic pulmonary vasoconstriction in humans. *J Clin Anesth* 1989; 1:284–8
 133. Nakayama M, Murray PA: Ketamine preserves and propofol potentiates hypoxic pulmonary vasoconstriction compared with the conscious state in chronically instrumented dogs. *ANESTHESIOLOGY* 1999; 91:760–71
 134. Bjertnaes L, Hauge A, Kriz M: Hypoxia-induced pulmonary vasoconstriction: Effects of fentanyl following different routes of administration. *Acta Anaesthesiol Scand* 1980; 24:53–7
 135. Abe K, Shimizu T, Takashina M, Shiozaki H, Yoshiya I: The effects of propofol, isoflurane, and sevoflurane on oxygenation and shunt fraction during one-lung ventilation. *Anesth Analg* 1998; 87:1164–9
 136. Tenling A, Hachenberg T, Tydén H, Wegenius G, Hedenstierna G: Atelectasis and gas exchange after cardiac surgery. *ANESTHESIOLOGY* 1998; 89:371–8
 137. Kiely DG, Cargill RI, Lipworth BJ: Acute hypoxic pulmonary vasoconstriction in man is attenuated by type I angiotensin II receptor blockade. *Cardiovasc Res* 1995; 30:875–80
 138. Duggan M, McCaul CL, McNamara PJ, Engelberts D, Ackerley C, Kavanagh BP: Atelectasis causes vascular leak and lethal right ventricular failure in uninjured rat lungs. *Am J Respir Crit Care Med* 2003; 167:1633–40
 139. Schmitt JM, Vieillard-Baron A, Augarde R, Prin S, Page B, Jardin F: Positive end-expiratory pressure titration in acute respiratory distress syndrome patients: Impact on right ventricular outflow impedance evaluated by pulmonary artery Doppler flow velocity measurements. *Crit Care Med* 2001; 29:1154–8
 140. Longo S, Siri J, Acosta C, Palencia A, Echegaray A, Chiotti I, Parisi A, Ricci L, Natal M, Suarez-Sipmann F, Tusman G: Lung recruitment improves right ventricular performance after cardiopulmonary bypass: A randomised controlled trial. *Eur J Anaesthesiol* 2017; 34:66–74
 141. Canada E, Benumof JL, Tousdale FR: Pulmonary vascular resistance correlates in intact normal and abnormal canine lungs. *Crit Care Med* 1982; 10:719–23
 142. Hughes JM, Glazier JB, Maloney JE, West JB: Effect of extra-alveolar vessels on distribution of blood flow in the dog lung. *J Appl Physiol* 1968; 25:701–12
 143. Wakabayashi K, Wilson MR, Tatham KC, O’Dea KP, Takata M: Volutrauma, but not atelectrauma, induces systemic cytokine production by lung-margined monocytes. *Crit Care Med* 2014; 42:e49–57
 144. Tojo K, Nagamine Y, Yazawa T, Mihara T, Baba Y, Ota S, Goto T, Kurahashi K: Atelectasis causes alveolar hypoxia-induced inflammation during uneven mechanical ventilation in rats. *ICMx* 2015; 3:18
 145. de la Gala F, Piñeiro P, Garutti I, Reyes A, Olmedilla L, Cruz P, Duque P, Casanova J, Rancan L, Benito P, Vara E: Systemic and alveolar inflammatory response in the dependent and nondependent lung in patients undergoing lung resection surgery: A prospective observational study. *Eur J Anaesthesiol* 2015; 32:872–80
 146. Komatsu Y, Yamamoto H, Tsushima K, Furuya S, Yoshikawa S, Yasuo M, Kubo K, Yamazaki Y, Hasegawa J, Eguchi T, Kondo R, Yoshida K, Koizumi T: Increased interleukin-8 in epithelial lining fluid of collapsed lungs during one-lung ventilation for thoracotomy. *Inflammation* 2012; 35:1844–50
 147. Nakos G, Tsangaris H, Liokatis S, Kitsioulis E, Lekka ME: Ventilator-associated pneumonia and atelectasis: Evaluation through bronchoalveolar lavage fluid analysis. *Intensive Care Med* 2003; 29:555–63
 148. Zeng C, Motta-Ribeiro GC, Hinoshita T, Lessa MA, Winkler T, Grogg K, Kingston NM, Hutchinson JN, Sholl LM, Fang X, Varelas X, Layne MD, Baron RM, Vidal Melo MF: Lung atelectasis promotes immune and barrier dysfunction as revealed by transcriptome sequencing in female sheep. *ANESTHESIOLOGY* 2020; 133:1060–76
 149. Nguyen DM, Mulder DS, Shennib H: Altered cellular immune function in the atelectatic lung. *Ann Thorac Surg* 1991; 51:76–80
 150. Sivriköz MC, Tunçözgür B, Cekmen M, Bakir K, Meram I, Koçer E, Cengiz B, Elbeyli L: The role of tissue reperfusion in the reexpansion injury of the lungs. *Eur J Cardiothorac Surg* 2002; 22:721–7
 151. Kisala JM, Ayala A, Stephan RN, Chaudry IH: A model of pulmonary atelectasis in rats: Activation of alveolar macrophage and cytokine release. *Am J Physiol* 1993; 264:R610–4
 152. Shennib H, Mulder DS, Chiu RC: The effects of pulmonary atelectasis and reexpansion on lung cellular immune defenses. *Arch Surg* 1984; 119:274–7
 153. Sugasawa Y, Yamaguchi K, Kumakura S, Murakami T, Suzuki K, Nagaoka I, Inada E: Effects of sevoflurane and propofol on pulmonary inflammatory responses during lung resection. *J Anesth* 2012; 26:62–9
 154. De Conno E, Steurer MP, Wittlinger M, Zalunardo MP, Weder W, Schneiter D, Schimmer RC, Klaghofer R, Neff TA, Schmid ER, Spahn DR, Z’graggen BR, Urner M, Beck-Schimmer B: Anesthetic-induced improvement of the inflammatory response to one-lung ventilation. *ANESTHESIOLOGY* 2009; 110:1316–26
 155. Motta-Ribeiro GC, Hashimoto S, Winkler T, Baron RM, Grogg K, Paula LFSC, Santos A, Zeng C, Hibbert K, Harris RS, Bajwa E, Vidal Melo MF: Deterioration of regional lung strain and inflammation during

- early lung injury. *Am J Respir Crit Care Med* 2018; 198:891–902
156. Gao W, Liu DD, Li D, Cui GX: Effect of therapeutic hypercapnia on inflammatory responses to one-lung ventilation in lobectomy patients. *ANESTHESIOLOGY* 2015; 122:1235–52
 157. Bobba CM, Fei Q, Shukla V, Lee H, Patel P, Putman RK, Spitzer C, Tsai M, Wewers MD, Lee RJ, Christman JW, Ballinger MN, Ghadiali SN, Englert JA: Nanoparticle delivery of microRNA-146a regulates mechanotransduction in lung macrophages and mitigates injury during mechanical ventilation. *Nat Commun* 2021; 12:289
 158. Bartolák-Suki E, Imsirovic J, Parameswaran H, Wellman TJ, Martinez N, Allen PG, Frey U, Suki B: Fluctuation-driven mechanotransduction regulates mitochondrial-network structure and function. *Nat Mater* 2015; 14:1049–57
 159. Birukova AA, Rios A, Birukov KG: Long-term cyclic stretch controls pulmonary endothelial permeability at translational and post-translational levels. *Exp Cell Res* 2008; 314:3466–77
 160. Birukov KG, Jacobson JR, Flores AA, Ye SQ, Birukova AA, Verin AD, Garcia JG: Magnitude-dependent regulation of pulmonary endothelial cell barrier function by cyclic stretch. *Am J Physiol Lung Cell Mol Physiol* 2003; 285:L785–97
 161. Birukova AA, Moldobaeva N, Xing J, Birukov KG: Magnitude-dependent effects of cyclic stretch on HGF- and VEGF-induced pulmonary endothelial remodeling and barrier regulation. *Am J Physiol Lung Cell Mol Physiol* 2008; 295:L612–23
 162. Lee JW, Fang X, Dolganov G, Fremont RD, Bastarache JA, Ware LB, Matthay MA: Acute lung injury edema fluid decreases net fluid transport across human alveolar epithelial type II cells. *J Biol Chem* 2007; 282:24109–19
 163. Mulivor AW, Lipowsky HH: Inflammation- and ischemia-induced shedding of venular glycocalyx. *Am J Physiol Heart Circ Physiol* 2004; 286:H1672–80
 164. Jackson RM, Veal CF, Alexander CB, Brannen AL, Fulmer JD: Re-expansion pulmonary edema: A potential role for free radicals in its pathogenesis. *Am Rev Respir Dis* 1988; 137:1165–71
 165. Goldman G, Welbourn R, Rothlein R, Wiles M, Kobzik L, Valeri CR, Shepro D, Hechtman HB: Adherent neutrophils mediate permeability after atelectasis. *Ann Surg* 1992; 216:372–80
 166. Sue RD, Matthay MA, Ware LB: Hydrostatic mechanisms may contribute to the pathogenesis of human re-expansion pulmonary edema. *Intensive Care Med* 2004; 30:1921–6
 167. Varelas X: The Hippo pathway effectors TAZ and YAP in development, homeostasis and disease. *Development* 2014; 141:1614–26
 168. Kim J, Kim YH, Kim J, Park DY, Bae H, Lee DH, Kim KH, Hong SP, Jang SP, Kubota Y, Kwon YG, Lim DS, Koh GY: YAP/TAZ regulates sprouting angiogenesis and vascular barrier maturation. *J Clin Invest* 2017; 127:3441–61
 169. LaCanna R, Liccardo D, Zhang P, Tragesser L, Wang Y, Cao T, Chapman HA, Morrisey EE, Shen H, Koch WJ, Kosmider B, Wolfson MR, Tian Y: Yap/Taz regulate alveolar regeneration and resolution of lung inflammation. *J Clin Invest* 2019; 129:2107–22
 170. Liu Z, Wu H, Jiang K, Wang Y, Zhang W, Chu Q, Li J, Huang H, Cai T, Ji H, Yang C, Tang N: MAPK-mediated YAP activation controls mechanical-tension-induced pulmonary alveolar regeneration. *Cell Rep* 2016; 16:1810–9
 171. Duggan M, McNamara PJ, Engelberts D, Pace-Asciak C, Babyn P, Post M, Kavanagh BP: Oxygen attenuates atelectasis-induced injury in the *in vivo* rat lung. *ANESTHESIOLOGY* 2005; 103:522–31
 172. Kaam AH van, Lachmann RA, Herting E, De Jaegere A, Iwaarden F van, Noorduyn LA, Kok JH, Haitsma JJ, Lachmann B: Reducing atelectasis attenuates bacterial growth and translocation in experimental pneumonia. *Am J Respir Crit Care Med* 2004; 169:1046–53
 173. Gando S, Fujishima S, Saitoh D, Shiraishi A, Yamakawa K, Kushimoto S, Ogura H, Abe T, Mayumi T, Sasaki J, Kotani J, Takeyama N, Tsuruta R, Takuma K, Yamashita N, Shiraishi SI, Ikeda H, Shiino Y, Tarui T, Nakada TA, Hifumi T, Otomo Y, Okamoto K, Sakamoto Y, Hagiwara A, Masuno T, Ueyama M, Fujimi S, Umemura Y; Japanese Association for Acute Medicine (JAAM) Focused Outcomes Research in Emergency Care in Acute Respiratory Distress Syndrome, Sepsis and Trauma (FORECAST) Study Group: The significance of disseminated intravascular coagulation on multiple organ dysfunction during the early stage of acute respiratory distress syndrome. *Thromb Res* 2020; 191:15–21
 174. National Heart, Lung, and Blood Institute Acute Respiratory Distress Syndrome (ARDS) Clinical Trials Network, Matthay MA, Brower RG, Carson S, Douglas IS, Eisner M, Hite D, Holets S, Kallet RH, Liu KD, MacIntyre N, Moss M, Schoenfeld D, Steingrub J, Thompson BT: Randomized, placebo-controlled clinical trial of an aerosolized β_2 -agonist for treatment of acute lung injury. *Am J Respir Crit Care Med* 2011; 184:561–8
 175. Marhong JD, Telesnicki T, Munshi L, Del Sorbo L, Detsky M, Fan E: Mechanical ventilation during extracorporeal membrane oxygenation: An international survey. *Ann Am Thorac Soc* 2014; 11:956–61
 176. Brodie D, Bacchetta M: Extracorporeal membrane oxygenation for ARDS in adults. *N Engl J Med* 2011; 365:1905–14

177. Peek GJ, Mugford M, Tiruvoipati R, Wilson A, Allen E, Thalany MM, Hibbert CL, Truesdale A, Clemens F, Cooper N, Firmin RK, Elbourne D; CESAR trial collaboration: Efficacy and economic assessment of conventional ventilatory support *versus* extracorporeal membrane oxygenation for severe adult respiratory failure (CESAR): A multicentre randomised controlled trial. *Lancet* 2009; 374:1351–63
178. Birukova AA, Chatchavalvanich S, Rios A, Kawkitinarong K, Garcia JG, Birukov KG: Differential regulation of pulmonary endothelial monolayer integrity by varying degrees of cyclic stretch. *Am J Pathol* 2006; 168:1749–61
179. Ke Y, Karki P, Zhang C, Li Y, Nguyen T, Birukov KG, Birukova AA: Mechanosensitive Rap1 activation promotes barrier function of lung vascular endothelium under cyclic stretch. *Mol Biol Cell* 2019; 30:959–74
180. Tschumperlin DJ, Oswari J, Margulies AS: Deformation-induced injury of alveolar epithelial cells: Effect of frequency, duration, and amplitude. *Am J Respir Crit Care Med* 2000; 162:357–62
181. Jesudason R, Black L, Majumdar A, Stone P, Suki B: Differential effects of static and cyclic stretching during elastase digestion on the mechanical properties of extracellular matrices. *J Appl Physiol* (1985) 2007; 103:803–11
182. Schmidt M, Pham T, Arcadipane A, Agerstrand C, Ohshimo S, Pellegrino V, Vuylsteke A, Guervilly C, McGuinness S, Pierard S, Breeding J, Stewart C, Ching SSW, Camuso JM, Stephens RS, King B, Herr D, Schultz MJ, Neuville M, Zogheib E, Mira JP, Rozé H, Pierrot M, Tobin A, Hodgson C, Chevret S, Brodie D, Combes A: Mechanical ventilation management during extracorporeal membrane oxygenation for acute respiratory distress syndrome: An international multicenter prospective cohort. *Am J Respir Crit Care Med* 2019; 200:1002–12
183. Madjdpour C, Jewell UR, Kneller S, Ziegler U, Schwendener R, Booy C, Kläusli L, Pasch T, Schimmer RC, Beck-Schimmer B: Decreased alveolar oxygen induces lung inflammation. *Am J Physiol Lung Cell Mol Physiol* 2003; 284:L360–7
184. Carpenter TC, Stenmark KR: Hypoxia decreases lung neprilysin expression and increases pulmonary vascular leak. *Am J Physiol Lung Cell Mol Physiol* 2001; 281:L941–8
185. Heerdt PM, Stowe DF: Single-lung ventilation and oxidative stress: A different perspective on a common practice. *Curr Opin Anaesthesiol* 2017; 30:42–9
186. Vohwinkel CU, Hoegl S, Eltzhig HK: Hypoxia signaling during acute lung injury. *J Appl Physiol* (1985) 2015; 119:1157–63
187. Cramer T, Yamanishi Y, Clausen BE, Förster I, Pawlinski R, Mackman N, Haase VH, Jaenisch R, Corr M, Nizet V, Firestein GS, Gerber HP, Ferrara N, Johnson RS: HIF-1 α is essential for myeloid cell-mediated inflammation. *Cell* 2003; 112:645–57
188. Feng S, Bowden N, Fragiadaki M, Souilhol C, Hsiao S, Mahmoud M, Allen S, Pirri D, Ayllon BT, Akhtar S, Thompson AAR, Jo H, Weber C, Ridger V, Schober A, Evans PC: Mechanical activation of hypoxia-inducible factor 1 α drives endothelial dysfunction at atheroprone sites. *Arterioscler Thromb Vasc Biol* 2017; 37:2087–101
189. Wu D, Huang RT, Hamanaka RB, Krause M, Oh MJ, Kuo CH, Nigdelioglu R, Meliton AY, Witt L, Dai G, Civelek M, Prabhakar NR, Fang Y, Mutlu GM: HIF-1 α is required for disturbed flow-induced metabolic reprogramming in human and porcine vascular endothelium. *eLife* 2017; 6:e25217
190. Olson N, Hristova M, Heintz NH, Lounsbury KM, van der Vliet A: Activation of hypoxia-inducible factor-1 protects airway epithelium against oxidant-induced barrier dysfunction. *Am J Physiol Lung Cell Mol Physiol* 2011; 301:L993–L1002
191. Brown ES, Johnson RP, Clements JA: Pulmonary surface tension. *J Appl Physiol* 1959; 14:717–20
192. Levine BE, Johnson RP: Effects of atelectasis on pulmonary surfactant and quasi-static lung mechanics. *J Appl Physiol* 1965; 20:859–64
193. Faridy EE, Permutt S, Riley RL: Effect of ventilation on surface forces in excised dogs' lungs. *J Appl Physiol* 1966; 21:1453–62
194. Tausch HW: Treatment of acute (adult) respiratory distress syndrome: The holy grail of surfactant therapy. *Biol Neonate* 2000; 77 (Suppl 1):2–8
195. Fernandez-Bustamante A, Frenzl G, Sprung J, Kor DJ, Subramaniam B, Martinez Ruiz R, Lee JW, Henderson WG, Moss A, Mehdiratta N, Colwell MM, Bartels K, Kolodzie K, Giquel J, Vidal Melo MF: Postoperative pulmonary complications, early mortality, and hospital stay following noncardiothoracic surgery: A multicenter study by the perioperative research network investigators. *JAMA Surg* 2017; 152:157–66
196. Allou N, Allyn J, Snauwaert A, Welsch C, Lucet JC, Kortbaoui R, Desmard M, Augustin P, Montravers P: Postoperative pneumonia following cardiac surgery in non-ventilated patients *versus* mechanically ventilated patients: Is there any difference? *Crit Care* 2015; 19:116
197. Schussler O, Alifano M, Dermine H, Strano S, Casetta A, Sepulveda S, Chafik A, Coignard S, Rabbat A, Regnard JF: Postoperative pneumonia after major lung resection. *Am J Respir Crit Care Med* 2006; 173:1161–9
198. Wu H, Kuzmenko A, Wan S, Schaffer L, Weiss A, Fisher JH, Kim KS, McCormack FX: Surfactant proteins A and D inhibit the growth of Gram-negative bacteria by increasing membrane permeability. *J Clin Invest* 2003; 111:1589–602

199. LeVine AM, Kurak KE, Bruno MD, Stark JM, Whitsett JA, Korfhagen TR: Surfactant protein-A–deficient mice are susceptible to *Pseudomonas aeruginosa* infection. *Am J Respir Cell Mol Biol* 1998; 19:700–8
200. Shields RT Jr: Pathogenesis of postoperative pulmonary atelectasis: An experimental study. *Arch Surg* 1949; 58:489–503
201. Drinkwater DC Jr, Wittnich C, Mulder DS, Richards GK, Chiu RC: Mechanical and cellular bacterial clearance in lung atelectasis. *Ann Thorac Surg* 1981; 32:235–43
202. Charles PE, Martin L, Etienne M, Croisier D, Piroth L, Lequeu C, Pugin J, Portier H, Chavanet P: Influence of positive end-expiratory pressure (PEEP) on histopathological and bacteriological aspects of pneumonia during low tidal volume mechanical ventilation. *Intensive Care Med* 2004; 30:2263–70
203. PROVE Network Investigators for the Clinical Trial Network of the European Society of Anaesthesiology, Hemmes SNT, Gama de Abreu M, Pelosi P, Schultz MJ: High *versus* low positive end-expiratory pressure during general anaesthesia for open abdominal surgery (PROVHILO trial): A multicentre randomised controlled trial. *Lancet* 2014; 384:495–503
204. Writing Committee for the PROBESE Collaborative Group of the PROtective VEntilation Network (PROVenet) for the Clinical Trial Network of the European Society of Anaesthesiology, Bluth T, Serpa Neto A, Schultz MJ, Pelosi P, Gama de Abreu M: Effect of intraoperative high positive end-expiratory pressure (PEEP) with recruitment maneuvers *vs.* low PEEP on postoperative pulmonary complications in obese patients: A randomized clinical trial. *JAMA* 2019; 321:2292
205. Ferrando C, Soro M, Unzueta C, Suarez-Sipmann F, Canet J, Librero J, Pozo N, Peiró S, Llombart A, León I, India I, Aldecoa C, Díaz-Cambronero O, Pestaña D, Redondo FJ, Garutti I, Balust J, García JI, Ibáñez M, Granell M, Rodríguez A, Gallego L, de la Matta M, Gonzalez R, Brunelli A, García J, Rovira L, Barrios F, Torres V, Hernández S, Gracia E, Giné M, García M, García N, Miguel L, Sánchez S, Piñeiro P, Pujol R, García-Del-Valle S, Valdivia J, Hernández MJ, Padrón O, Colás A, Puig J, Azparren G, Tusman G, Villar J, Belda J; Individualized Perioperative Open-lung VEntilation (iPROVE) Network: Individualised perioperative open-lung approach *versus* standard protective ventilation in abdominal surgery (iPROVE): A randomised controlled trial. *Lancet Respir Med* 2018; 6:193–203
206. Muscedere JG, Mullen JB, Gan K, Slutsky AS: Tidal ventilation at low airway pressures can augment lung injury. *Am J Respir Crit Care Med* 1994; 149:1327–34
207. Naureckas ET, Dawson CA, Gerber BS, Gaver DP III, Gerber HL, Linehan JH, Solway J, Samsel RW: Airway reopening pressure in isolated rat lungs. *J Appl Physiol* (1985) 1994; 76:1372–7
208. Broche L, Pisa P, Porra L, Degrugilliers L, Bravin A, Pellegrini M, Borges JB, Perchiazzi G, Larsson A, Hedenstierna G, Bayat S: Individual airway closure characterized *in vivo* by phase-contrast CT imaging in injured rabbit lung. *Crit Care Med* 2019; 47:e774–81
209. Derosa S, Borges JB, Segelsjö M, Tannoia A, Pellegrini M, Larsson A, Perchiazzi G, Hedenstierna G: Reabsorption atelectasis in a porcine model of ARDS: Regional and temporal effects of airway closure, oxygen, and distending pressure. *J Appl Physiol* (1985) 2013; 115:1464–73
210. D’Angelo E, Pecchiari M, Gentile G: Dependence of lung injury on surface tension during low-volume ventilation in normal open-chest rabbits. *J Appl Physiol* (1985) 2007; 102:174–82
211. D’Angelo E, Koutsoukou A, Della Valle P, Gentile G, Pecchiari M: Cytokine release, small airway injury, and parenchymal damage during mechanical ventilation in normal open-chest rats. *J Appl Physiol* (1985) 2008; 104:41–9
212. Steinberg JM, Schiller HJ, Halter JM, Gatto LA, Lee HM, Pavone LA, Nieman GF: Alveolar instability causes early ventilator-induced lung injury independent of neutrophils. *Am J Respir Crit Care Med* 2004; 169:57–63
213. Musch G, Venegas JG, Bellani G, Winkler T, Schroeder T, Petersen B, Harris RS, Melo MF: Regional gas exchange and cellular metabolic activity in ventilator-induced lung injury. *ANESTHESIOLOGY* 2007; 106:723–35
214. Wellman TJ, Winkler T, Costa EL, Musch G, Harris RS, Venegas JG, Vidal Melo MF: Effect of regional lung inflation on ventilation heterogeneity at different length scales during mechanical ventilation of normal sheep lungs. *J Appl Physiol* (1985) 2012; 113:947–57
215. Bilek AM, Dee KC, Gaver DP III: Mechanisms of surface-tension-induced epithelial cell damage in a model of pulmonary airway reopening. *J Appl Physiol* (1985) 2003; 94:770–83
216. Huh D, Fujioka H, Tung YC, Futai N, Paine R III, Grotberg JB, Takayama S: Acoustically detectable cellular-level lung injury induced by fluid mechanical stresses in microfluidic airway systems. *Proc Natl Acad Sci U S A* 2007; 104:18886–91
217. Hussein O, Walters B, Stroetz R, Valencia P, McCall D, Hubmayr RD: Biophysical determinants of alveolar epithelial plasma membrane wounding associated with mechanical ventilation. *Am J Physiol Lung Cell Mol Physiol* 2013; 305:L478–84
218. Yalcin HC, Perry SF, Ghadiali SN: Influence of airway diameter and cell confluence on epithelial cell injury in an *in vitro* model of airway reopening. *J Appl Physiol* (1985) 2007; 103:1796–807

219. Chen ZL, Song YL, Hu ZY, Zhang S, Chen YZ: An estimation of mechanical stress on alveolar walls during repetitive alveolar reopening and closure. *J Appl Physiol* (1985) 2015; 119:190–201
220. Jacob AM, Gaver DP III: Atelectrauma disrupts pulmonary epithelial barrier integrity and alters the distribution of tight junction proteins ZO-1 and claudin 4. *J Appl Physiol* (1985) 2012; 113:1377–87
221. Yalcin HC, Hallow KM, Wang J, Wei MT, Ou-Yang HD, Ghadiali SN: Influence of cytoskeletal structure and mechanics on epithelial cell injury during cyclic airway reopening. *Am J Physiol Lung Cell Mol Physiol* 2009; 297:L881–91
222. Higuaita-Castro N, Mihai C, Hansford DJ, Ghadiali SN: Influence of airway wall compliance on epithelial cell injury and adhesion during interfacial flows. *J Appl Physiol* (1985) 2014; 117:1231–42
223. Song JW, Paek J, Park KT, Seo J, Huh D: A bioinspired microfluidic model of liquid plug-induced mechanical airway injury. *Biomicrofluidics* 2018; 12:042211
224. Kay SS, Bilek AM, Dee KC, Gaver DP III: Pressure gradient, not exposure duration, determines the extent of epithelial cell damage in a model of pulmonary airway reopening. *J Appl Physiol* (1985) 2004; 97:269–76
225. Muradoglu M, Romanò F, Fujioka H, Grotberg JB: Effects of surfactant on propagation and rupture of a liquid plug in a tube. *J Fluid Mech* 2019; 872:407–37
226. Engle WA; American Academy of Pediatrics Committee on Fetus and Newborn: Surfactant-replacement therapy for respiratory distress in the preterm and term neonate. *Pediatrics* 2008; 121:419–32
227. Filoche M, Tai CF, Grotberg JB: Three-dimensional model of surfactant replacement therapy. *Proc Natl Acad Sci U S A* 2015; 112:9287–92
228. Denny E, Schroter RC: A model of non-uniform lung parenchyma distortion. *J Biomech* 2006; 39:652–63
229. Makiyama AM, Gibson LJ, Harris RS, Venegas JG: Stress concentration around an atelectatic region: A finite element model. *Respir Physiol Neurobiol* 2014; 201:101–10
230. Wu Y, Kharge AB, Perlman CE: Lung ventilation injures areas with discrete alveolar flooding, in a surface tension-dependent fashion. *J Appl Physiol* (1985) 2014; 117:788–96
231. Retamal J, Bergamini BC, Carvalho AR, Bozza FA, Borzone G, Borges JB, Larsson A, Hedenstierna G, Bugeo G, Bruhn A: Non-lobar atelectasis generates inflammation and structural alveolar injury in the surrounding healthy tissue during mechanical ventilation. *Crit Care* 2014; 18:505
232. Albert K, Krischer JM, Pfaffenroth A, Wilde S, Lopez-Rodriguez E, Braun A, Smith BJ, Knudsen L: Hidden microatelectases increase vulnerability to ventilation-induced lung injury. *Front Physiol* 2020; 11:530485
233. Cressoni M, Chiumello D, Chiurazzi C, Brioni M, Algieri I, Gotti M, Nikolla K, Massari D, Cammaroto A, Colombo A, Cadringer P, Carlesso E, Benti R, Casati R, Zito F, Gattinoni L: Lung inhomogeneities, inflation and [¹⁸F]2-fluoro-2-deoxy-D-glucose uptake rate in acute respiratory distress syndrome. *Eur Respir J* 2016; 47:233–42
234. Cereda M, Emami K, Xin Y, Kadlecsek S, Kuzma NN, Mongkolwisetwara P, Profka H, Pickup S, Ishii M, Kavanagh BP, Deutschman CS, Rizi RR: Imaging the interaction of atelectasis and overdistension in surfactant-depleted lungs. *Crit Care Med* 2013; 41:527–35
235. Beda A, Carvalho AR, Carvalho NC, Hammermüller S, Amato MB, Muders T, Gittel C, Noreikat K, Wrigge H, Reske AW: Mapping regional differences of local pressure–volume curves with electrical impedance tomography. *Crit Care Med* 2017; 45:679–86
236. Paula LF, Wellman TJ, Winkler T, Spieth PM, Güldner A, Venegas JG, Gama de Abreu M, Carvalho AR, Vidal Melo MF: Regional tidal lung strain in mechanically ventilated normal lungs. *J Appl Physiol* (1985) 2016; 121:1335–47
237. Güldner A, Braune A, Ball L, Silva PL, Samary C, Insors A, Huhle R, Rentzsch I, Becker C, Oehme L, Andreeff M, Vidal Melo MF, Winkler T, Pelosi P, Rocco PR, Kotzerke J, Gama de Abreu M: Comparative effects of volutrauma and atelectrauma on lung inflammation in experimental acute respiratory distress syndrome. *Crit Care Med* 2016; 44:e854–65
238. Tsuchida S, Engelberts D, Peltekova V, Hopkins N, Frndova H, Babyn P, McKerlie C, Post M, McLoughlin P, Kavanagh BP: Atelectasis causes alveolar injury in nonatelectatic lung regions. *Am J Respir Crit Care Med* 2006; 174:279–89
239. Bellani G, Guerra L, Musch G, Zanella A, Patroniti N, Mauri T, Messa C, Pesenti A: Lung regional metabolic activity and gas volume changes induced by tidal ventilation in patients with acute lung injury. *Am J Respir Crit Care Med* 2011; 183:1193–9